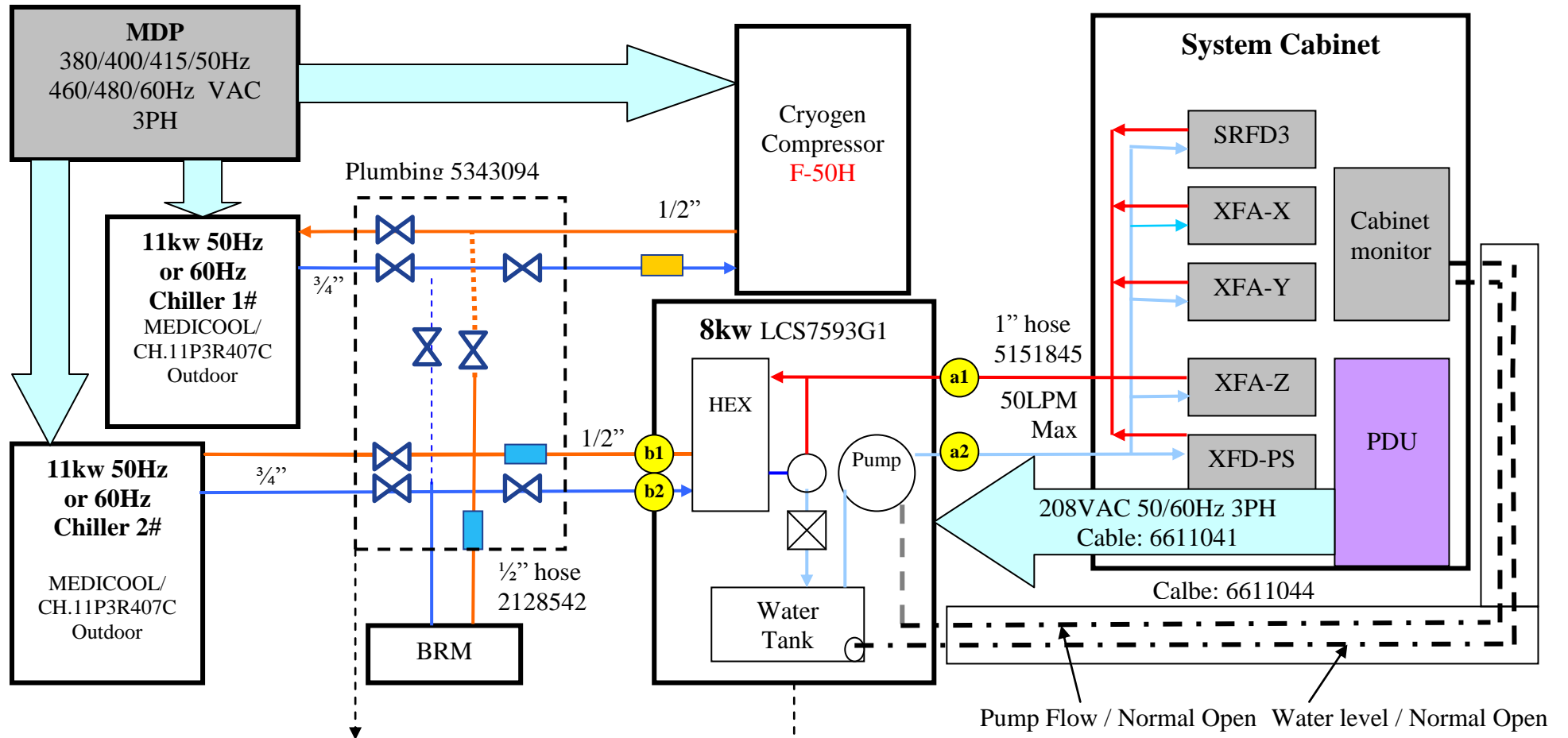
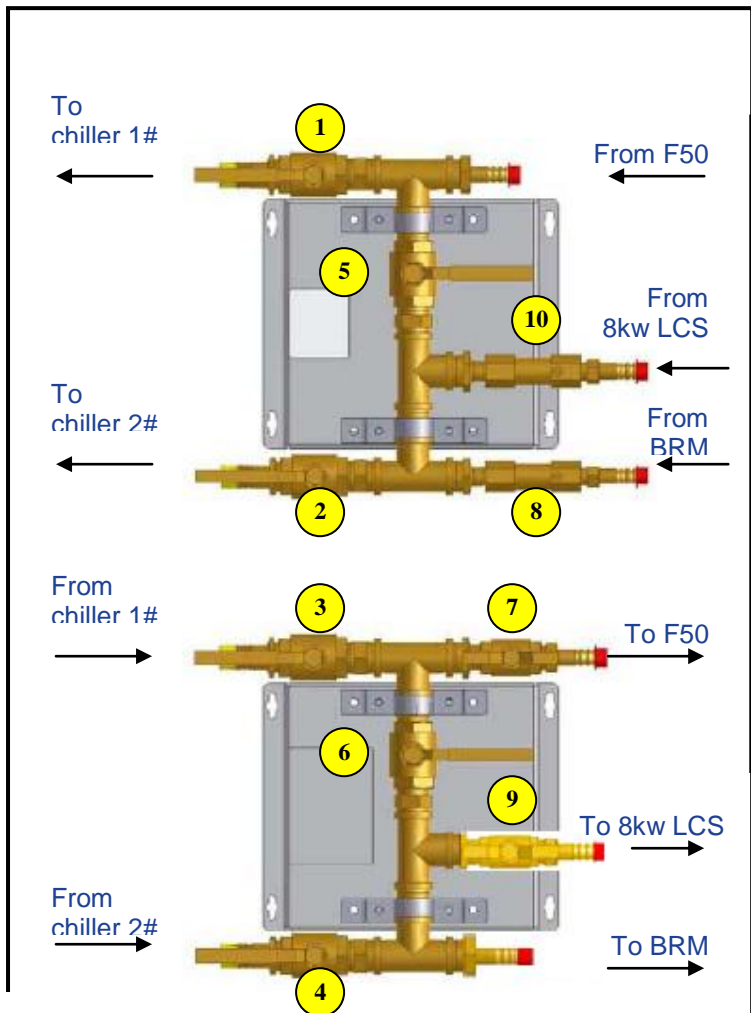


# Cooling Type A: Without Facility Water & NER- 400V

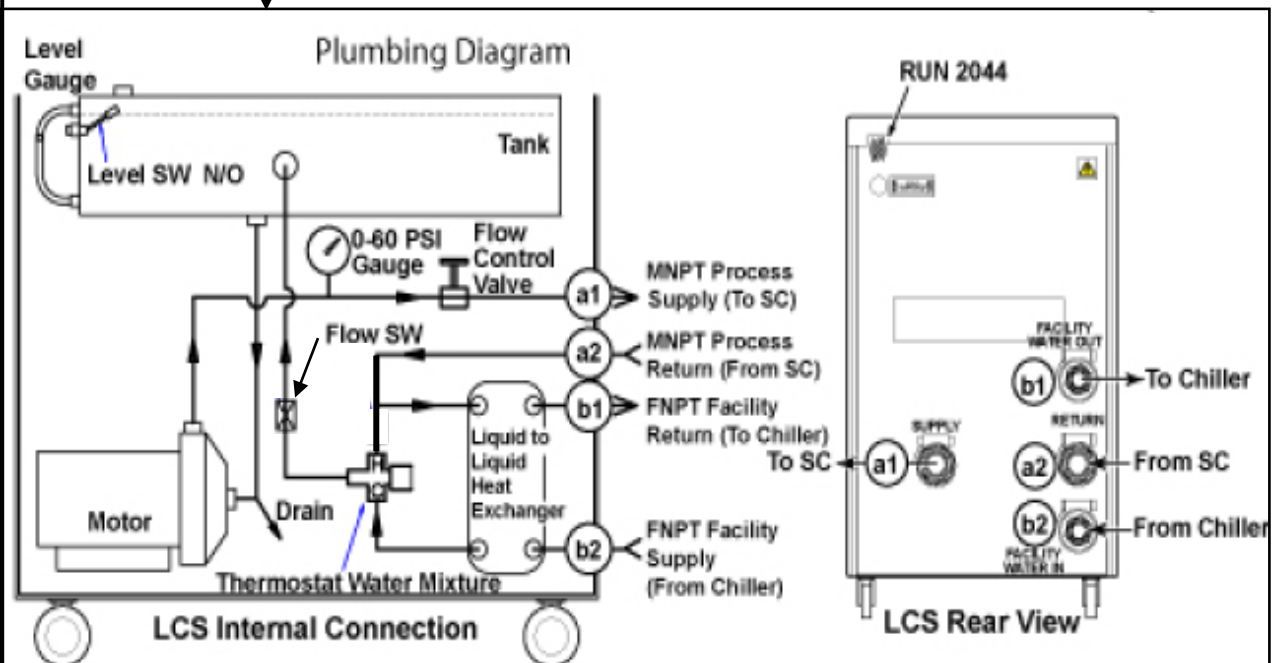
Illustration 1



Pump Flow / Normal Open    Water level / Normal Open



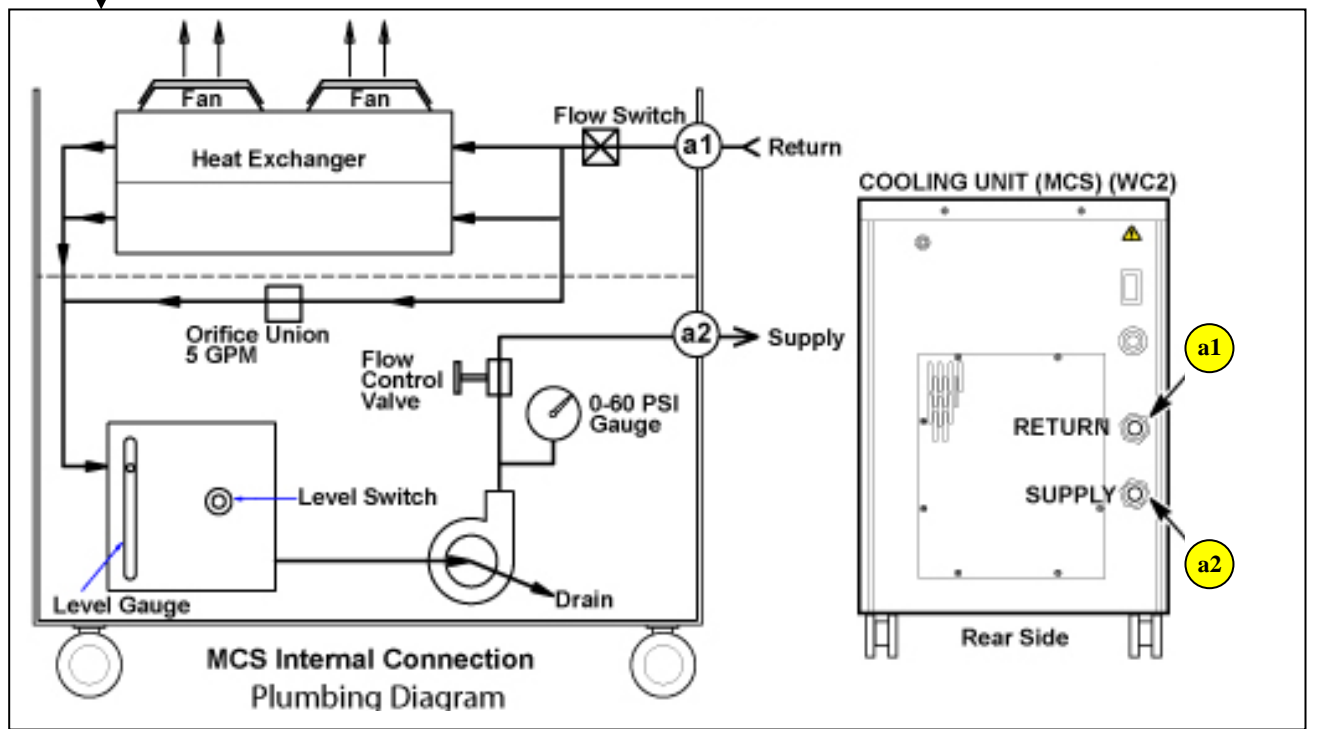
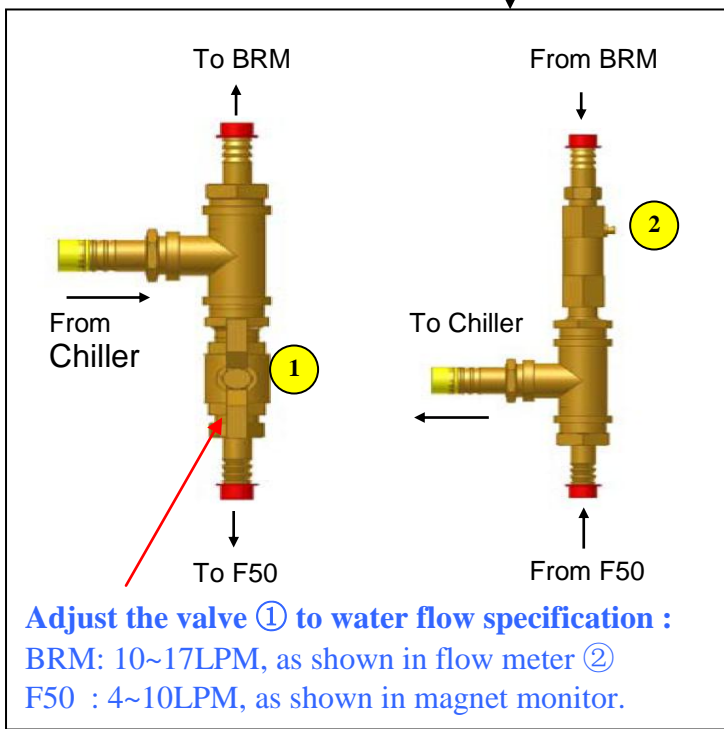
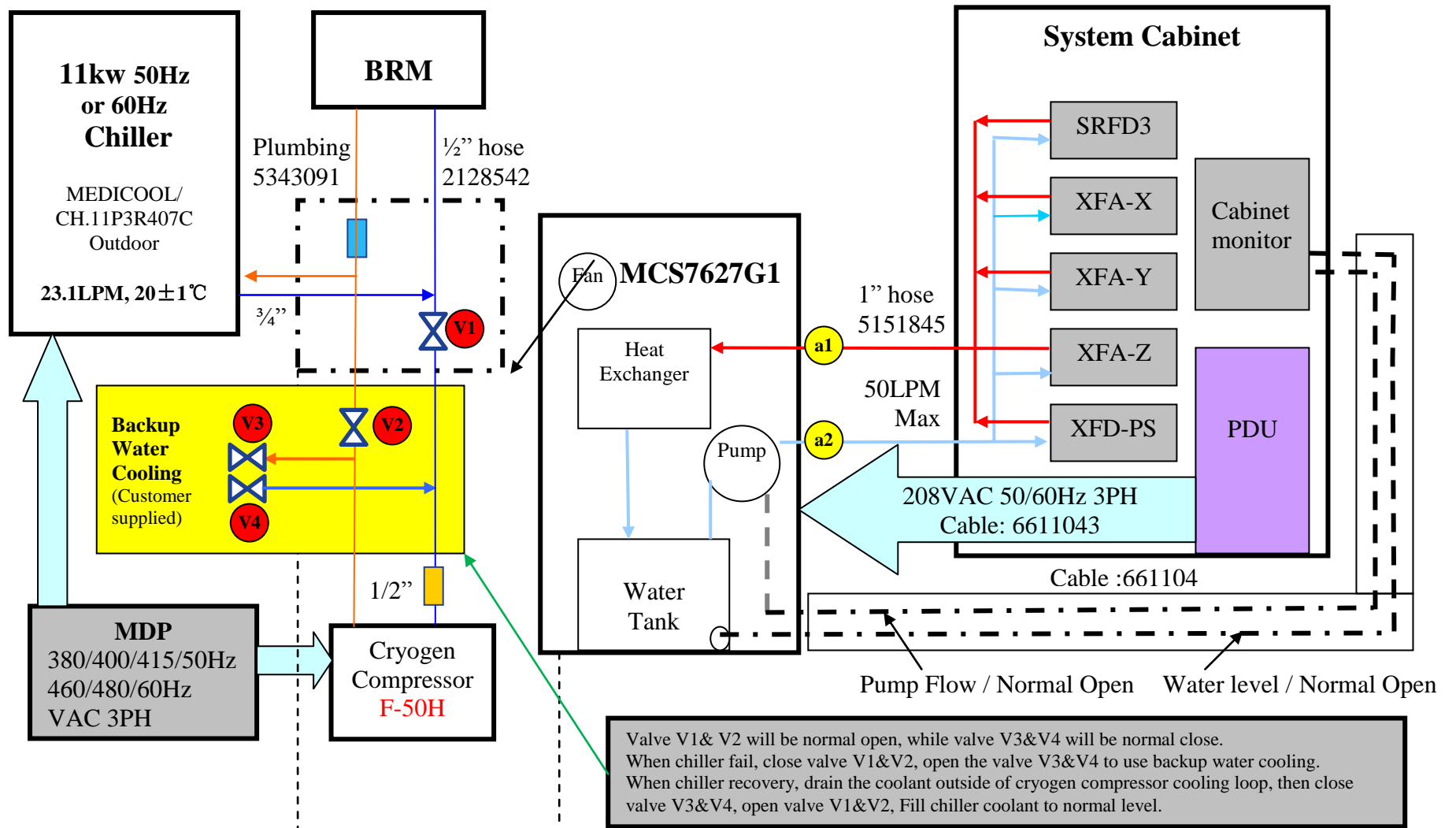
1. Make sure valves ①②③④⑦⑨ are full open, as shown in above.
2. Make sure valves ⑤⑥ are full close, as shown in above.
3. Adjust the valve ⑦ to water flow specification:  
F50 : 4~10LPM, as shown in magnet monitor.
4. Adjust the valve ⑨ to water flow specification:  
BRM: 10~17LPM, as shown in flow meter ⑧.  
8kw LCS: >=10LPM, as shown in flow meter ⑩





# Cooling Type C: Without Facility Water & with Equipment Room – 400V

Illustration 3





# Cooling Type E - With Equipment Room – EMEA

Illustration 5

