

**GE Hangwei Medical Systems  
Modular Cooling System  
User Manual**

**GE Part # 5344803  
Lytron Part # MCS7627G1**



**Lytron, Inc., 55 Dragon Court, Woburn, MA 01801-1039  
Tel: +1-781-933-7300 Fax: +1-781-935-4529  
[www.Lytron.com](http://www.Lytron.com)**

**Manual# 820-0294, Rev. F**

[THIS PAGE IS LEFT BLANK INTENTIONALLY]

## Revision History

REV	ECN / DATE	REASON FOR CHANGE	ORIGINATOR
A	10/23/03	Initial release	
B	ECN# 12929 / 01/20/05	Update manual to include spare parts and repair procedures.	HB
C	ECN# 17258 / 06/21/10	Add additional PM requirements for heat exchanger	MG
D	ECN# 18030 4/22/13	Add Heat Exchanger Obstruction to Troubleshooting Guide and attach 815-0011 to end of manual.	HB
E	ECN 18452 4/23/13	Corrected model number typo on warranty page, replaced Cooling system service policy with latest revision,	HB
F	ECN 18453 4/24/13	Customer requested change & Corrected typo found in index	HB

# Table of Contents

Revision History .....	3
Introduction .....	3
Safety Precautions .....	3
Labels and Silkscreen Marking.....	3
General Information.....	3
Cooling System Description.....	3
Installation and Operational Instructions.....	3
System Maintenance Service .....	3
Trouble Shooting Guide.....	3
Replacement Parts .....	3
Appendix A - Plumbing Diagram .....	3
Appendix B - Electrical Schematic .....	3
Lytron MCS7627G1 Standard Warranty .....	3
Form F7.02.18 Rev G Effective September 6, 2011 .....	3

Figure 1: Cooling Loop	8
Figure 2: Front Panel, Indicator Light, Top Panel	16
Figure 3: Casters, Pressure Gauge, & Pump	16
Figure 4: Level Switch & Heat Exchangers	16
Figure 5: Flow Switch & Flow Control Valve	17

Attachment Technical Service Bulletin # 815-0011

# Introduction

## Receiving your New Modular Cooling System

Inspect your new MCS immediately upon receiving it. If the unit shows shipping damage, contact the transportation company and file a freight damage claim. Retain all cartons and packing material until the unit is operated and found to be in good condition. Your MCS has been fully tested at the Lytron factory with clean water. Although the system has been drained, some residual fluid may remain. This will not hinder the performance of the MCS.

## About the Warranty

All units returned for warranty claims must have an RMA (Return Material Authorization) number on the outside of the container. Call Lytron Customer Service at +1-781-933-7300 for an RMA number. Refer to the end of manual for the MCS warranty. Units should be drained of all fluids and packaged in its original packaging.

## Customer Service Support

Lytron is committed to servicing the customer, both during and after the sale. If you have any questions concerning the operation of your unit, contact our Application Engineering Department at +1-781-933-7300. To facilitate your call, please have the model number and serial number of the unit (located on the rear of the unit) for the Lytron Applications Engineer.

## Service Hotline

Lytron has a 24-hour per day, 7 day per week service hotline to help you with questions on the startup and operation of your MCS. **(We recommend you review the trouble shooting guide) before calling our service hotline.** Lytron USA service can be reached by dialing +1-781-933-7300 . To facilitate your call please have the model number and serial number (located on rear of the unit) of the unit for the Lytron Service Technician.

## Safety Precautions

This system is designed to provide fluid cooling only as specified in this manual. If you use this system in a manner other than as specified, the safety protection of the system may be impaired.

Warnings are posted throughout the manual. Read and follow these important instructions. Failure to observe these instructions or use the MCS other than as specified may impair safety protection, void the warranty, and can result in permanent damage to the unit, significant property damage, personal injury and/or death.

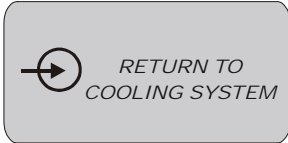
Make sure you read, understand, and follow all instructions and safety precautions listed in this manual before operating your unit. If you have any questions concerning the operation of your unit or the information in this manual, please contact our Applications Engineering Department at +1-781-933-7300

1. Do not operate the unit without fluid in the reservoir.
2. Never place the unit in a location where excessive heat, moisture, or corrosive materials are present.
3. The unit must be plugged into a properly grounded power source.
4. Do not connect the Coolant In or Coolant Out to your building water supply or any pressurized source.
5. Do not use or maintain the unit outdoors. These units were not designed to withstand outdoor weather conditions.
6. Performance of installation, operation or maintenance procedures other than those described in this manual may result in a hazardous situation and may void the Lytron warranty.
7. Transport the unit with care. Sudden jolts or drops can damage the unit.
8. Observe all warning labels. Never remove warning labels.
9. Do not operate damaged or leaking equipment.
10. Always turn the unit "OFF" and disconnect the power cord from the power source before performing any service, maintenance procedures or before moving the unit. When the system is energized the green indicator light on the front panel will be illuminated.
11. Do not operate equipment with damaged power cords.
12. A qualified technician should perform service and repairs.

## Labels and Silkscreen Marking



- This label tells maintenance personnel and users to consult the technical manual for more information.



- Identifies the port where heated fluid returning from the customer's machine is connected.



- Identifies the connection where chilled fluid is supplied to the user's machine.



- Positive earth (ground) terminal.

**LYTRON**  
*Total Thermal Solutions*  
Woburn MA, 01801, USA

01/23/12

For Service and Support World Wide  
Call: +1- 781-933-7300 or E-mail [service@Lytron.com](mailto:service@Lytron.com)  
[www.Lytron.com](http://www.Lytron.com)

<b>MODEL NO.</b>	<b>SERIAL NO.</b>		
<b>MCS7627G1</b>	<b>XXXXXXXXXX</b>		
<b>VOLTS</b>	<b>HZ</b>	<b>PHASE</b>	<b>AMPS</b>
<b>208V~</b>	<b>60</b>	<b>3</b>	<b>6.4</b>
<b>208V~</b>	<b>50</b>	<b>3</b>	<b>6.9</b>

<b>PUMP TYPE</b>	<b>GE PN &amp; REV</b>
<b>CENTRIFUGAL</b>	<b>5344803 REV</b>

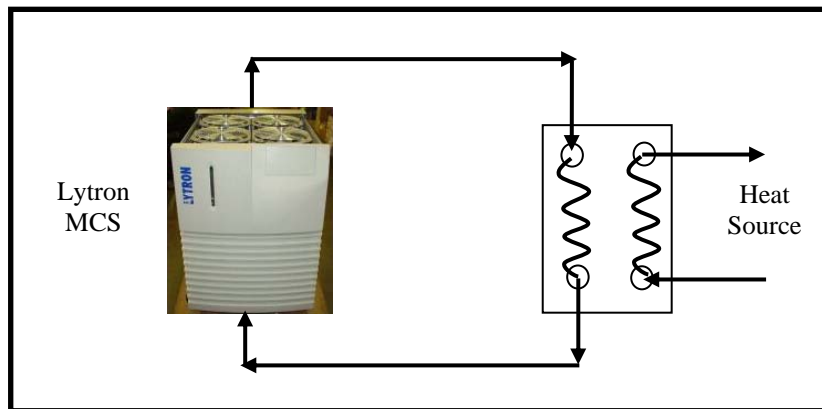
- The Product ID Label identifies the model number, serial number, electrical information, pump type, GE P/N and Revision.

## General Information

Product Specifications		
Cooling Capacity	Watts	6,000
	Btu/Hr	20,500
Case Dimensions	Width	22" (559mm)
	Depth	28" (711mm)
	Height	32" (813mm)
Fluid Connections	Inlet (Barb)	1"
	Outlet (Barb)	1"
Reservoir Capacity	Gallons (liters)	5.2 (20.0)
Electrical Requirements	Volts, frequency	208 VAC, 3 phase, 50/60 Hz

## Cooling System Description

The MCS7627G1 is a liquid-to-air type cooling system designed to pump ambient temperature liquid from the MCS's reservoir tank through the end user's heat source, through the MCS's radiator, and back to the reservoir tank (see Appendix A for internal plumbing schematic). The external plumbing and the heat source are provided by the end. A typical cooling loop can be seen in Figure 1.



**Figure 1: Cooling Loop**

# Installation and Operational Instructions

This system is designed to provide fluid cooling only as specified in this manual. If used in manner other than as specified, the safety protection of the system may be impaired. Warnings are posted throughout the manual. Read and follow these important instructions. Failure to observe these instructions or use other than specified may impair safety protection and can result in permanent damage to the unit, significant property damage, or personal injury or death. Make sure you read and understand all instructions and safety precautions listed in this manual before operating your unit.

## STEP 1: REMOVE FROM SHIPPING CONTAINER

Using the finger-grips on each side of the system cover, lift the MCS Cooling System straight up and out of the shipping container. Remove any protective Styrofoam or cardboard.

## STEP 2: COOLANT LINE INSTALLATION

Length of runs should be as short as possible to reduce pressure drop losses. Lines are best run at or near the same level as the cooling system, until reaching the equipment to be cooled.

Both supply and return lines (which deliver coolant to and from the equipment being cooled) should be nominally 1" ID hose. The COOLANT OUT and COOLANT IN ports are both located on the back of the MCS.

## STEP 3: COOLING AIRFLOW INSTRUCTIONS

Avoid potential airflow obstructions to the MCS Cooling System. Make sure that there are no obstructions to air flow from under the enclosure openings for at least 6 inches along both sides, back and front of the unit. At least 4 feet above unit should be unobstructed.

## STEP 4: INITIAL FILLING OF RESERVOIR

Fill the reservoir with coolant to the FULL mark on the label on the front of the reservoir. The label can be seen by removing the lower front panel of the system.

## STEP 5: CONNECTING ELECTRICAL POWER

Refer to the General Requirements section and to the product ID label on the rear of the LCS for the specific electrical requirements of your unit. To safely operate the MCS, use an SJT cord set and connectors that are compatible with the local power grid and the power requirements. The MCS should use SJT 3 conductor 12 AWG minimum power cord. Connect power cord from power source and proper ground to incoming power terminal block per Appendix B. Once energized, the green indicator light on the front panel of the system will illuminate.

### **Notes:**

1. Neutral should not be connected directly to ground.
2. It is recommended that a main power switch be installed to control 3-phase main power.



### **NOTICE: IF PUMP AND FAN MOTORS START, IMMEDIATELY DISCONNECT POWER**

Recheck to make sure the power has not yet been energized. **RUNNING THE SYSTEM DRY FOR EVEN A SHORT TIME WILL DAMAGE THE PUMP.** Now repeat the previous step until the power plug has been connected, without either the pump or fan motor running.

## **STEP 6: PRIMING PUMP**

It is now safe to apply power and to quickly "jog" the pump "ON-and-OFF". The fan will also turn "on-and-off" simultaneously. This is normal. We are now "priming" the pump. Continue to do this several times, while watching the coolant level indicator on the front panel until the coolant level in the reservoir has dropped down to the ADD mark on the front panel. Now turn off the system.

## **STEP 7: TOP OFF SYSTEM**

Again add water to the reservoir to the FULL mark on the front panel.

Now repeat this "jogging" and refilling process until the system is totally full and coolant begins to return back into the reservoir. This will be confirmed when the decrease in coolant level begins to slow down. The coolant level will eventually become stable when all the liquid passages have become full, and as much coolant is being pumped out of the reservoir as is being returned to it.

The reason for the slow filling procedure is to slowly push the air out of the passages, back into the reservoir and out the filler opening. The slower the better, so that air won't become "entrained", recirculating with the coolant and causing it to become "frothy".

## **STEP 8: "DRAIN-DOWN"**

After the level has become stable (while still continuously jogging on and off), turn the pump off and observe the coolant level. If the level remains the same, all is well. However, if the level slowly begins to rise, it means coolant at a higher level is draining back down into the reservoir.

In this event, turn the pump back on again to return the tank to a steady level. Raise the MCS to a higher position, to see if this will temporarily correct the problem.

This "drain-down" problem can be permanently corrected by (1) either installing a shutoff valve in the return line (either manual or automatic); or (2) by using a non-vented cap on the reservoir (during shutdown only).

## **STEP 9: "ON-LINE"**

Your MCS Cooling System is now ready for full-time use.

It has been designed for reliable service on a CONTINUOUS OPERATIONAL DUTY CYCLE.

# System Maintenance Service

## (A) Scheduled Maintenance

Routine system maintenance should be very minimal once the MCS Cooling System has been initially installed, filled, primed and is up and running. Maintenance instructions for changing and maintaining coolant level not covered in the installation and operating instructions will be covered here under **SYSTEM MAINTENANCE**.

Operating experience with each unique equipment installation will dictate reasonable frequency of system inspections and/or scheduled maintenance. Suggested guidelines are presented under the following Sections (B), (C) and (E).

## (B) Weekly Inspections

**Noise Level:** Any abnormal sound or substantial increase in noise level since the last weekly inspection may indicate an impending pump, fan or line blockage problem, which should be further investigated.

**Leakage:** The weekly visual check does not require removal of the top cover. However, observation of coolant on the floor surface, coming out from under the system, calls for a further check for possible new leaks.

**Coolant Level:** Any significant drop in the coolant level on the front panel since the previous weekly check should be investigated further. If there is no visual system leak, then the loss may be due to leakage elsewhere in the equipment. See Section (D) for instructions on "topping up" the reservoir.

**Pump and Fan Assemblies:** With upwards of 10,000 hours continuous duty life expectancy on the pump and 20,000 hours on the fan, both of these components should check OK, on a week-after-week basis.

**Heat Exchanger:** The fins of the heat exchanger(s) provide the surface area for heat transfer to occur. Dust buildup will inhibit adequate heat transfer, so removal of dust from the fin area will help maintain efficiency of the system. Use a fine haired brush or vacuum to remove any dust from the heat exchanger. This should be done on a monthly basis.

**Coolant Temperature:** With no temperature monitor in the system, checking each week by placing a hand on top of the cover, will determine if relative operating temperature level is consistently the same as the week before (normal temp level checks OK). Any substantial increase in temperature level should be further investigated (i.e., airflow obstruction, filter blockage).

## (C) Coolant Life

**Periodically inspect** the coolant inside the reservoir. If the coolant appears dirty, flush the reservoir and replace coolant.

## (D) Maintaining Coolant Level

If any of the previous observations require coolant level to be brought back up to normal, procedure is as follows:

- Remove top cover and right panel (from front of system); remove cap from reservoir.
- Add coolant into the reservoir, up to the FULL mark on the front panel.

## (E) Changing Coolant

**Disconnect Main Power:** Disconnect main power to assure there is no live voltage on the unit while changing coolant. The green indicator light located on the front panel should NOT be illuminated.

**Remove System Cover:** Remove top cover and side panels.

**Drain Coolant from System:** The system is best drained using a wet-vac. First vacuum all of the water out of the tank. Once the tank has been emptied, disconnect the supply and return lines one at a time and using the wet-vac to vacuum water out of the lines.

**Reconnect Hoses:** Reconnect system coolant supply and return hoses, making sure the hose clamps are on tight. Also check any other equipment lines that may have been disconnected for draining.

**Reconnect Power Plug:** Plug should be reapplied with electrical power to the plug OFF. Once energized, the green indicator light on the front panel of the system will illuminate.



**CAUTION:** PUMP WILL BE DAMAGED IF RUN DRY. If pump starts, quickly check to make sure system power to the unit is OFF (fan not running), before proceeding. Also check level switch for "hang-up."

**Coolant Refill:** Now perform Steps 4, 6 & 7 of the previous Installation and Operational Instructions for initial refilling procedure.

**Restart Cooling System:** After the coolant level has become stable for several minutes and has been topped off again to the FULL mark, the system can now be turned on again to full operation.

**Replace System Cover:** Before replacing the system covers, carefully recheck a final time for any new leaks.

Reposition system cover and side panels previously removed.

## (F) Operating Conditions

Temperature Range: 60-80°F (15.6-26.7°C), ≤80% RH non-condensing.

Location: Building interior only, machinery or storage room.

## (G) Storage Conditions (Dry)

Temperature Range: 5-40°C, ≤90% RH non-condensing.

Location: Building interior only, machinery or storage room.

## (H) Special Shipping Instructions

Shipping conditions **are not** a controlled environment; temperatures during winter months may well be much lower than the operation and storage conditions as specified. To prevent freeze-up during shipment, the following observations and special instructions should be noted.

**From the Factory**: The MCS cooling system is shipped dry from the factory.

**After Initial Filling**: For any subsequent shipments anytime after the unit has once been filled for operations, the following applies:

- Drain the Cooling System using normal draining procedures found in Maintenance Section (E). The system reservoir will be drained empty during this procedure.



**CAUTION: THE UNIT MUST BE COMPLETELY DRAINED AND DRY TO PREVENT FREEZING DURING LOW TEMPERATURE SHIPPING.**

## Trouble Shooting Guide

Problem	Possible Cause	Recommended Remedy
<b>Unit does not start or shuts off shortly after starting.</b>	No power to the unit	Make sure the unit is plugged in. Verify power to the unit by checking if green indicator light is illuminated.
	Low Voltage.	Have a qualified electrician check the electrical service to the unit.  Check the voltage on the power source. Make sure it is within the rated voltage of the unit $\pm$ 10%.
	Power is supplied to system out of phase.	Check phase monitoring relay to see if red light is illuminated. If so, reverse two of the three incoming power lines and recheck phase monitoring relay to ensure red light is no longer illuminated.
<b>Fans are noisy</b>	Dust in fan	Shut down unit. Remove obstruction.
<b>Noisy Pump Motor</b>	Pump shaft seal damage	Replace pump.
	Excessive pressure drop	Use either larger hoses or a shorter line length to reduce the pressure drop to equipment to be cooled.
<b>Pump motor overheats</b>	Improper voltage to the system.	Verify and correct the voltage to the unit.
	Obstruction in pump head.	Shut down unit, clear obstructions and restart unit.
<b>Low coolant flow</b>	Low coolant level or no coolant in the reservoir.	Check for leaks. Repair any leaks and fill reservoir.
	Restriction in coolant lines external to the unit.	Eliminate restrictions in the lines. Open any valves.
	Pump overload has tripped.	Turn unit off. Wait for overload to cool. It will reset on its own in 30 minutes or less.
	Leaks in external piping.	Repair leaks.
<b>Supply pressure is too high</b>	Pressure drop through system is too large.	Reduce line length or increase line diameter.
	Gate valve is not open enough.	Adjust gate valve until desired pressure is achieved.
<b>Diminished system performance</b>	Fan obstruction	Remove obstruction. Ref. Step 3 in Installation Instructions.
	All 4 fans are not operating.	Replace faulty fan.
	Pump is not delivering adequate flow. To check the pump's performance, close the flow control valve on the pump discharge port and verify that the pressure gauge reads a minimum of 53 psig for 60 Hz or 36 psig for 50 Hz.	Replace pump.
	Heat Exchanger obstruction	Reference Technical Service Bulletin# 815-0011 at end of manual.

**Service Assistance** If, after following these trouble shooting steps, your unit fails to operate properly, contact Lytron for assistance.

## Replacement Parts

Available replacement parts are as follows:

ITEM #	PART DESCRIPTION	LYTRON P/N
1	Front Panel, lower	340-0017
2	Energized Indicator Light	230-1303
3	Top Cover	330-1848
4	Caster w/brake	531-0017
5	Pressure Gauge 0-60 PSI	440-0199-01
6	Pump/Motor Unit	410-0453
7	Flow Switch, 5 GPM	230-1144
8	Valve – Flow Control	410-0281
9	Level Switch	230-0892
10	Heat Exchanger, Right (viewed from front)	6320G31-01
11	Heat Exchanger, Left (viewed from front)	6320G31-02
12	Fan	102105-01
13	Finger guard	102106
14	Relay DPDT 240V - P&B #T92P11A22-240	101903-04
15	Circuit Breaker 5A, 1 Pole - Schurter# T11-311-5	230-1149
16	Motor Starter – Fuji # BM3RSB-6P3	230-1139
17	Relay, Reverse phase, 208/240V SPDT - IAS# PLS240A	230-1142

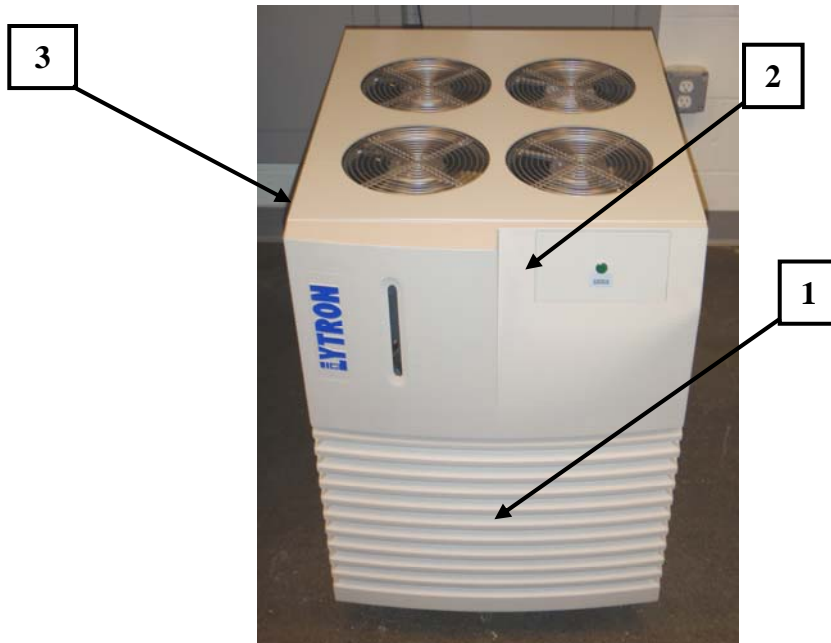


Figure 2: Front Panel, Indicator Light, Top Panel

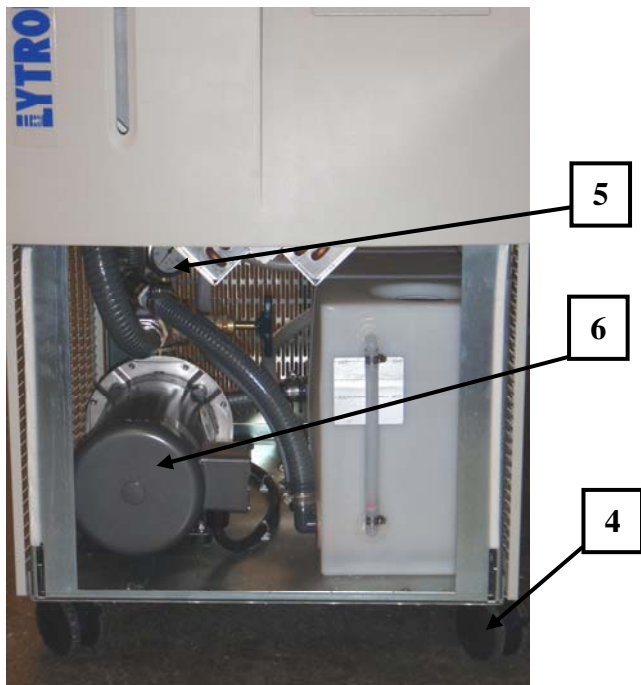


Figure 3: Casters, Pressure Gauge, & Pump

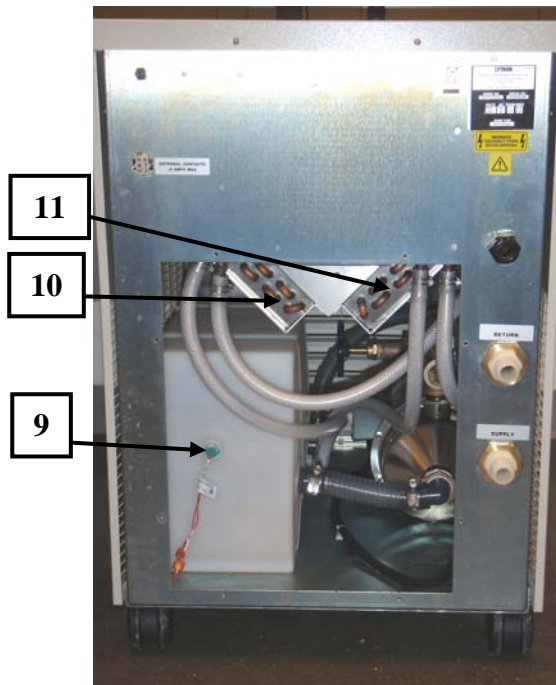


Figure 4: Level Switch & Heat Exchangers

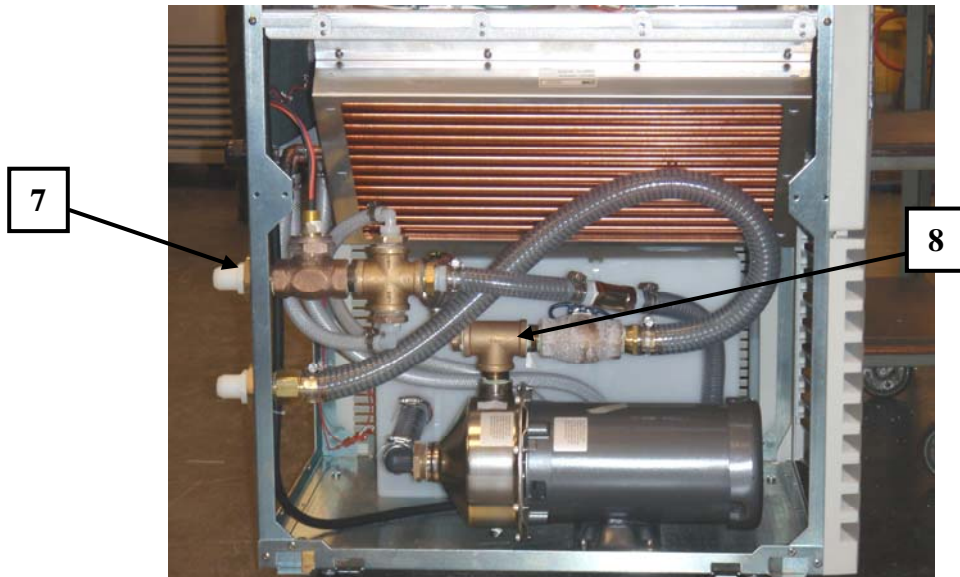


Figure 5: Flow Switch & Flow Control Valve

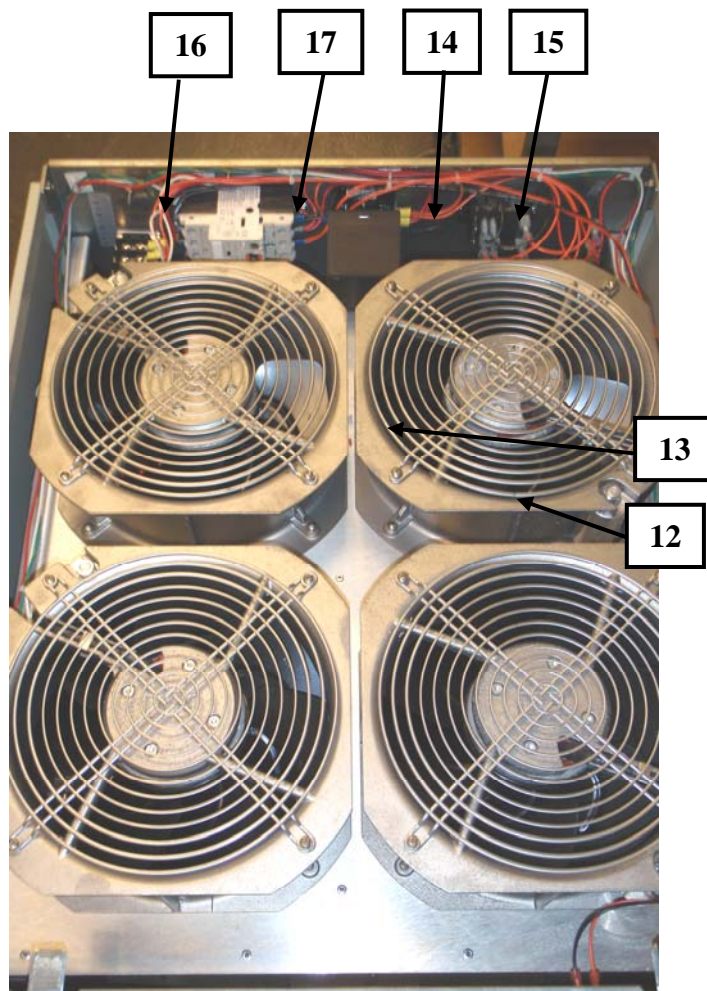
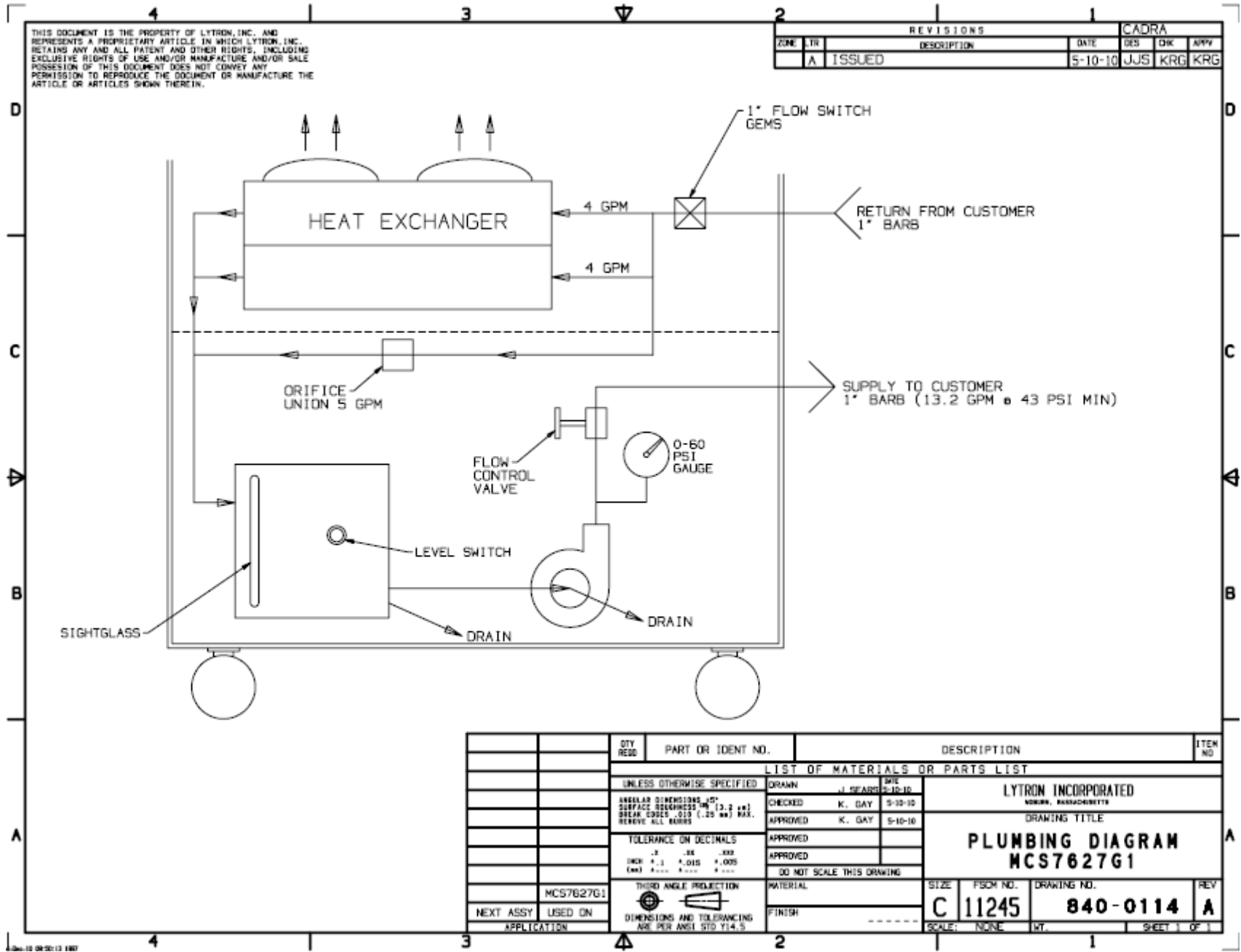
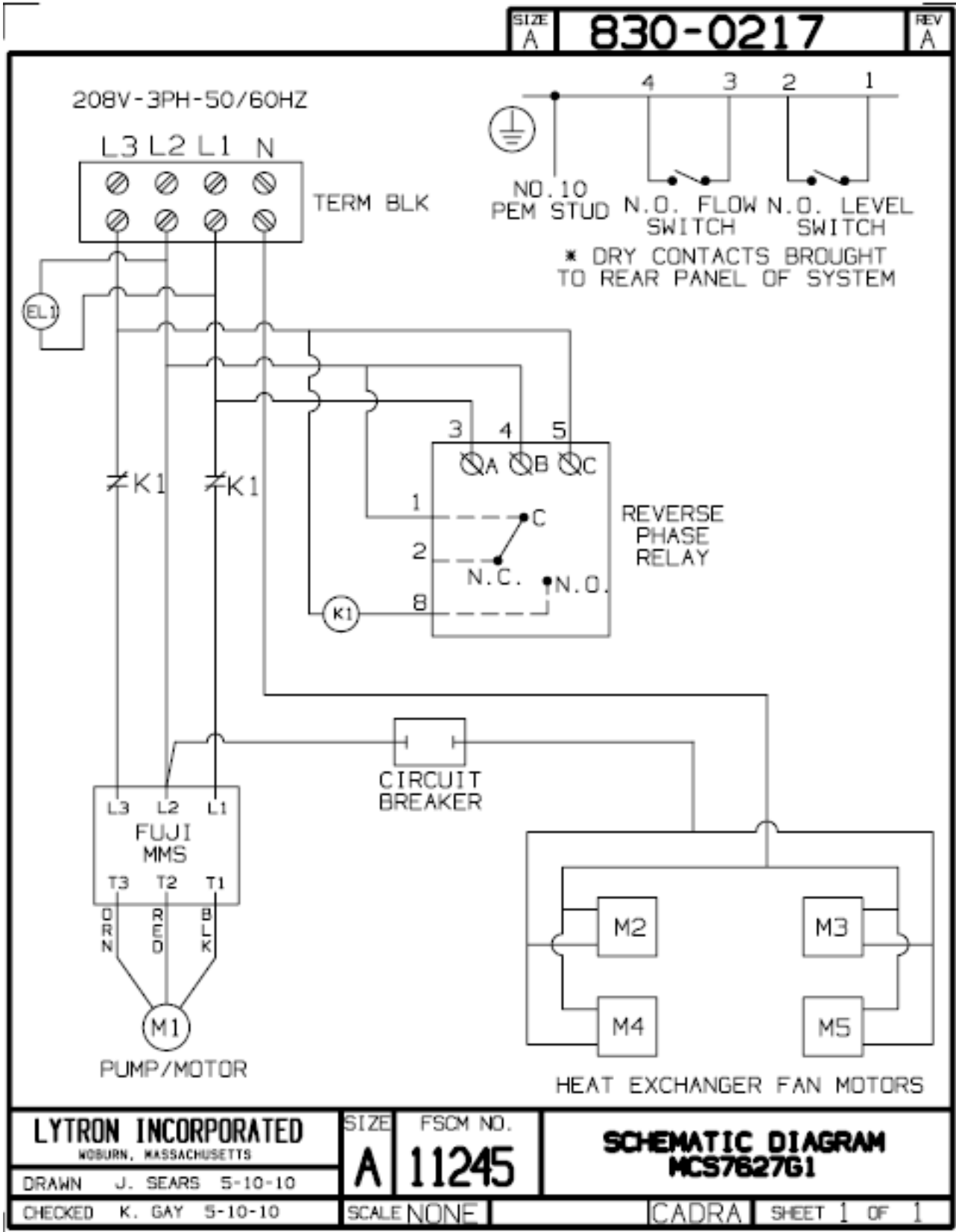


Figure 5: Fans, Finger Guard, Relay, Circuit Breaker, Motor Starter, & Phase Reverse

# Appendix A - Plumbing Diagram



# Appendix B - Electrical Schematic



## Lytron Cooling Systems Service Policy

**Lytron's cooling systems are the product of over 50 years of thermal engineering and manufacturing experience. We designed them to provide superior reliability, easy maintenance, and worry-free operation. However, occasionally a system may need repair. To ensure your process is back up and running quickly, Lytron has implemented the following cooling system service policy.**

### **Lytron's Standard Warranty**

Lytron's warranty is set forth at the end of the cooling system manual sent with each product.

### **Diagnostic Consultation:**

At no cost, Lytron will attempt to diagnose the problem over the phone. Our service department can be reached by calling 781-933-7305 and following the menu or contacting one of our regional [Service-Depots](#). Service technicians are available 24 hours/7 days for consultation. Lytron strongly encourages customers to take advantage of this service before returning a cooling system to Lytron for evaluation. Often a problem with a system can be fixed quickly in-house or it is determined that it is an application problem. By utilizing our service hotline, you can avoid the downtime and expense associated with returning the system to our factory. Phone diagnosis can be difficult and may actually be a trial and error process. Lytron will not assume any liability for misdiagnosis when diagnosing over the phone.

### **Warranty and Non-warranty Returns:**

To return a cooling system, a Lytron Return Material Authorization (RMA) number must be obtained from Lytron's service department which can be reached by calling 781-933-7300, or by completing the [Request-for-RMA](#) form and e-mailing it to [service@lytron.com](mailto:service@lytron.com). Prior to calling Lytron, the system part number, serial number, and a detailed description of the problem must be collected, as this information is required to assign an RMA number.

A credit card or, for existing customers, a purchase order, (PO), is also required for the evaluation and repair charges if Lytron determines the system is not defective as defined by the warranty (see below for more details). The amount suggested will cover the evaluation fee and most repair charges for non-warranty repairs.

The RMA number should be indicated on the outside packaging of the returned unit. Systems must be returned clean, dry, and free from chemicals to Lytron's factory, shipping costs prepaid. Lytron is not responsible for any damage incurred in the return shipment. Coolant disposal fees may apply for returned units. Please contact your service representative for details.

Debit memos should not be issued for any repair, either warranty nor non-warranty repairs.

Lytron ordinarily will evaluate the unit within 2 or 3 business days of receipt. Lytron will use reasonable effort to repair the unit promptly, in most cases within one week of receiving all of the required parts. Lytron's warranty covers repair of the unit but Lytron's warranty does not cover cosmetic issues. If upon examination Lytron determines the system has not failed as defined by the warranty, an evaluation fee will be charged. The evaluation fee will be charged regardless of

disposition (i.e.: scrap) and will be credited towards the total repair cost. Once the unit has been evaluated by our Service Group, all work will be quoted to the customer before proceeding with the repair. This quote will not cover the repair of cosmetic issues unless specifically requested to do so.

**Repair warranty:**

Lytron warranties the replacement parts and labor for 90 days from the repair date under the terms of our standard warranty or the balance of the original warranty, whichever is longer.

**Return Shipments:**

Lytron's warranty covers payment for standard, ground return shipment of warranted repairs. The incremental price difference for expedited return shipments, if requested, are the responsibility of the customer. After non-warranty repair, Lytron will ship the system back using the customer's preferred shipping method.

**Field Service/Commissioning Charges**

Where available, Lytron can arrange field service for cooling system commissioning or repair. Under no circumstances does Lytron's warranty cover on-site service. All on-site service must be arranged through Lytron's service department. The charges for this service include an administrative fee, a charge for on-site services provided, any related travel charges, and parts not covered under warranty.

All requests for On-Site Services require a PO or credit card authorization before services will be scheduled.

When using Lytron-arranged, on-site service, Lytron warranties the replacement parts and repair labor for 90 days from the repair date under the terms of our standard warranty or for the balance of the original warranty, whichever is longer. If non-authorized labor repairs the system or installs replacement parts, Lytron does not warranty the parts or work and this action potentially voids any remaining warranty.

Lytron is expanding its worldwide service presence. Please contact the Service Department for the latest areas where on-site service is available.

**Replacement Parts:**

Replacement parts can be ordered using a credit card or purchase order. Parts being returned from systems under warranty should be returned using a Lytron issued RMA number. If the parts are found to be defective and the claim is within the warranty period, credit will be issued for the price of the parts and one-way ground shipping charges. If the parts are not defective or indicate end user damage, no credit will be issued. Lytron will not cover the incremental cost of air shipment of replacement parts, regardless of warranty status.

In-stock parts will normally ship the next business day; non-stocked parts will be shipped as quickly as reasonably possible.

**This policy is subject to change. Please check with Lytron's service department for the current policy.**

## **Lytron MCS7627G1 Standard Warranty**

Lytron agrees that the apparatus manufactured by it will be free from defects in materials and workmanship for the warranty period under normal use and service and when properly installed. The warranty period for Kodiak<sup>®</sup> recirculating chillers is two years from date of shipment of such apparatus to the original purchaser, maintenance items excluded, and one year from date of shipment of such apparatus to the original purchaser for all other products Lytron sells. Lytron's obligation under this agreement is limited solely to repair or replacement, at its option, at its factories, of any part or parts thereof, returned to Lytron with transportation charges prepaid, which examination shall disclose to Lytron's satisfaction to have been defective. THE FOREGOING EXPRESS WARRANTY IS IN LIEU OF ALL OTHER WARRANTIES, EXPRESSED OR IMPLIED, INCLUDING BUT NOT LIMITED TO WARRANTIES OF MERCHANTABILITY AND FITNESS FOR A PARTICULAR PURPOSE. LYTRON'S OBLIGATION UNDER THIS WARRANTY IS STRICTLY AND EXCLUSIVELY LIMITED TO THE REPAIR OR REPLACEMENT OF DEFECTIVE COMPONENT PARTS AND LYTRON DOES NOT ASSUME OR AUTHORIZE ANYONE TO ASSUME FOR IT ANY OTHER OBLIGATION. LYTRON ASSUMES NO RESPONSIBILITY FOR INCIDENTAL, CONSEQUENTIAL, OR OTHER DAMAGES INCLUDING, BUT NOT LIMITED TO LOSS OR DAMAGE TO PROPERTY, LOSS OF PROFITS OR REVENUE, LOSS OF THE UNIT, LOSS OF TIME, OR INCONVENIENCE. Lytron's liability does not include any labor charges for replacement of parts, adjustments, repairs, or any other work done outside its factories and its liability does not include any resulting damage to persons, property, equipment, goods or merchandise arising out of any defect in or failure of its apparatus. Lytron's obligation to repair or replace shall not apply to any apparatus which shall have been repaired or altered outside of its factory in any way, or which has been subject to negligence, to misuse, or to pressures in excess of stated limits. On parts not of Lytron's manufacture, such as motors, controls, etc., Lytron extends only those warranties given to Lytron, Inc. to the extent Lytron can do so. Lytron's agreement hereunder runs only to the immediate purchaser from Lytron, Inc. and does not extend, expressly or by implication, to any other person.

Form F7.02.18 Rev G Effective September 6, 2011

REV	DESCRIPTION	DRN	ENG	SERV	DATE
A	INITIAL RELEASE	HB	HB	HB	11/3/11

## MCS Heat Exchanger Cleaning Guide

**Description:** The heat exchanger ‘fins’ should be checked during normal planned maintenance and cleaned as required.

**Symptoms:** When used in an environment with dust and debris it is possible for the heat exchangers in the Modular Cooling System to become blocked with dust. This will lead to a reduction of airflow across the cooling fins thereby reducing the cooling capacity.

### Tools Required:

- Philips Screwdriver (#2)
- Small soft-bristle brush (2” or 5cm paint brush)
- Rag or towel
- Large sheet of paper or piece of cardboard to catch debris
- Dust pan or Vacuum



**WARNING:** Disconnect power before servicing the unit. Follow all Lock-out/Tag-out procedures.



**CAUTION:** The copper ‘fins’ of the heat exchanger are very sharp. Use care when working near the heat exchanger.

### Procedure:

1. Disconnect power from the MCS
2. Remove top and side covers to expose the heat exchanger.
3. Place rag or towel over tank cap.
4. Place sheet of paper over the tank and pump to protect them from debris. Figure 1.
5. Using soft bristle brush, gently sweep in the direction of the fin. Start sweeping from top and move toward bottom of heat exchanger. Figure 1.



Brush downward to prevent damage to fins

Place cardboard on top of tank and pump to collect debris.

**Figure 1: Heat Exchanger**

6. Repeat process on the second heat exchanger on opposite side of unit.
7. Remove cardboard (and debris) using caution to not spill debris on tank or motor.
8. Remove any debris that inadvertently fell into lower housing of unit.
9. Remove rag or towel used to cover the tank.
10. Ensure coolant level is full. Add coolant as required.
11. Install side and top covers.
12. Connect mains power to MCS unit.

End of procedure.