

TABLE OF CONTENTS

TABLE OF CONTENTS	1
1- IMPORTANT NOTICE.....	2
2- REPLACE CONTROL BOX	2
3- REPLACE POWER SUPPLY	3
4- REPLACE EXTENDER KIT.....	4
5- REPLACE TUBING / BULB	4
5-1 Replace Box to PAC Tubing.....	4
5-2 Replace Bulb to PAC Tubing.....	5
REVISION HISTORY.....	7

Description - Procedure for replacing hardware on Pneumatic Patient Alert system.

1- IMPORTANT NOTICE

In response to CQAs submitted by field engineers, lower-level replacement parts are now available for the Pneumatic Patient Alert System Kit (46-317758P1). When stock of the 46-317758P1 Pneumatic Patient Alert System Kit is used up, the whole kit will be FRU-N because lower-level replacement parts will be used to service this product.

2- REPLACE CONTROL BOX

1. Remove pneumatic tubing from feed-thru connector on back of control box.
2. Remove power supply jack from control box.
- 3a. If control box is mounted with Velcro, lift control box from mounting surface.
- 3b. If control box is mounted with screws, slide control box up (if mounted on vertical surface), or toward front of shelf (if mounted on shelf), and lift control box from mounting surface.
4. If replacement control box is to be mounted on a vertical surface, or under a shelf, apply the metalized nameplate to control box (see Illustration 2-1).

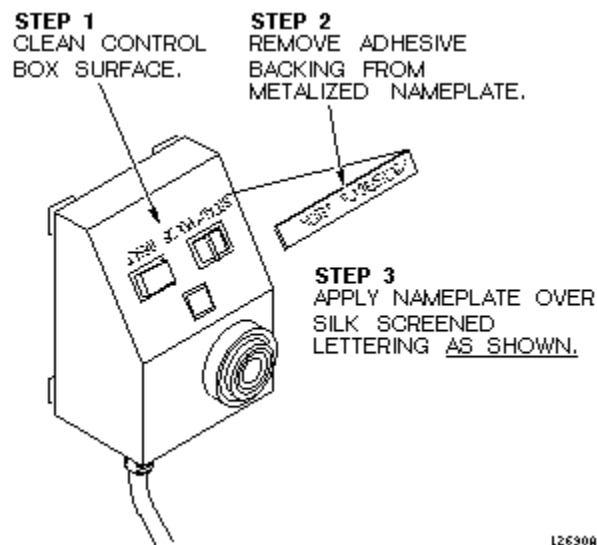


ILLUSTRATION 2-1
NAME PLATE APPLICATION

- a. If control box will be mounted with Velcro, continue to step b. If control box will be mounted with screws, go right to step g.
 - b. Cut a three-inch-long piece of looped Velcro.
 - c. Clean the bottom of control box.
 - d. Note the orientation of the hooked Velcro on the surface from which the old control box was removed.
 - e. Remove protective paper from back of looped Velcro, and apply Velcro to center bottom of control box in same orientation as hooked Velcro.
 - f. Mount the control box by pressing Velcro piece on control box against Velcro piece on mounting surface, and twisting slightly.
 - g. Center control box holes over screws, push control box over screws, and then slide control box downward to seat screws within slots.
 - h. Tighten or loosen screws as necessary to obtain a snug fit of control box against mounting surface.
5. If control box is located on a horizontal surface near the operator workspace, no screws or Velcro are required, and the metalized nameplate is not used.
 6. Push pneumatic tubing fully onto feed-thru connector on back of control box.
 7. Plug power supply jack into control box.
 8. Refer to procedure for Pneumatic Patient Alert System Checks and perform functional check.

3- REPLACE POWER SUPPLY

1. Remove power supply jack from control box.
2. Remove power supply from ac outlet.
3. Plug replacement power supply jack into control box.
4. Set power supply to outlet voltage (115 Vac or 230 Vac).
5. Plug power supply into ac outlet.
6. Refer to procedure for Pneumatic Patient Alert System Checks and perform functional check.

4- REPLACE EXTENDER KIT

1. Remove pneumatic tubing from feed-thru connector on extender kit box.
2. Remove extender kit wire jack from extender kit box.
3. Remove jack at other end of extender kit wire from control box.
4. Lift extender kit box from mounting surface.
5. Cut a two-inch-long piece of looped Velcro.
6. Note the orientation of the hooked Velcro on the surface from which the old extender kit box was removed.
7. Clean the back of extender kit box, remove protective paper from back of looped Velcro, and stick Velcro to center back of extender kit box in same orientation as hooked Velcro.
8. Mount the extender kit box by pressing Velcro piece on extender kit box against Velcro piece on mounting surface, and twisting slightly.
9. Route pneumatic tubing from penetration panel to extender kit box.
10. Push the end of pneumatic tubing fully onto feed-thru connector on side of extender kit box.
11. Push the jack at one end of extender kit wire into the plug on side of extender kit box.
12. Route the extender kit wire from extender kit box to control box. Control box will be installed near operator workspace, within five feet of an electrical outlet.
13. Push the jack at other end of extender kit wire into the plug on back of control box.
14. Refer to procedure for Pneumatic Patient Alert System Checks and perform functional check.

5- REPLACE TUBING / BULB

5-1 Replace Box to PAC Tubing

1. Remove pneumatic tubing from feed-thru connector on control box or extender kit box.
2. Remove pneumatic tubing from equipment room by pulling cable through waveguide in penetration panel from magnet room.
3. Remove magnet side covers on side where pneumatic tubing is routed.

4. Disconnect pneumatic tubing from PAC2 connector behind magnet enclosure cover, and remove pneumatic tubing from under magnet side covers.



Equipment damage possibility. Do not substitute other types of tubing for the pneumatic tubing supplied with this kit. Substitution of other types of tubing may cause a control box malfunction.

5. Insert end of new pneumatic tubing fully into PAC2 connector.



Equipment damage possibility. Be sure that pneumatic tubing is not routed where it can be stepped on, pinched, or can have an object set on it. The control box alarm will not work if pneumatic tubing is pinched.

6. Route pneumatic tubing under side of magnet, behind side covers, to rear pedestal.
7. Replace the magnet side covers.
8. Route pneumatic tubing from rear pedestal to penetration panel with other system cables.
9. Route pneumatic tubing through the waveguide in the penetration panel.
10. Route the pneumatic tubing from penetration panel, equipment room side, to where the control box or extender kit box is installed.
11. Hold the pneumatic tubing to the control box, or extender kit box, and mark length. Leave two inches of extra pneumatic tubing for reconnection.
12. Cut pneumatic tubing.
13. Push pneumatic tubing fully onto feed-thru connector on control box or extender kit box.
14. Refer to procedure for Pneumatic Patient Alert System Checks and perform functional check.

5-2 Replace Bulb to PAC Tubing

1. Remove pneumatic tubing and squeeze bulb from PAC2 Patient Call connector.
2. Remove squeeze bulb from other end.



Equipment damage possibility. Do not substitute other types of tubing for the pneumatic tubing supplied with this kit. Substitution of other types of tubing may cause a control box malfunction.

3. Cut replacement pneumatic tubing (Item 3) from roll to same length as removed piece.
4. Insert one end of pneumatic tubing about one half-inch into squeeze bulb (Item 6).

Note

For ease of inserting pneumatic tubing, pinch pneumatic tubing in one hand while squeezing squeeze bulb and pushing pneumatic tubing in with the other hand. This creates a positive pressure and expands squeeze bulb opening.

5. Push other end of pneumatic tubing fully onto PAC2 Patient Call connector.
6. Loop pneumatic tubing and squeeze bulb over squeeze bulb hanger.
7. Refer to procedure for Pneumatic Patient Alert System Checks and perform functional check.

REVISION HISTORY

REV	DATE	AUTHOR	PRIMARY REASONS FOR CHANGE
0	July 17, 1998	R Hawthorne	Initial conversion to MS Word