



GE Medical Systems

Technical Publications

**Direction 2323545
Revision 1**

Signa® LX-1 PC Upgrade Installation Instructions

Copyright© 2002 by General Electric Co.

Operating Documentation

DAMAGE IN TRANSPORTATION

All packages should be closely examined at time of delivery. If damage is apparent, have notation "**damage in shipment**" written on **all** copies of the freight or express bill **before** delivery is accepted or "signed for" by a General Electric representative or a hospital receiving agent. Whether noted or concealed, damage **MUST** be reported to the carrier **immediately** upon discovery, or in any event, within **14** days after receipt, and the contents and containers held for inspection by the carrier. A transportation company will not pay a claim for damage if an inspection is not requested within this **14** day period.

Immediately complete a "Damage Loss Claim Form", available via MS Exchange Mail, after the damage is found.

MS Exchange Path:

Outlook/Public Folder/All Public Folders/Medical Systems/!Global Initiatives/Information Management/Forms/Common Forms/DAMAGE LOSS CLAIM FORM.

Send the completed form to the email address listed in the form.

For more information about the Transportation Claim Procedure, access the GE Medical Systems Intranet and enter the following URL address (case sensitive):

<ftp://3.87.40.2/globepro/qualsys/Docs/190016MF.PDF>

Rev. 11/15/2000

REVISION HISTORY

<u>REV</u>	<u>DATE</u>	<u>PRIMARY REASON FOR CHANGE</u>
0.....	Jan 23, 2002	Initial version for Release.
1.....	August 6,2002	Added section 2-8 concerning monitor resolution

<u>PAGE</u>	<u>REV</u>	<u>PAGE</u>	<u>REV</u>	<u>PAGE</u>	<u>REV</u>	<u>PAGE</u>	<u>REV</u>
Title Page.....	1						
9-11.....	1						

- This revision/letter corresponds to the indicated document's revision control system.

BLANK PAGE

1- PURPOSE

The kit, 213599-17 allows for the replacement of LX1 PC 2137942 to newer models 2284297, 2192746 or 2192746-3. The modifications are required because the newer PC's are longer than the older model.

Refer to Table 1-1 for parts list in the 2135991-1 Kit.

TABLE 1-1
PARTS LIST

No	Description	Quantity	Illustration Number
1	Power Box Bracket	1	1-1
2	Power Box Support Bracket	1	1-2
3	PC Bracket	1	1-3
4	Serial Adaptor Cable	2	
5	Screw M4X12mm W/Ext	4	

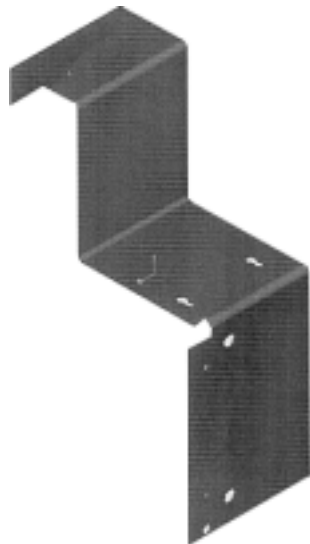


ILLUSTRATION 1-1
POWER BOX BRACKET



ILLUSTRATION 1-2
POWER BOX SUPPORT BRACKET



ILLUSTRATION 1-3
POWER BOX SUPPORT BRACKET

2- PROCEDURE

2-1 Remove Power From The Operator Workspace Cabinet



FATAL ELECTRIC SHOCK HAZARD!! ENSURE THAT POWER IS OFF TO THE INVOLVED UNITS BEFORE STARTING ANY PROCEDURE IN THIS DOCUMENT.

1. Log out from Host Computer.
2. Shut down the Host Computer.
3. Bring the PC down by closing the Program Manager.
4. As applicable, open the circuit breaker(s) that power the Operator Workspace to turn power off.
5. Lock and tag the circuit breaker(s). (Refer to CD-ROM *Dir. 2160623, MR Release Signa LX Service Methods, Renewal Parts and Service Tools, Safety, Section 6, OSHA LOCKOUT/TAGOUT REQUIREMENTS.*)

Open computer cabinet door and verify that power to the Operator Workstation is off by twice pressing (on/off) the power button on the Host Computer; the power LED should not blink or turn on.

2-2 Remove The Cabinet Covers, Failed PC and Indigo Computer

Refer to Service CDROM 2160623, Operator WorkSpace, and then WorkSpace Cabinet replacement and maintenance that is appropriate for your system for information on removing the covers, failed PC and Indigo computer from the cabinet.

2-3 Remove the Cabinet Power Box

Remove the Cabinet Power Box and set aside, refer to illustration 2-1.

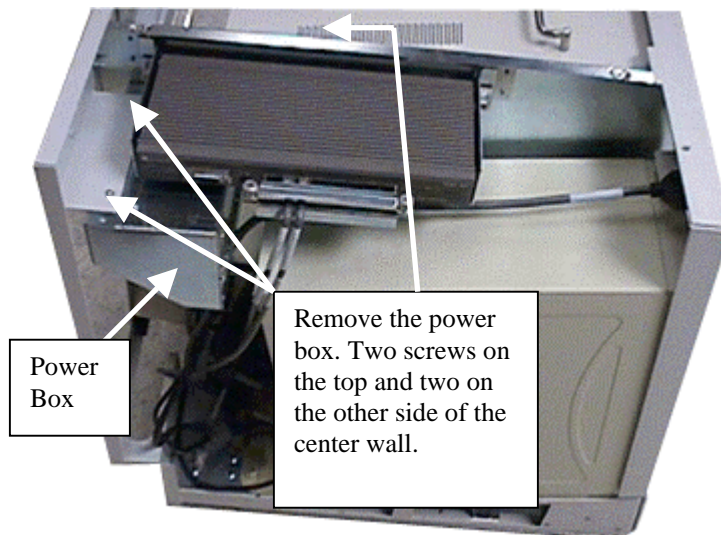


ILLUSTRATION 2-1
REMOVE POWER BOX

2-3 Install Power Box Bracket

Install the power box bracket as shown in Illustration 2-2.

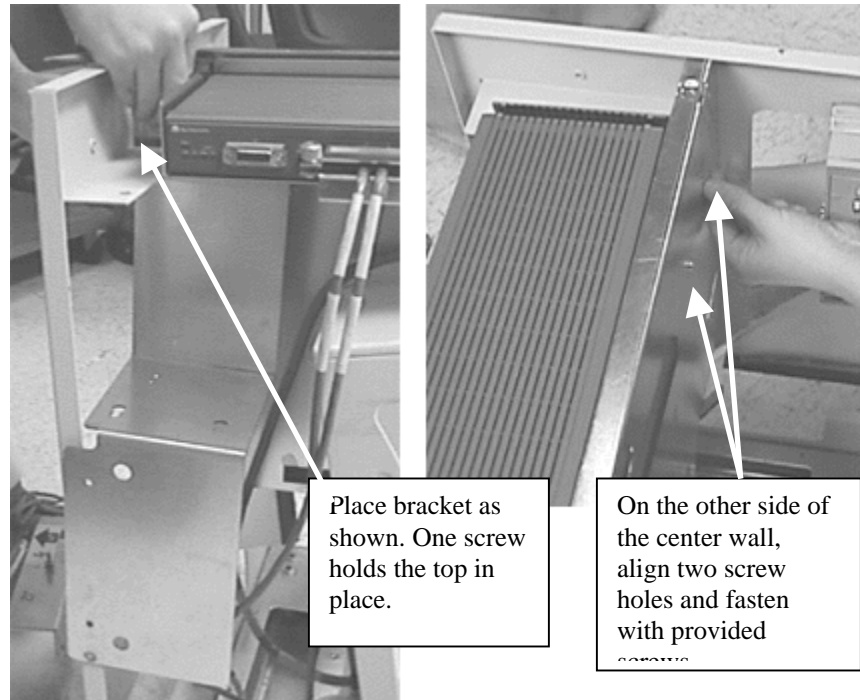


Illustration 2-2
Installing Power Bracket

2-4 Reinstall The Power Box onto the Power Box Bracket

Refer to Illustration 2-3 and reinstall the power box onto the power box bracket.

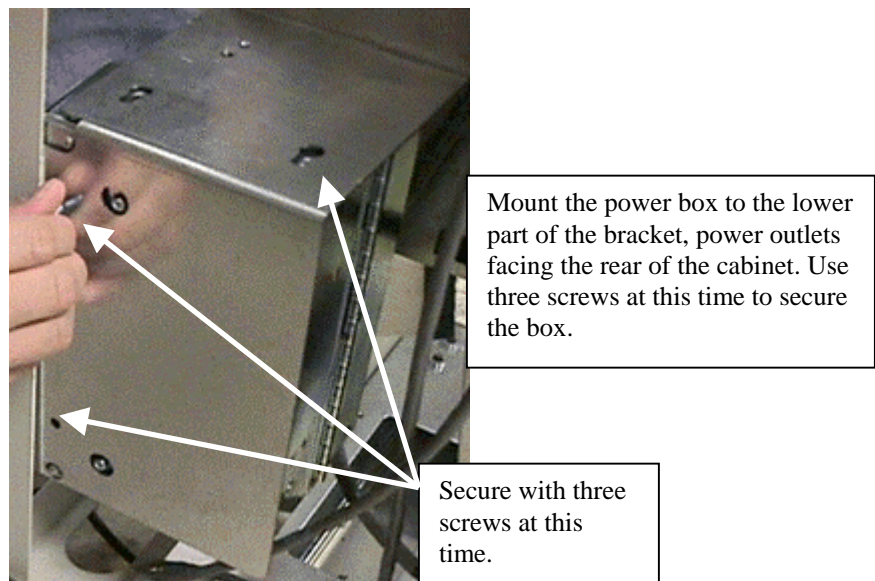


ILLUSTRATION 2-3
REINSTALLING THE POWER BOX

2-5 Install Power Box Support Bracket

Refer to Illustration 2-4 to install the support bracket.

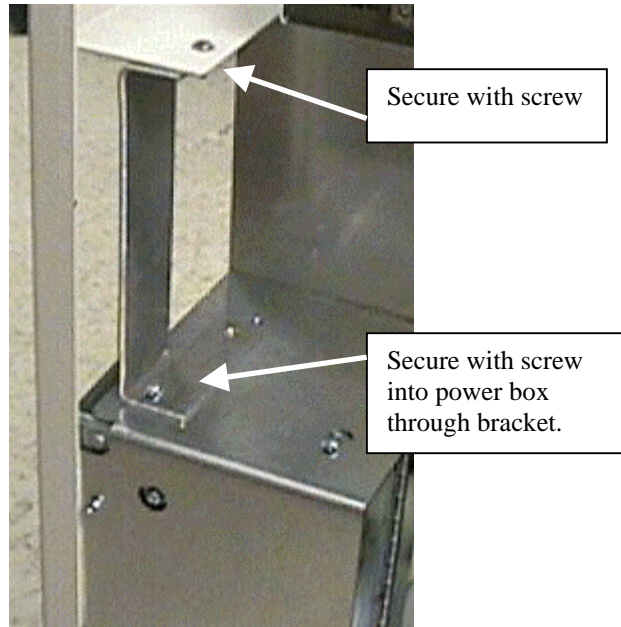


ILLUSTRATION 2-4
INSTALL SUPPORT BRACKET

2-6 Insert new PC and secure rear with PC Bracket

The PC bracket hooks on to the rear of the PC and secures to the base of the cabinet as shown in Illustration 2-5.

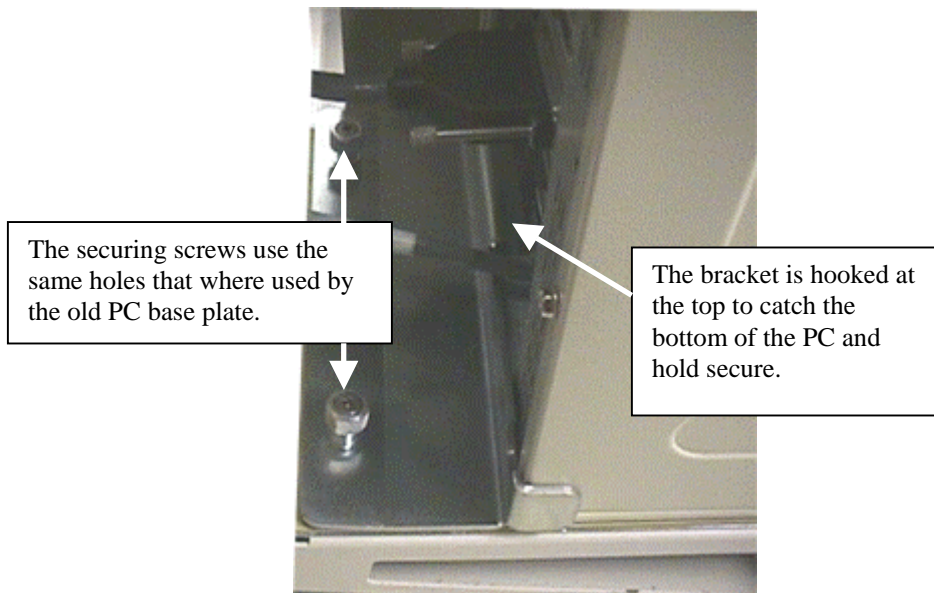


ILLUSTRATION 2-5
SECURING THE PC BASE

2-7 Reassemble the WorkSpace Cabinet

Reassemble the WorkSpace cabinet. Use the Serial adaptor cables where needed for the PC to complete the installation.

2-8 Changing the LCD Resolution

The LCD screen area setting must be defaulted from a **800 x 600** pixel setting to a **640 x 840** pixel setting. Failure to do so will result in an improper LCD display every time the PC is powered up.

The LCD screen area setting can only be changed from the Windows SAFE MODE.

The procedure for entering the Windows SAFE MODE and changing the LCD screen area setting is as follows:

1. Power up the PC.
2. While the PC is powering up, Press the F5 key.
3. The Windows Advanced Options menu will appear.
4. Select SAFE MODE using the arrow keys and press ENTER.
5. When Windows is up and running select the Windows START button on the lower left hand side of the screen. Refer to Illustration 2-6.

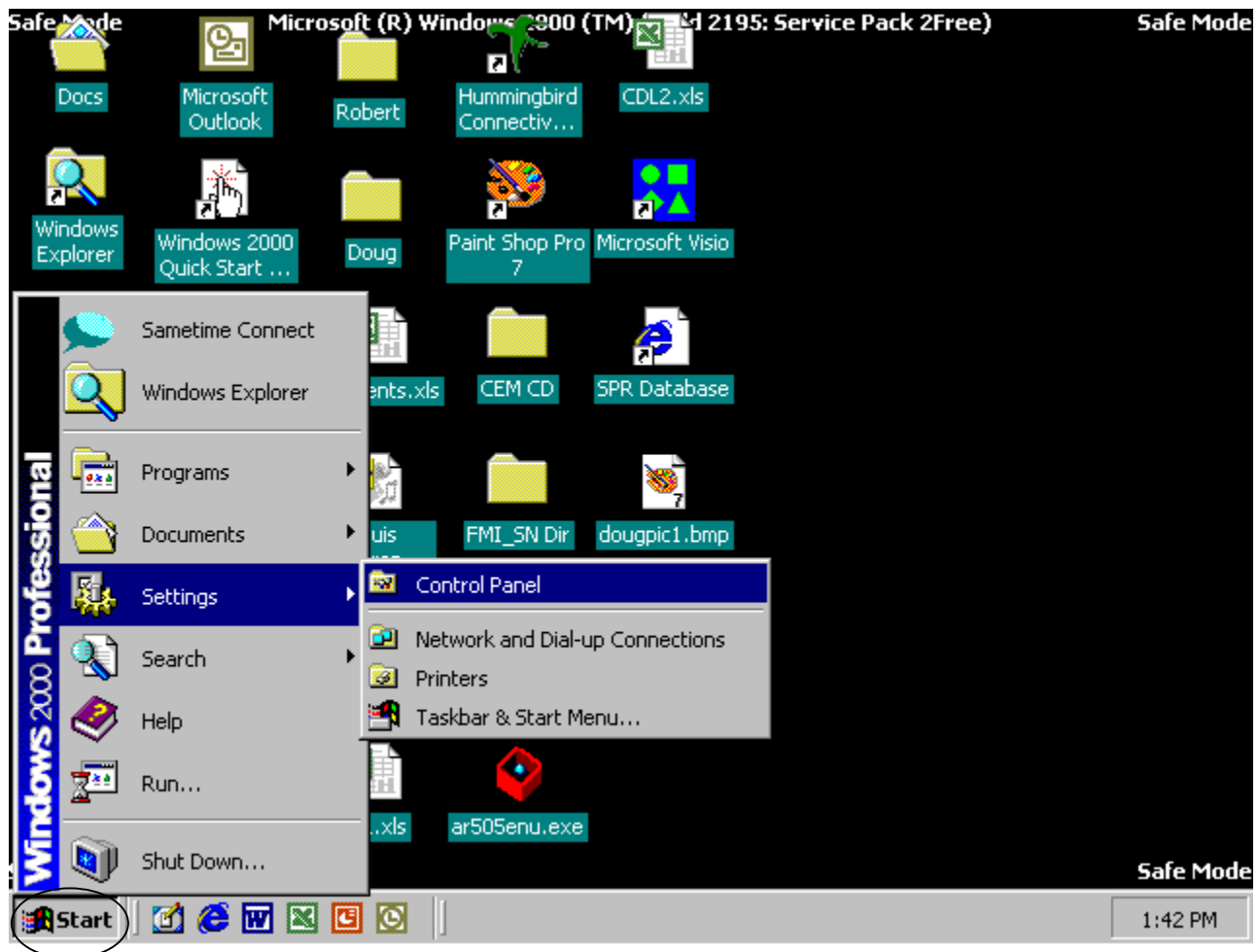


ILLUSTRATION 2-6
ACCESSING THE CONTROL PANEL

6. Select SETTINGS, then CONTROL PANEL. Refer to Illustration 2-6.
7. Double click on the DISPLAY icon. Refer to Illustration 2-7.

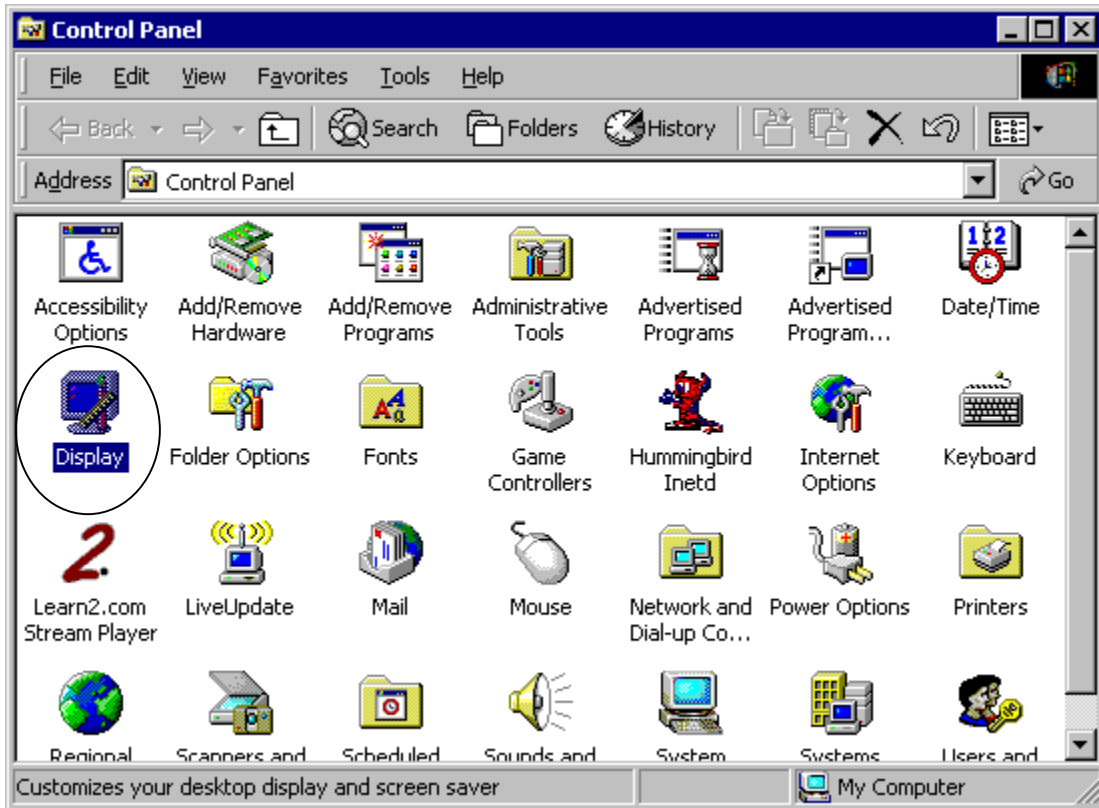


ILLUSTRATION 2-7
DISPLAY ICON

8. Select the SETTINGS tab and change the SCREEN AREA setting to **640 x 480** pixels using the mouse. Refer to Illustration 2-8.

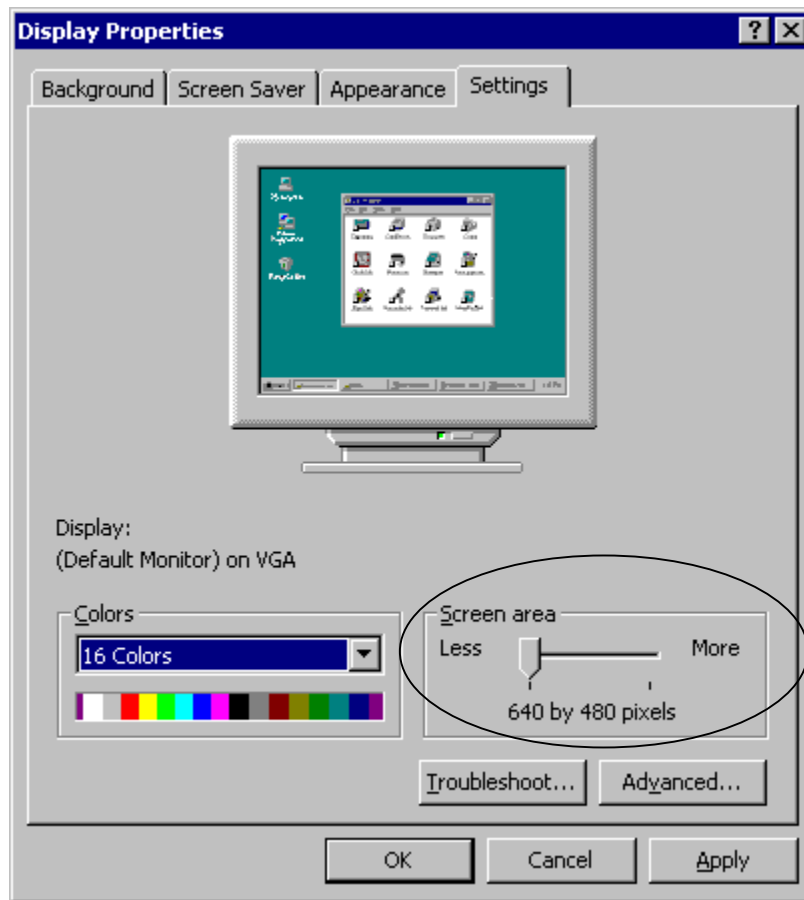


ILLUSTRATION 2-8
DISPLAY PROPERTIES

9. Click APPLY, then OK.
10. The new settings will be saved and set as the new default settings.
11. Restart the PC.