

Optima CT680 GANTRY INTERCONNECT

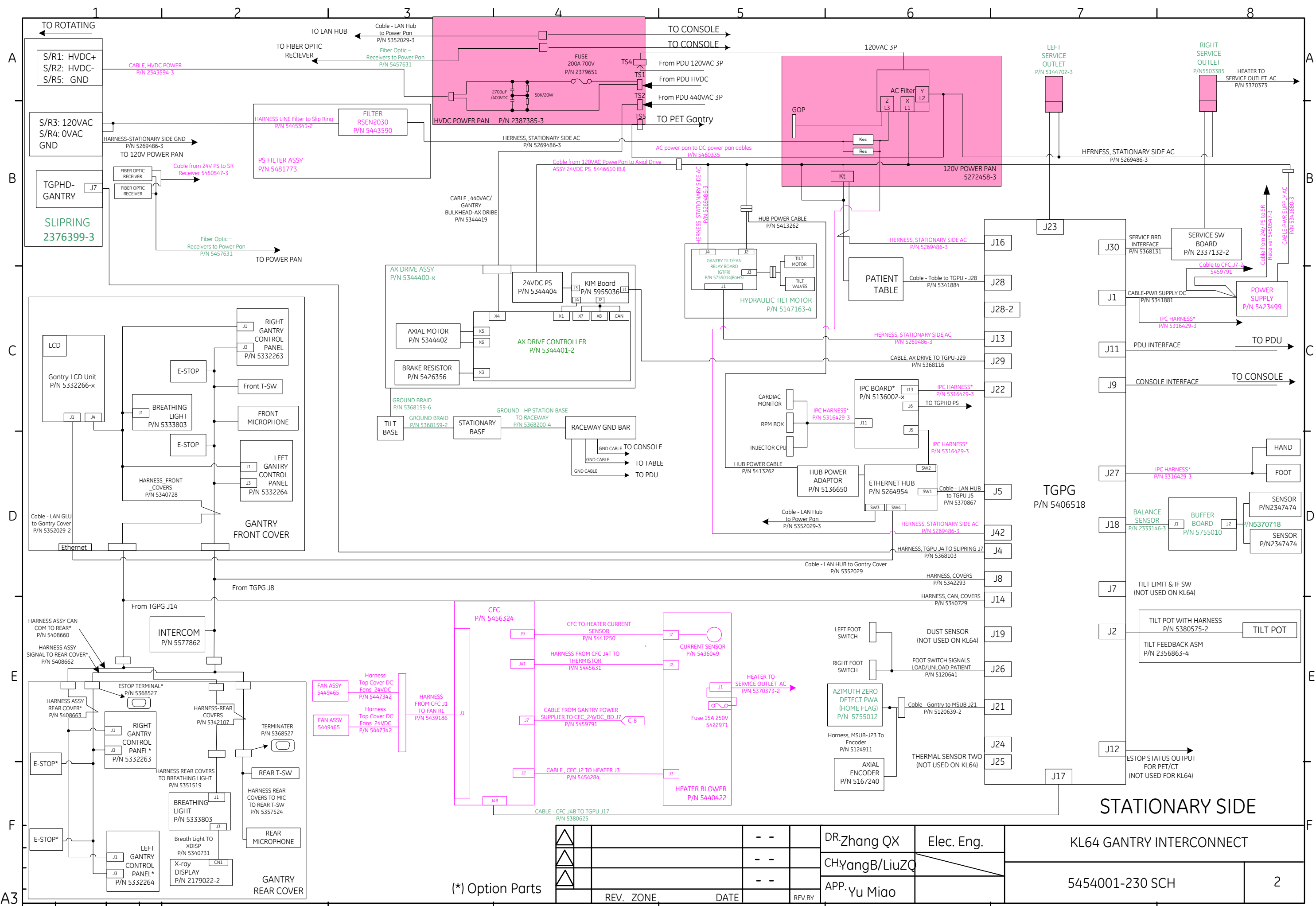
This interconnect diagram applies to Gantry parts number listed below.

5454001-230
5454001-330
5454001-620

△		P1	Add gantry physical ID.	ECR2281785	2019. 10. 11	FuZY	
△		P1	Add gantry physical ID.	ECR2232444	2017. 06. 19	YangB	
△		P3	Change PS, cables and remove fuse holder.	ECR2220423	2016. 11. 15	YangB	
△		P2	Update Service Outlet Assys for PET.	ECR2181190	2014. 10. 30	YangB	
△		P2	Update to Merc40 DAS and related parts.	ECR2165596	2014. 03. 10	YangB	
△		P2	Modify CFC and heater blower assy part.	ECR2157190	2013. 09. 26	ZhangQX	
△		P2	Replace 5450547 with 5450547-3.	ECR2153221	2013. 07. 09	YangB	
△		All	Initial Release for KL64				

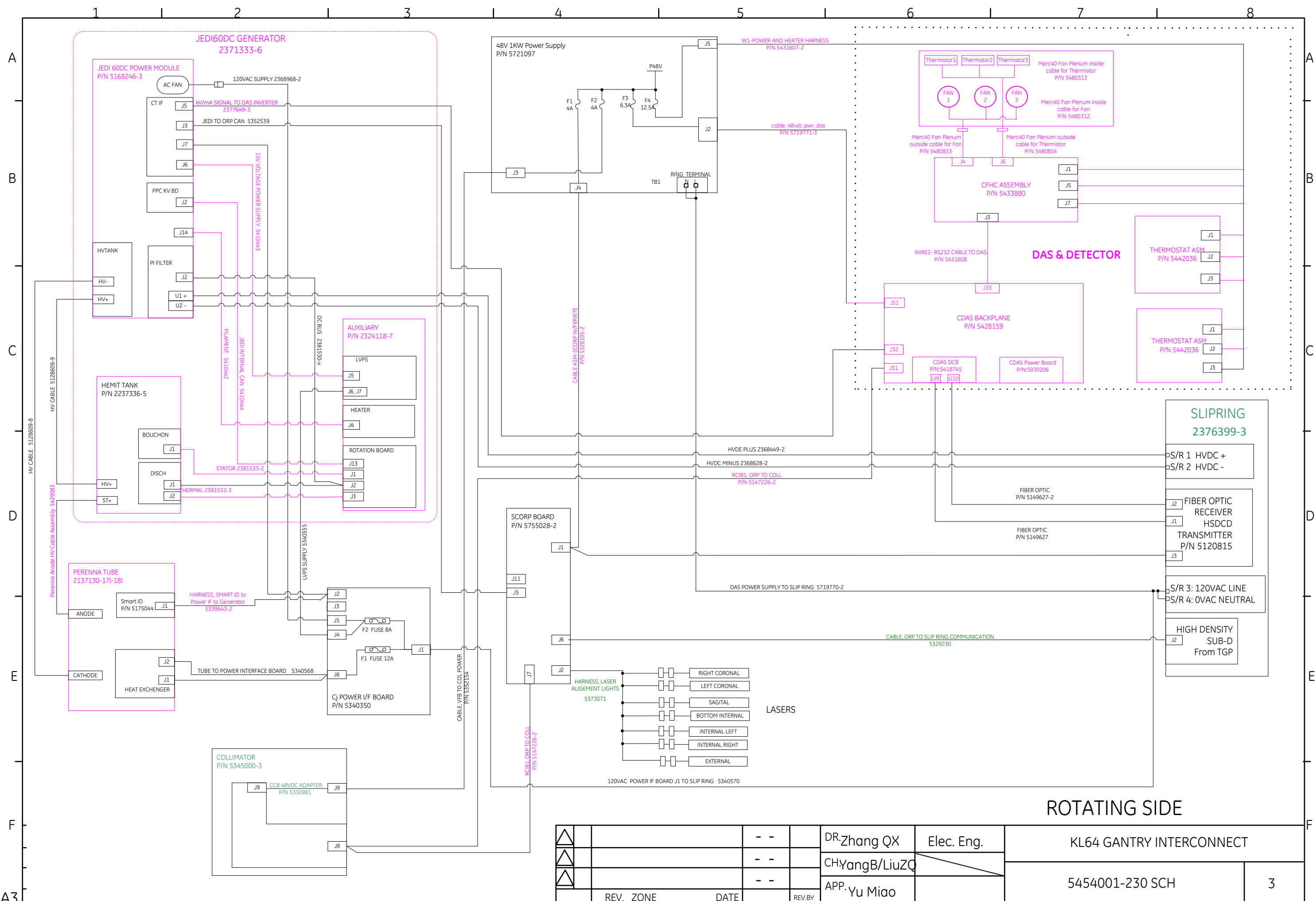
REV.	PAGE	DESCRIPTION	—	ECR/ECO	—	DATE	REV. BY	CH.
△		DR. ZhangQX	Elec.	KL64 GANTRY INTERCONNECT				
△		CH. YangB/LiuZQ						
△		APP. Yu Miao		5454001-230 SCH				PAGE OF 1/3

State-RELEASE - Document is released and under formal Change Control. Changes are subject to the ECR/ECO Process. See the GEHC Myworkshop System to determine the status of this document.



REV.	ZONE	DATE	REV. BY	DR: Zhang QX	Elec. Eng.	KL64 GANTRY INTERCONNECT	
				CH: YangB/LiuZQ			
				APP: Yu Miao		5454001-230 SCH	2

State-RELEASE - Document is released and under formal Change Control. Changes are subject to the ECR/ECO Process.
 See the GEHC Myworkshop System to determine the status of this document.



REV. 1					DR-Zhang QX	Elec. Eng.	KL64 GANTRY INTERCONNECT	
REV. 2					CHYangB/LiuZQ		5454001-230 SCH	
REV. 3					APP. Yu Miao		3	
REV.	ZONE	DATE	REV. BY					