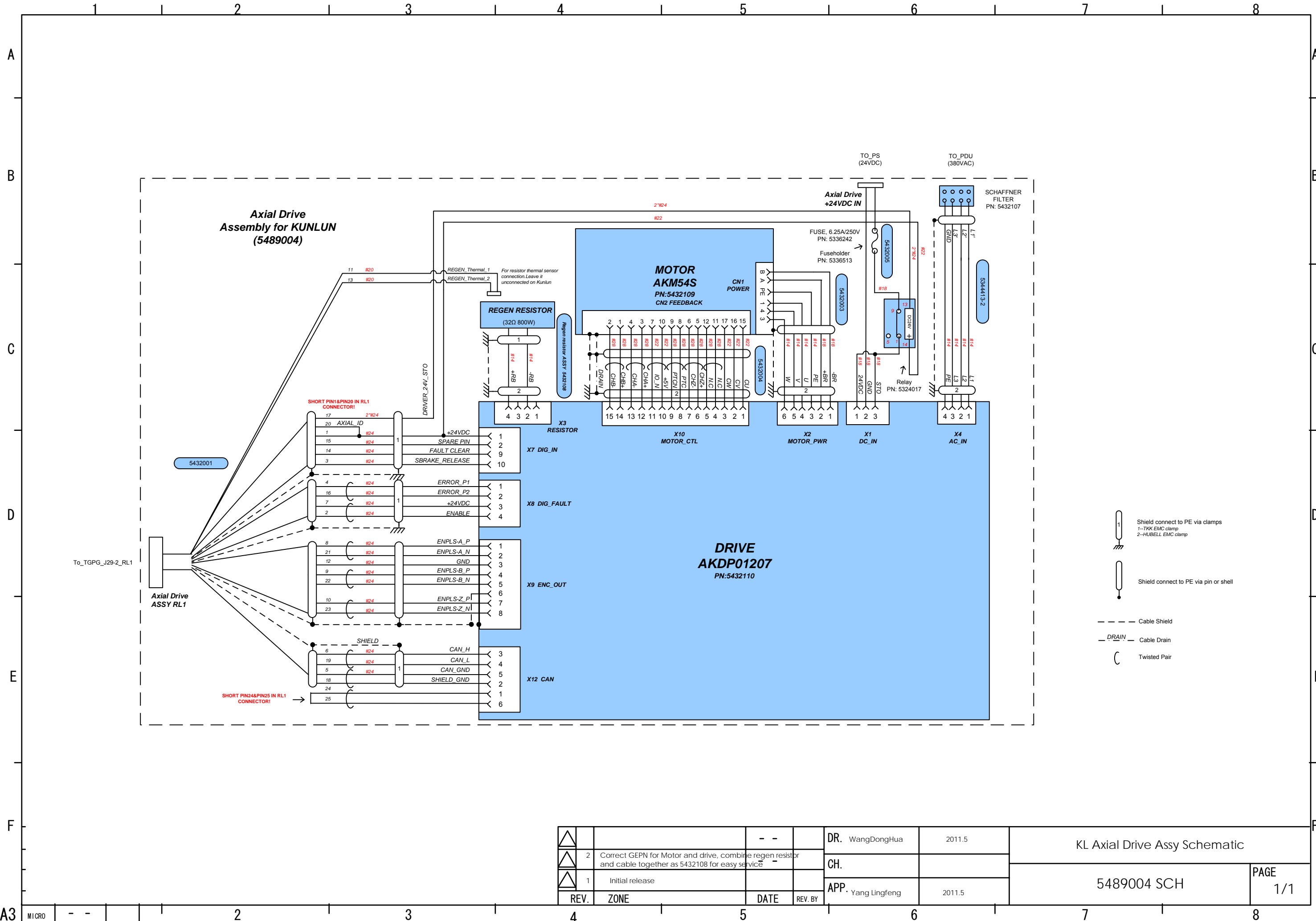


State: RELEASE - Document is released and under formal Change Control. Changes are subject to the ECR/ECO Process. See the GEHC Myworkshop System to determine the status of this document.



| | | | | | | | |
|---|------|---|------|---------|---------------|--------|-------------------------------|
| △ | | | | DR. | WangDongHua | 2011.5 | KL Axial Drive Assy Schematic |
| △ | 2 | Correct GEPN for Motor and drive, combine the regen resistor and cable together as 5432108 for easy service | | CH. | | | |
| △ | 1 | Initial release | | APP. | Yang Lingfeng | 2011.5 | 5489004 SCH |
| | REV. | ZONE | DATE | REV. BY | | | PAGE 1/1 |