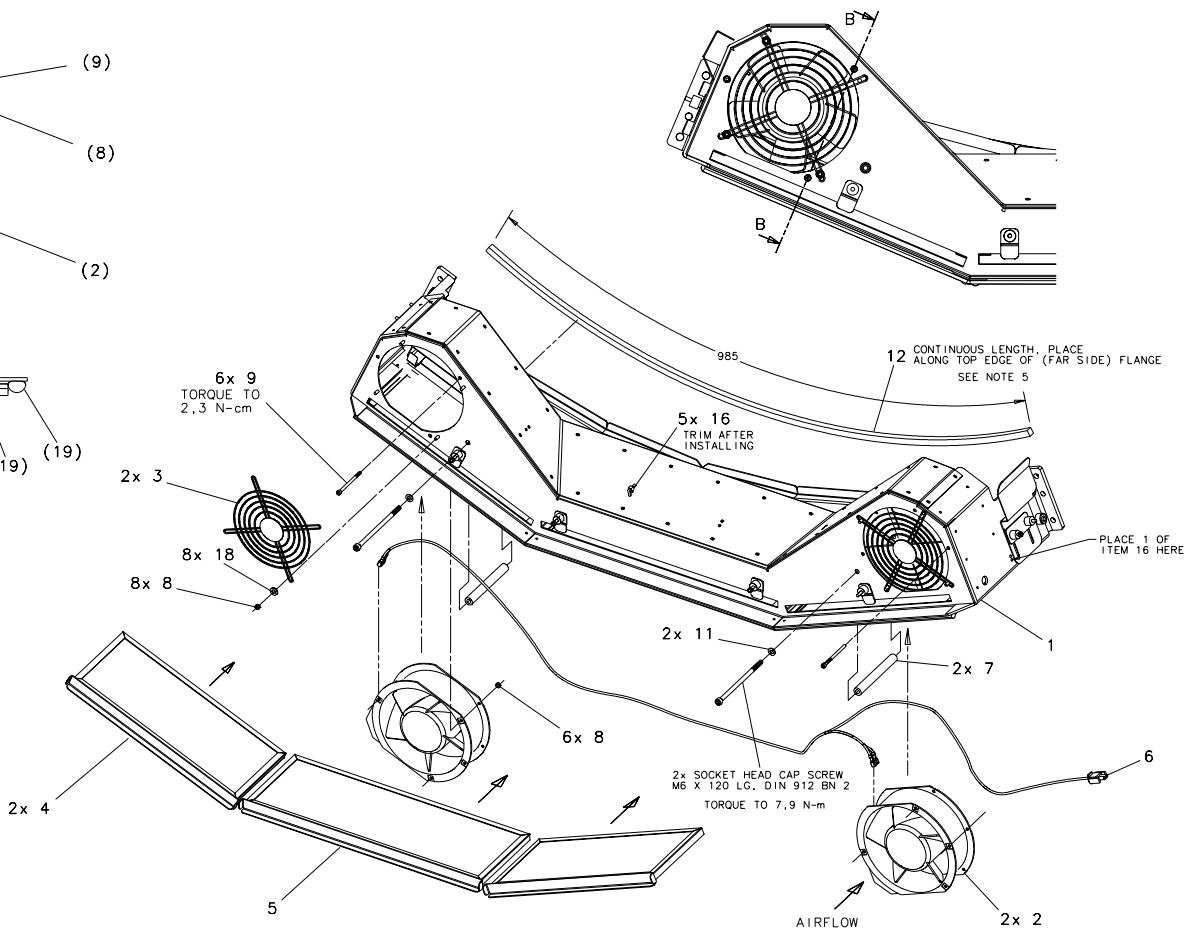


B-B

NOTES:

1. APPLY LOCTITE (ITEM 14) TO SCREWS OR NUTS THAT DO NOT USE LOCK WASHERS
TORQUE M4 FASTENERS TO 2,3 N-cm
TORQUE M6 FASTENERS TO 7,9 N-m
2. INSERT HARNESS (ITEM 6) THROUGH HOLE IN RIGHT SIDE OF DUCT AND PULL THROUGH UNTIL THE LARGE CONNECTOR IS APPROXIMATELY 30 CM FROM THE HOLE.
3. CONNECT HARNESS TO FANS
4. INSTALL TY-RAPS (ITEM 16) AFTER FANS ARE SECURED, REMOVE SLACK FROM HARNESS TO ENSURE A MAXIMUM AMOUNT OF HARNESS PROTRUDES FROM DUCT
5. CLEAN MATING SURFACE WITH 100% ISOPROPYL ALCOHOL AND LINT FREE CLOTH PRIOR TO ASSEMBLY.
6. ASSEMBLY MASS (KG) TO FIT THE FOLLOWING CHARACTERISTICS.



2x SOCKET HEAD CAP SCREW
M6 X 120 LG. DIN 912 BN 2
TORQUE TO 7,9 N-m

AIRFLOW