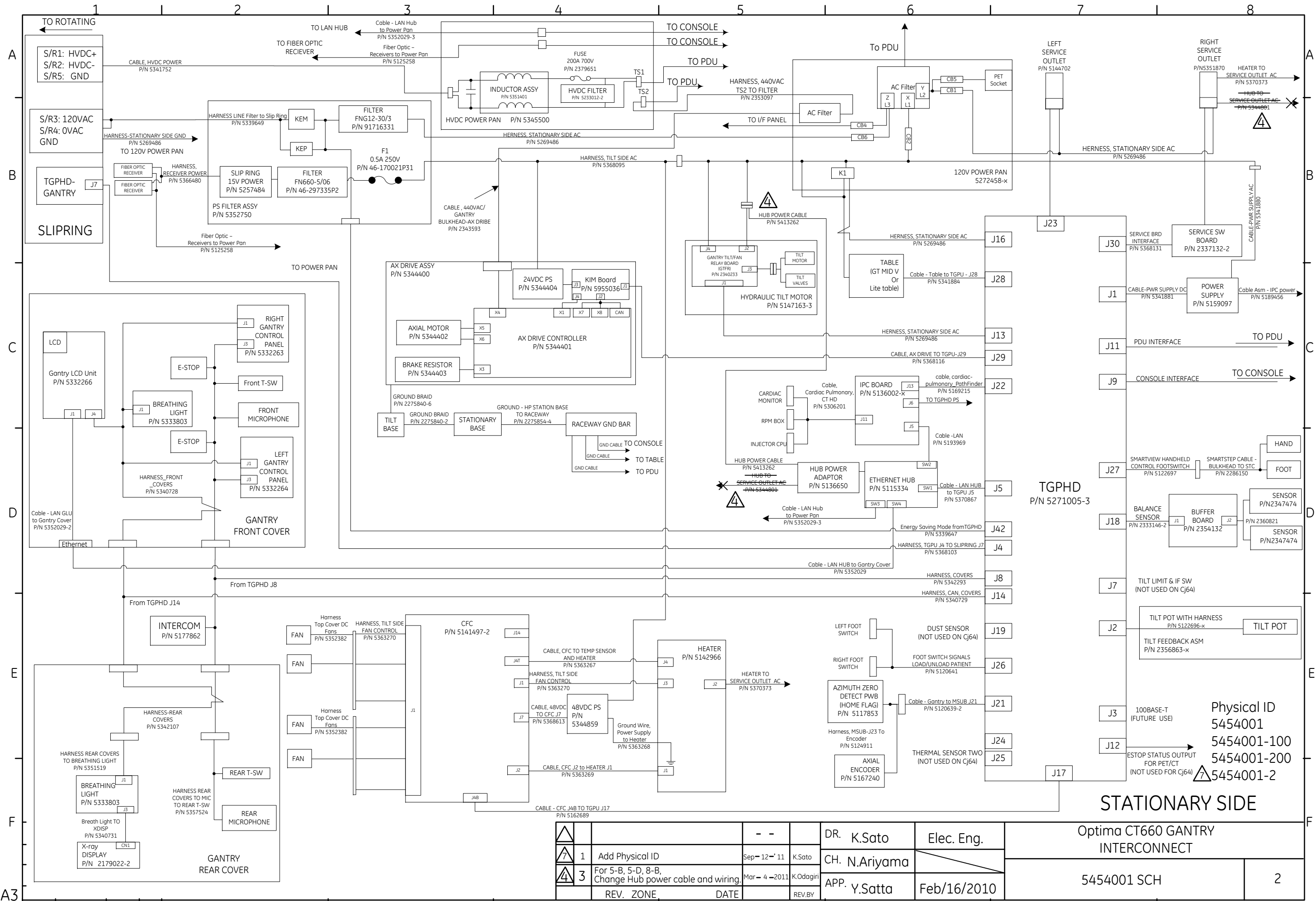


State: RELEASE - Document is released and under formal Change Control. Changes are subject to the ECR/ECO Process. See the GEHC Myworkshop System to determine the status of this document.



**STATIONARY SIDE**

		DR. K.Sato		Elec. Eng.		Optima CT660 GANTRY INTERCONNECT	
1		Add Physical ID		Sep-12-'11		K.Sato	
3		For 5-B, 5-D, 8-B, Change Hub power cable and wiring.		Mar-4-2011		K.Odagiri	
REV. ZONE		DATE		REV.BY			
		APP. Y.Satta		Feb/16/2010		5454001 SCH	
						2	

SIZE A3

技術部

Form Y-13A-1

Approved Document - 5454001SCH\_r7.pdf Page 3 of 6

GE Healthcare Japan Corporation