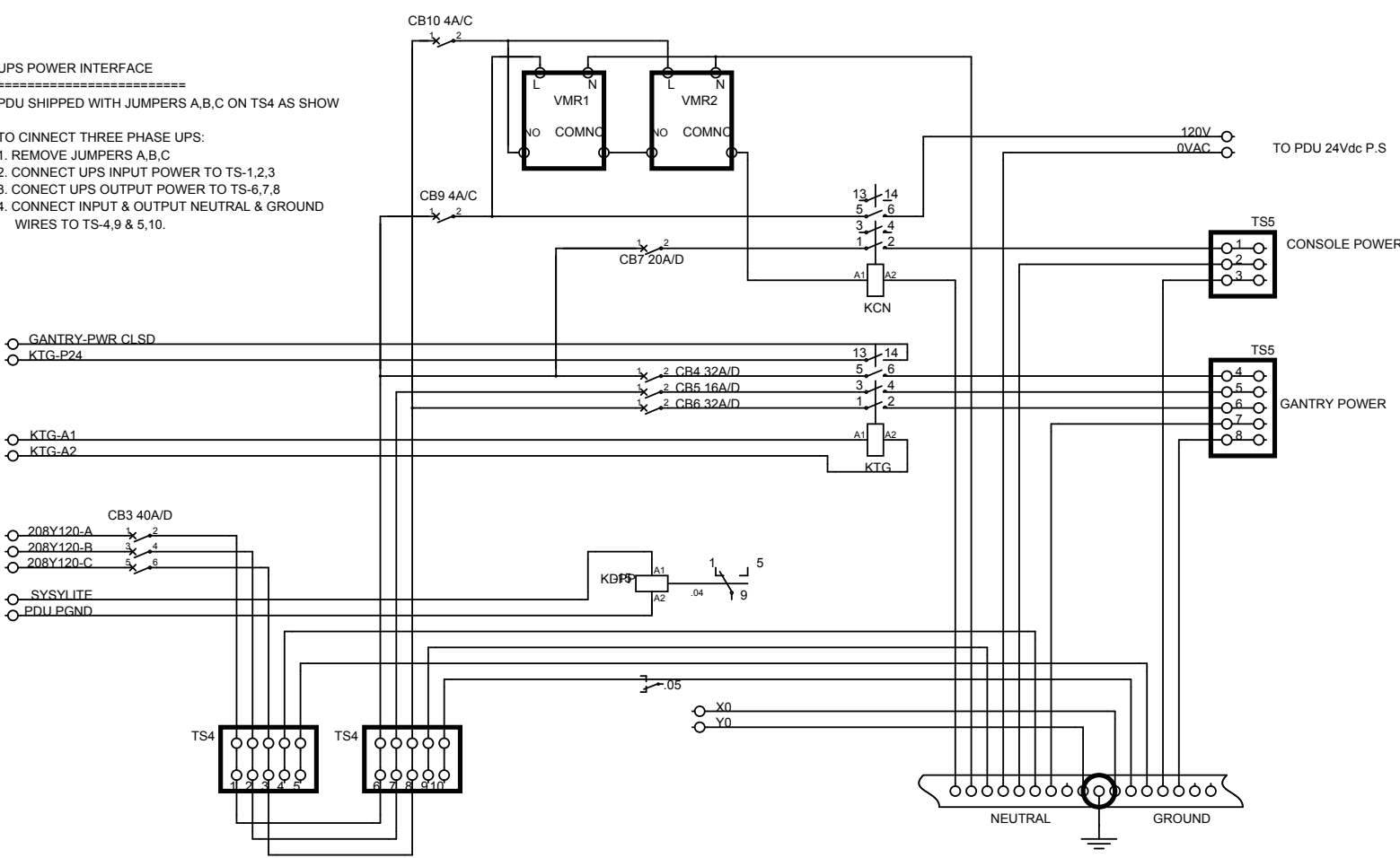


UPS POWER INTERFACE
=====

PDU SHIPPED WITH JUMPERS A,B,C ON TS4 AS SHOW

- TO CINNECT THREE PHASE UPS:
1. REMOVE JUMPERS A,B,C
 2. CONNECT UPS INPUT POWER TO TS-1,2,3
 3. CONECT UPS OUTPUT POWER TO TS-6,7,8
 4. CONNECT INPUT & OUTPUT NEUTRAL & GROUND WIRES TO TS-4,9 & 5,10.



GANTRY-PWR CLSD
KTG-P24

KTG-A1
KTG-A2

CB3 40A/D

208Y120-A
208Y120-B
208Y120-C

SYSYLITE
PDU PGND

TS4

TS4

X0
Y0

NEUTRAL

GROUND

120V
0VAC

TO PDU 24Vdc P.S

TS5

CONSOLE POWER

TS5

GANTRY POWER