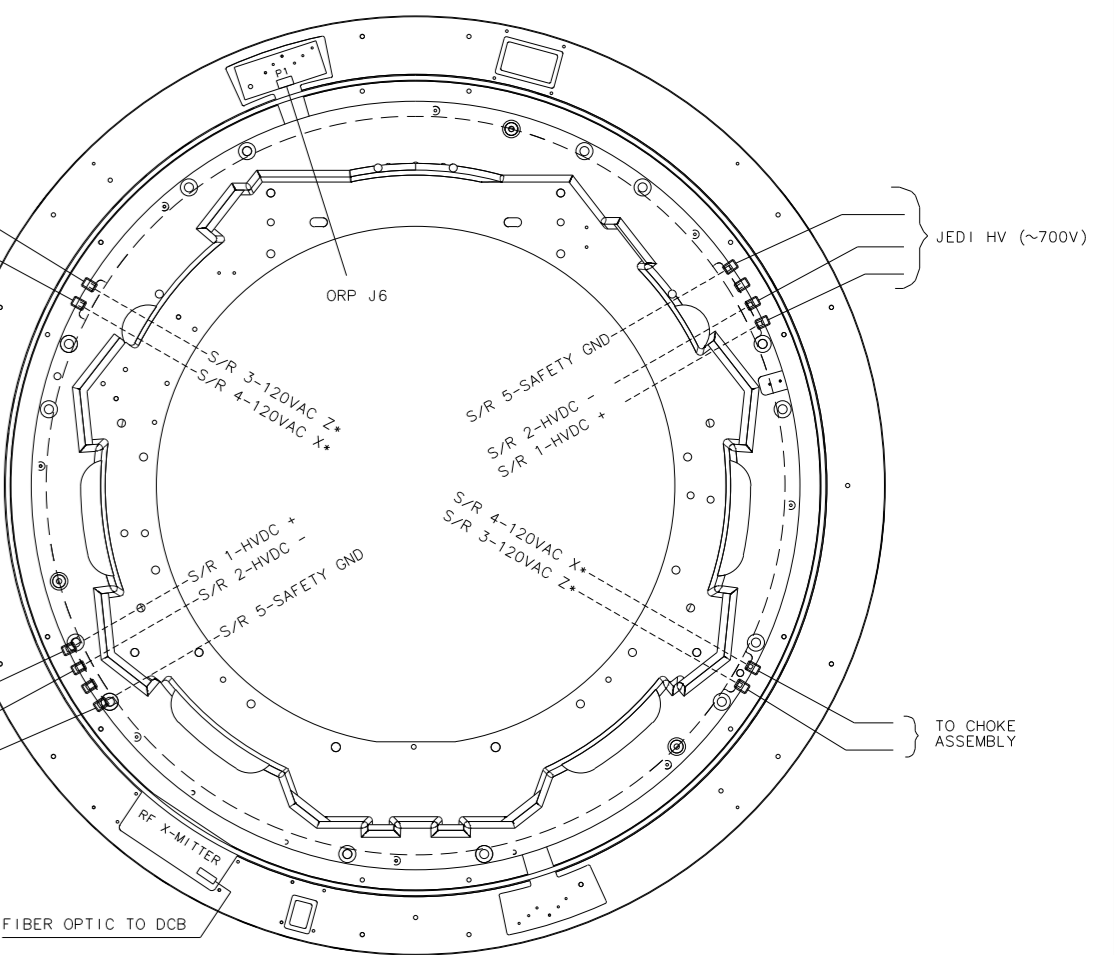
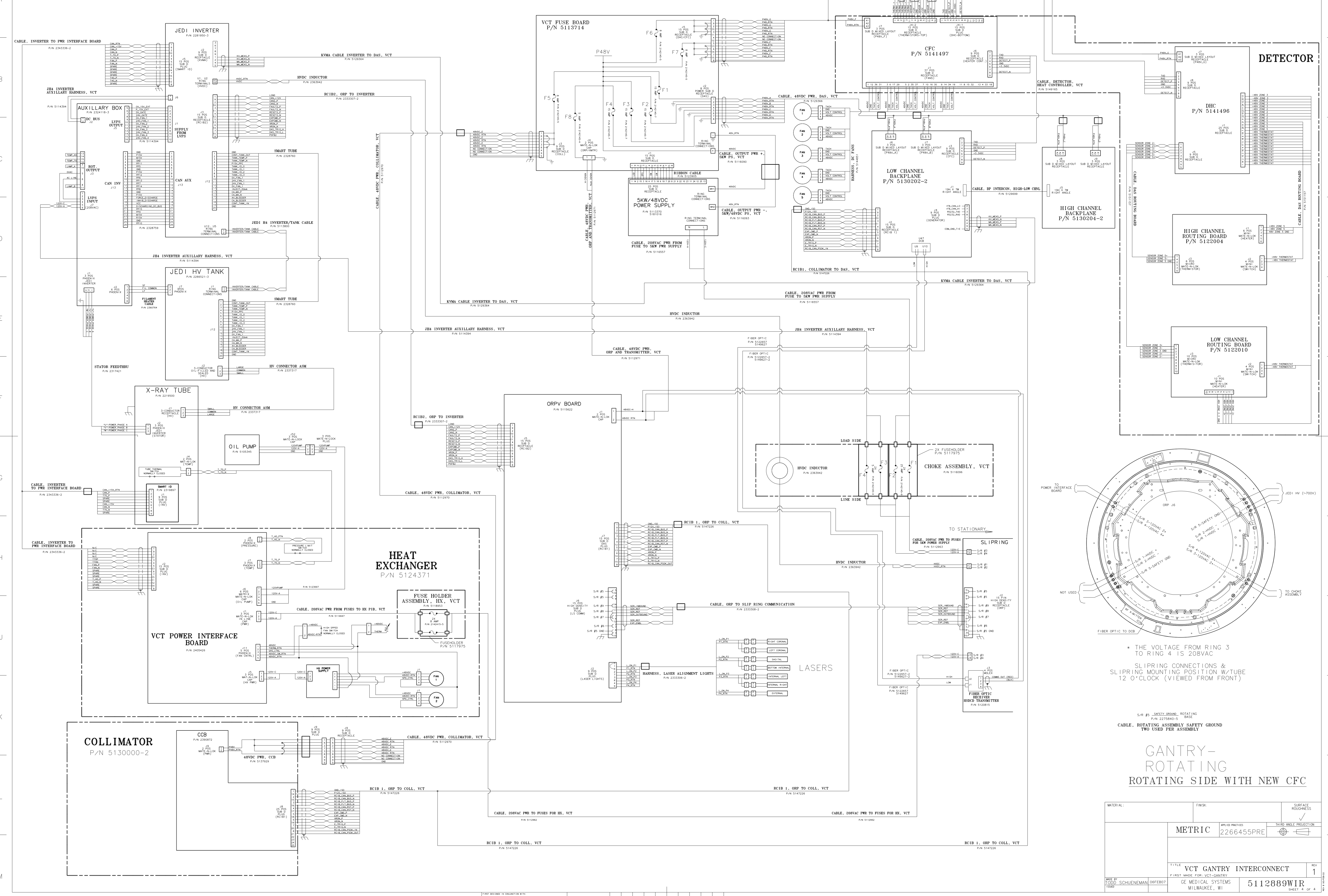


REV	QTY	MADE BY	CH	DATE	PCN/FZZ NO.	DESCRIPTION



\* THE VOLTAGE FROM RING 3 TO RING 4 IS 208VAC

SLIPRING CONNECTIONS & SLIPRING MOUNTING POSITION W/TUBE 12 O'CLOCK (VIEWED FROM FRONT)

S/R #5 - SAFETY GROUND, ROTATING

CABLE, ROTATING ASSEMBLY SAFETY GROUND TWO USED PER ASSEMBLY

MATERIAL:		FINISH:	SURFACE FINISH:
METRIC		APPLIC. PRACTICES: 2266455PRE	THIRD ANGLE PROJECTION
<b>GANTRY-ROTATING ROTATING SIDE WITH NEW CFC</b>			
TITLE: VCT GANTRY INTERCONNECT		REV 1	
FIRST MADE FOR: VCT-GANTRY		GE MEDICAL SYSTEMS MILWAUKEE, WI	
DRAWN BY: TODD SCHUENEMAN 06FEB07		5112889WIR	
CHECKED BY: JEFFREY W. HARRIS 07FEB07		SHEET 4 OF 4	

SHEET COMPLETE - Production parts may not be defined by this document. It is an uneditable finished draft. See the GEHC Myworkshop System to determine the status of this document.