

Chapter 2

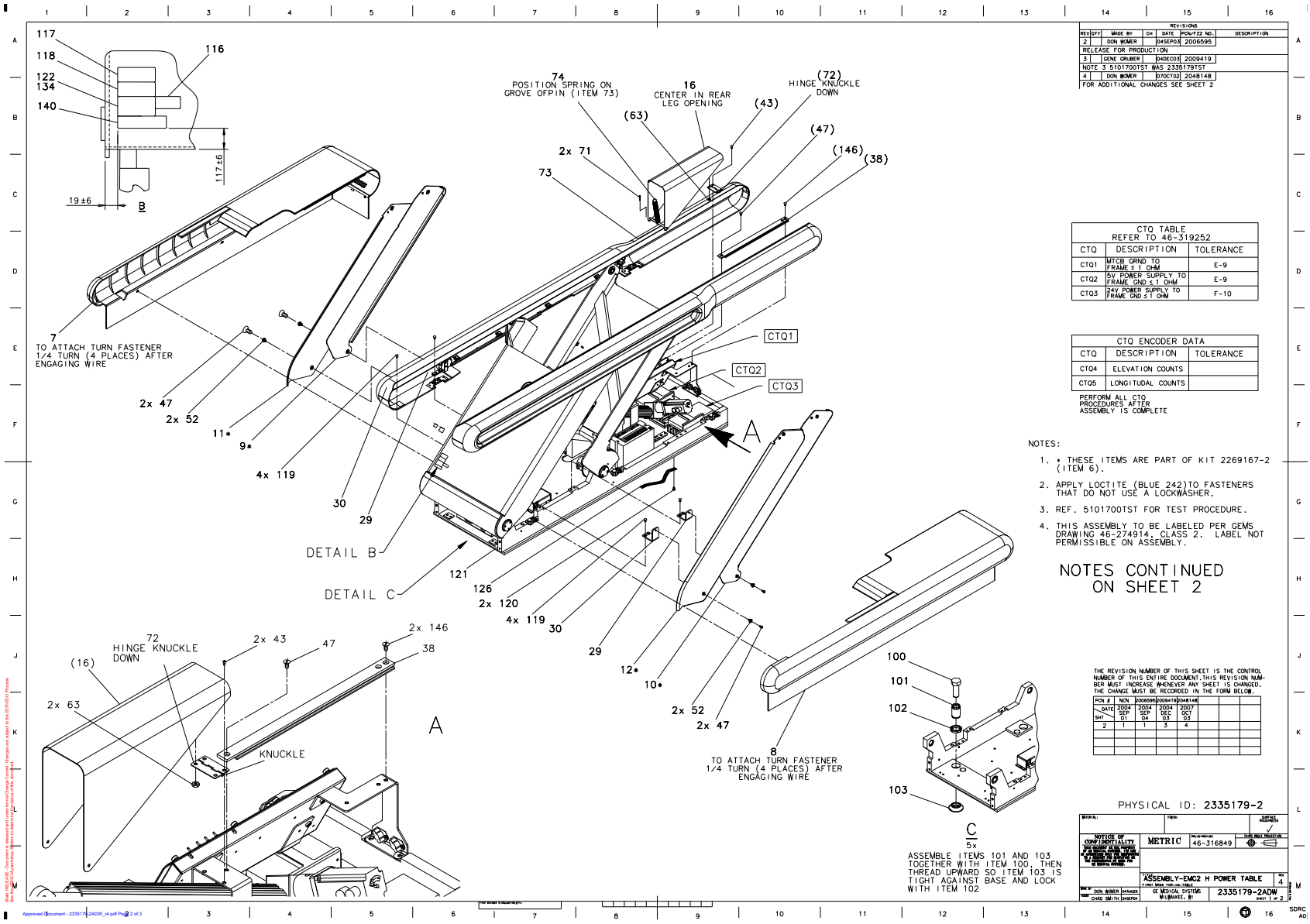
Table

MARK	NUMBER	QTY	FRU CODE	DESCRIPTION/NAME
1	2335179-2	1.0	Yes	ASSEMBLY-EMC CT_HPOWER TABLE, H4-TABLE <i>For further detail, see Section 1.0, beginning on page 38.</i>
3	2115996-3	1.0	Yes	AXIAL HEADHOLDER ASM WITH RATING PLATE AND SELF-CATCHING LATCH
4	2115990-3	1.0	Yes	LCC HSA METALLESS SUPINE CORNAL HEADHOLDER ASM WITH RATING PLATE AND SELF-CATCHING LATCH
5	2115993-2	1.0	Yes	LCC METALLESS CRADLE EXTENDER HSA METALLESS FOOT EXTENDER WITH RATING PLATE AND SELF-CATCHING LATCH
8	2331933	1.0	Yes	METALLESS COMPATIBLE PHANTOM HOLDER
2	2330508	1.0	No	FOOT SWITCH ASSEMBLY <i>For further detail, see Section 2.0, beginning on page 82.</i>

Table 2-1 Collector Kit- EMC CT_Hpower Table Assembly with Footswitch, H4-table (2373155-2 BOM, Rev 1)

Section 1.0 — CT_HPOWER TABLE, H4-TABLE (2335179-2)

FRU = YES



REVISIONS			
REV	DATE	BY	DESCRIPTION
1			RELEASE FOR PRODUCTION
2			NOTE 3 5101700TST WAS 2335179TST
3			FOR ADDITIONAL CHANGES SEE SHEET 2

CTO TABLE REFER TO 46-519252		
CTO	DESCRIPTION	TOLERANCE
CT01	MTCB GRND TO FRAME ± 1 OHM	E-9
CT02	5V POWER SUPPLY TO FRAME GRND ± 1 OHM	E-9
CT03	24V POWER SUPPLY TO FRAME GRND ± 1 OHM	F-10

CTQ ENCODER DATA		
CTQ	DESCRIPTION	TOLERANCE
CT04	ELEVATION COUNTS	
CT05	LONGITUDINAL COUNTS	

PERFORM ALL CTQ PROCEDURES AFTER ASSEMBLY IS COMPLETE

- NOTES:
- THESE ITEMS ARE PART OF KIT 2269167-2 (ITEM 6).
 - APPLY LOCTITE (BLUE 242) TO FASTENERS THAT DO NOT USE A LOCKWASHER.
 - REF. 5101700TST FOR TEST PROCEDURE.
 - THIS ASSEMBLY TO BE LABELED PER GEMS DRAWING 46-274914, CLASS 2. LABEL NOT PERMISSIBLE ON ASSEMBLY.

NOTES CONTINUED ON SHEET 2

THE REVISION NUMBER OF THIS SHEET IS THE CONTROL NUMBER OF THIS ENTIRE DOCUMENT. THIS REVISION NUMBER MUST INCREASE WHENEVER ANY SHEET IS CHANGED. THE CHANGE MUST BE RECORDED IN THE FORM BELOW.

REV	DATE	BY	DESCRIPTION
1			
2			
3			
4			
5			
6			
7			
8			
9			
10			
11			
12			
13			
14			
15			
16			

PHYSICAL ID: 2335179-2

OFFICE OF CONFIDENTIALITY	CLASSIFICATION	CONTROL NUMBER
	METRIC	46-316849
ASSEMBLY-EMC2 H POWER TABLE		
REV	DATE	DESCRIPTION
1		2335179-2ADW

Figure 2-1 CT_HPOWER TABLE, H4-TABLE (2335179-2 Sheet 1, Rev 4)

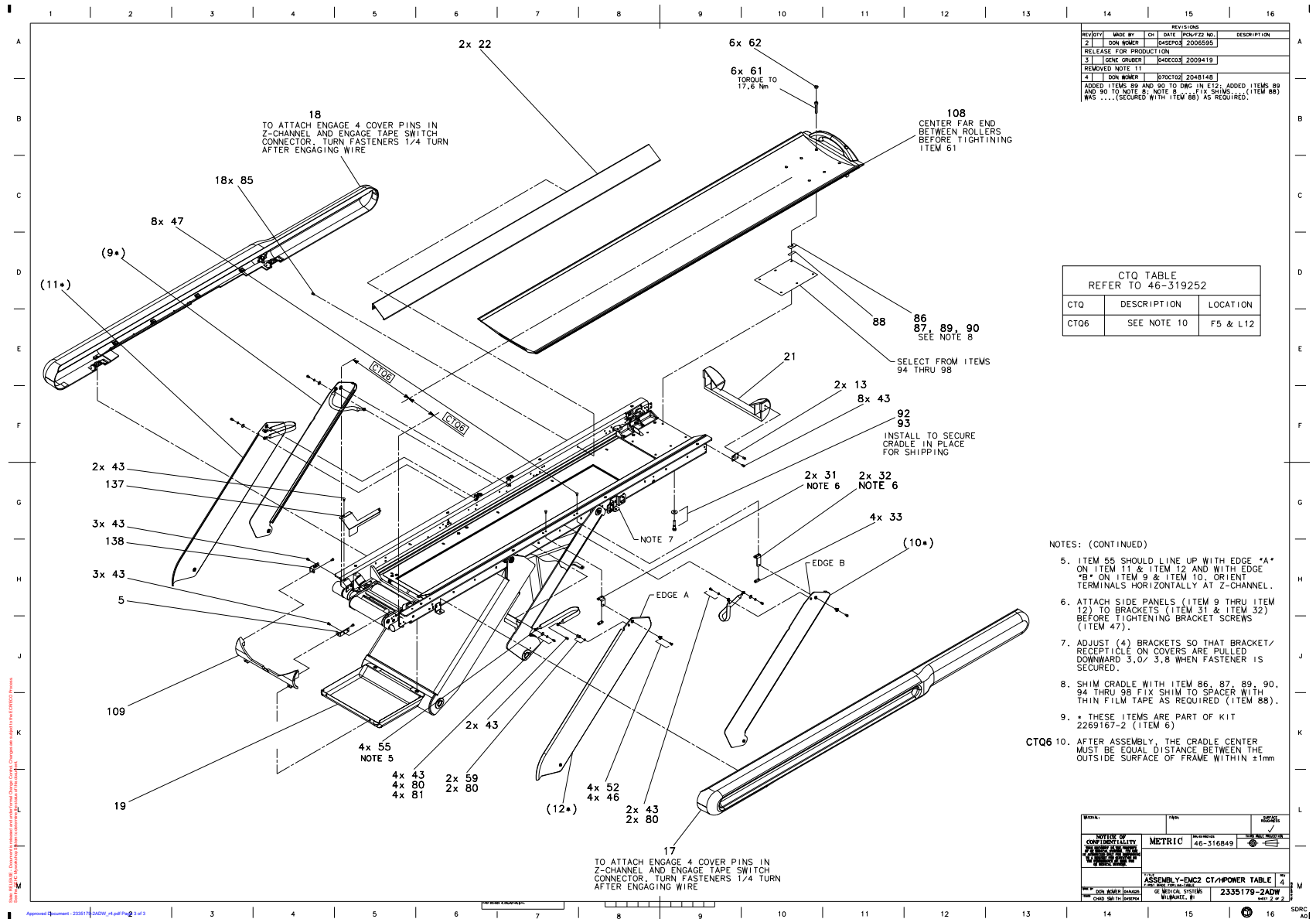


Figure 2-2 CT_HPOWER TABLE, H4-TABLE (2335179-2 Sheet 2, Rev 4)

MARK	NUMBER	QTY	FRU CODE	DESCRIPTION/NAME
5	2265868	1.0	Yes	BRACKET (REF 46-296820P1)
7	2271244	1.0	Yes	RIGHT BASE COVER ASM FOR H2 TABLE
8	2271247	1.0	Yes	LEFT BASE COVER ASM FOR H2 TABLE
16	2261683	1.0	Yes	COVER, ACTUATOR, (REF 46-296592P1)
17	2372371	1.0	Yes	COVER TABLE TOP LEFT <i>For further detail, see Section 1.2, beginning on page 44.</i>
18	2372372	1.0	Yes	COVER TABLE TOP RIGHT <i>For further detail, see Section 1.3, beginning on page 46.</i>
19	46-296594P1	1.0	Yes	DRIVE COVER
21	46-296679P2	1.0	Yes	ZEUS TABLE, REAR END COVER WITHOUT SWITCH OPENINGS
22	2261708	2.0	Yes	COVER GUARD, RAILS,(REF 46-296742P1)
29	2265851	2.0	Yes	BRACKET, LR SIDE PANEL (REF 2136285)
30	2265850	2.0	Yes	BRACKET, LF SIDE PANEL (REF 2136284)
31	2261669	2.0	Yes	BRKT,U-FRONT SIDE PNL, (REF 2138103)
32	2261668	2.0	Yes	BRKT, U-REAR SIDE PNL, (REF 2138101)
33	2265870	4.0	Yes	NUT PLATE (REF 46-297171P1)
38	2329950	1.0	Yes	CHANNEL,COVER SUPPORT
43	2146815-2	26.0	Yes	10-32 X 3/8 HEX SOC BUTTON HD SST MA
46	46-208562P3	4.0	Yes	SCREW SCREW OLD STL F70B5A2 ZINC PL HT TR FOR HYD EMB
47	46-208562P20	13.0	Yes	SCREW SCREW OLD STL F70B5A2 ZINC PL HT TR FOR HYD EMB N646P16010
52	2265882	8.0	Yes	SIDE PIVOT BUSHING (REF 46-297552P1)
55	46-297155G1	4.0	Yes	ZEUS TABLE, 9~ LONG CABLE
59	2261690	2.0	Yes	HEX STDF,9.5MM TAP,(REF 46-297596P1)
61	46-170498P23	6.0	Yes	SCREW SCREW OLD F70B5A2 ZINC PL HT TR FOR HYD EMB
62	46-221523P10	6.0	Yes	HOLE DIA 0.437 MAT~L THK .125 MAX BUTTON
63	46-170012P63	2.0	Yes	0010-32 HEX .375 NUT HT .239 STL ZINC PL ESNA 21NM-02
71	46-297695P1	2.0	Yes	COTTER PIN

Table 2-2 CT_Hpower Table, H4-Table (2335179-2 BOM, rev 9)

MARK	NUMBER	QTY	FRU CODE	DESCRIPTION/NAME
72	46-297678P1	1.0	Yes	HINGES
73	2265878	1.0	Yes	PIN (REF 46-297676P1)
74	46-170490P50	1.0	Yes	SPRING-INCH EXTENSION 4 INCHES .65 I FREE LG 4.00 MUSIC WIRE RATE-LB/IN 1.2
80	46-220181P5	8.0	Yes	WASHER #10 (.190) SCREW SIZE, ID .194-.202 OD .334, WIDTH .062 THK .047, STEEL ZINC PLT
81	12-276	4.0	Yes	ID 0.2040 OD 0.5630 THK .0478 STL F70B5A
85	2146815-2	18.0	Yes	10-32 X 3/8 HEX SOC BUTTON HD SST MA
86	2265863	3.0	Yes	SHIM 0.80MM (REF 46-196354P1)
87	2265863-2	3.0	Yes	SHIM 0.40MM (REF 46-196354P4)
88	46-170106P1	0.0	Yes	DBL COATED FILM .007 THK 1.0W
92	1000904P358	1.0	Yes	ID 0.380 OD 1.000 THK .094 B4B33A F70D9 .0001/.0002
98	2265861-5	1.0	Yes	SPACER PLT 1.60MM (REF 46-327022P5)
100	46-208561P147	5.0	Yes	SCREW SCREW OLD F70BIAR ZINC PL HT TR FOR HYD EMB
103	2265845	5.0	Yes	PAD, LEVELING (REF 2105872)
108	2115992-5	1.0	Yes	METALLESS CRADLE YMS METALLESS CRADLE WITH RATING PLT AND KEEPER_FOR SELF-CATCHING LATCH <i>For further detail, see Section 1.4, beginning on page 48.</i>
109	2117299	1.0	Yes	METALLESS CRADLE COMPATIBLE FRONT END COVER FOR HSA TABLE, BACKWARD COMPATIBLE WITH ALL ZEUS TABLES
117	2117390-2	1.0	Yes	CE Compliance and WEEE Labels
118	2132620	1.0	Yes	EMC LABEL CLASS A GROUP 1
119	2103580-12	8.0	Yes	SCREW COUNTERSUNK HEA 6 MM 12 MM CAP SCREWS BLACK OXIDE, STEEL
120	46-328417P12	2.0	Yes	SCREW HEXAGON SOCKET 6 MM 12 MM ZINC PLATED, STEEL
134	46-303268P1	1.0	Yes	PRODUCT LOCATOR CARD FORM FOR RATING PLATES, PRINTED BY DUPLITECH
137	2343484	1.0	Yes	COVER, CRADLE ENCODER
138	2348433	1.0	Yes	BRACKET, COVER MOUNTING-RIGHT SIDE
140	P9140ET	1.0	Yes	NAME PLATE

Table 2-2 CT_Hpower Table, H4-Table (2335179-2 BOM, rev 9)

MARK	NUMBER	QTY	FRU CODE	DESCRIPTION/NAME
141	46-302200P7	1.0	Yes	SERIAL #, MODEL# DESCRIPTION & MANUFACTURED DATE 2.25 X 1.40 PLATE
146	46-208562P53	2.0	Yes	SCREW SCREW OLD AFM/CFM SYSTEMS WITH THE ONE INCH SPACER BLOCK
6	2269167-2	1.0	No	SIDE PANEL KIT FOR H2 LCC CATHAY TBL <i>For further detail, see Section 1.1, beginning on page 43.</i>
13	2261673	2.0	No	BKT, REAR COVER, (REF 46-296832P1)
89	5118592	3.0	No	SPACER 01 BASE
90	5127957	3.0	No	CARRIAGE SHIM02 Positioning GT
93	2265862	1.0	No	BOLT, SHIPPING (REF 2184717)
94	2265861	0.0	No	SPACER PLT 0.50MM (REF 46-327022P1)
95	2265861-2	0.0	No	SPACER PLT 0.80MM (REF 46-327022P2)
96	2265861-3	0.0	No	SPACER PLT 1.00MM (REF 46-327022P3)
97	2265861-4	0.0	No	SPACER PLT 1.20MM (REF 46-327022P4)
101	2265840	5.0	No	ADJUSTER, LEVELING PAD (REF 2105871)
102	2265846	5.0	No	LOCK RING (REF 2106207) DIMENSIONS 1.5-12 THDS, 0.25 THK
116	2394485	1.0	No	HPOWER TABLE ETL LABEL
121	2335178-2	1.0	No	Assembly-EMC_CT_Hpower Table Sub, H4-Table <i>For further detail, see Section 1.5, beginning on page 50.</i>
122	2384711-3	1.0	No	Rating Plate- EMC CT_Hpower Table Assembly
126	2148658	1.0	No	ESD GROUND STRAP, BRAIDED FLAT WIRE

Table 2-2 CT_Hpower Table, H4-Table (2335179-2 BOM, rev 9)

1.1 Side Panel Kit (2269167-2)

FRU = NO

MARK	NUMBER	QTY	FRU CODE	DESCRIPTION/NAME
9	2259861-2	1.000	Yes	SIDE PANEL,RT REAR, HELIO
10	2259862-2	1.000	Yes	SIDE PANEL,LEFT REAR, HEL
11	2259863-2	1.000	Yes	SIDE PANEL,RIGHT FRONT, H
12	2259864-2	1.000	Yes	SIDE PANEL,LEFT FRONT, HE

Table 2-3 Side Panel Kit for H2 LCC Cathay Table (2269167-2 BOM, rev 0)

1.2 Cover Table Top - Left (2372371)

FRU = YES

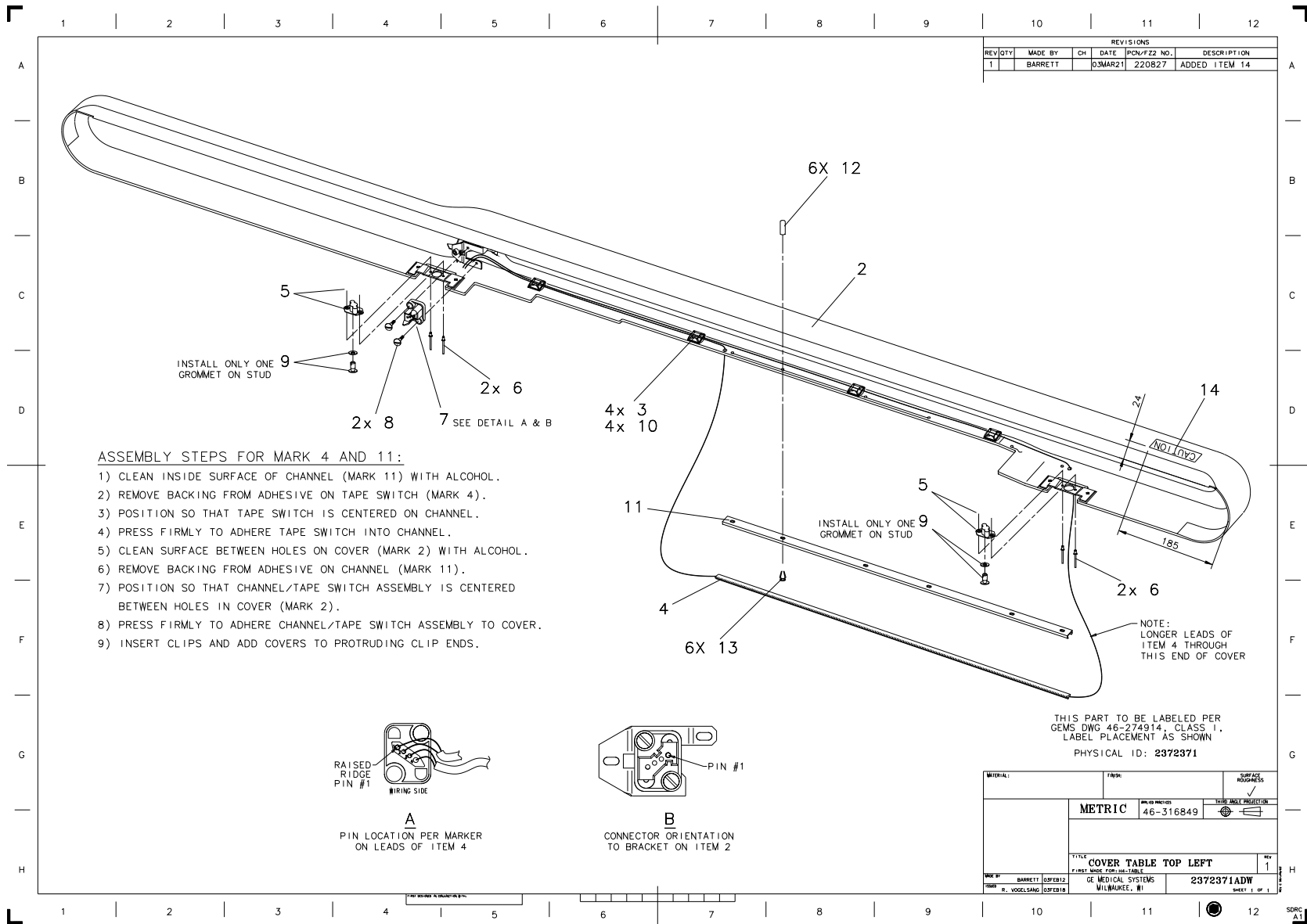


Figure 2-3 Cover Table Top - Left (2372371, sheet 1, rev 1)

MARK	NUMBER	QTY	FRU CODE	DESCRIPTION/NAME
3	46-208747P1	4.000	Yes	ADHESIVE MOUNT - CABLE TIE PANDUIT CORP, ABMM-A(STYLE A)
4	46-297698P3	1.000	Yes	27~ HIGH PROFILE BEAD, RIBBON SWITCH
5	46-297329P1	2.000	Yes	1-4 TURN RECEPTACLE WITH TWO SPACERS FLOATING .074 ALL DIRECTIONS .261 DIA. MOUNTING HOLES
6	46-220186P20	4.000	Yes	1/8~ 120 DEGREE COUNTERSUNK POPRIVET .129-.133,GRIP RANGE .126-.187 USM CORPORATION PART # AK4385
7	46-297721P1	1.000	Yes	4-POS PLUG HOUSING (DRAWER CONNECT). PLUG HOUSING, DRAWER CONNECTOR. (DWG REV 7/92, JFK - OK).
8	46-158905P16	2.000	Yes	MOUNTING SCREW FOR DRAWER CONNECTOR. SAE 6-32 THD, .966~ L, STAINLESS STL MOUNTING SCREW FOR FLOATING DRAWER C ONNECTORS. SAE 6-32 THD. (DWG REV 7/92, JFK - OK).
9	46-297328P2	2.000	Yes	1/4 TURN STUD AND TWO GROMMETS STUD LENGTHS; A=.500~ B=.330~
10	46-208758P1	4.000	Yes	3.62~ X .094~ CABLE TIE 1/16~ TO 5/8~ WIRE BUNDLE RANGE 18LB TENSILE STRENGTH, NYLON MATR'L.
11	2372346	1.000	Yes	CHANNEL TAPESWITCH
14	2199652	1.000	Yes	P9235LZ LABEL
2	2372348	1.000	No	COVER, TOP LEFT
12	2363367	6.000	No	VINYL CAP 1/8 INCH
13	2363369	6.000	No	T SHAPE HEAD STEEL CLIP

Table 2-4 Cover Table Top - Left (2372371 BOM, rev 1)

1.3 Cover Table Top - Right (2372372)

FRU = YES

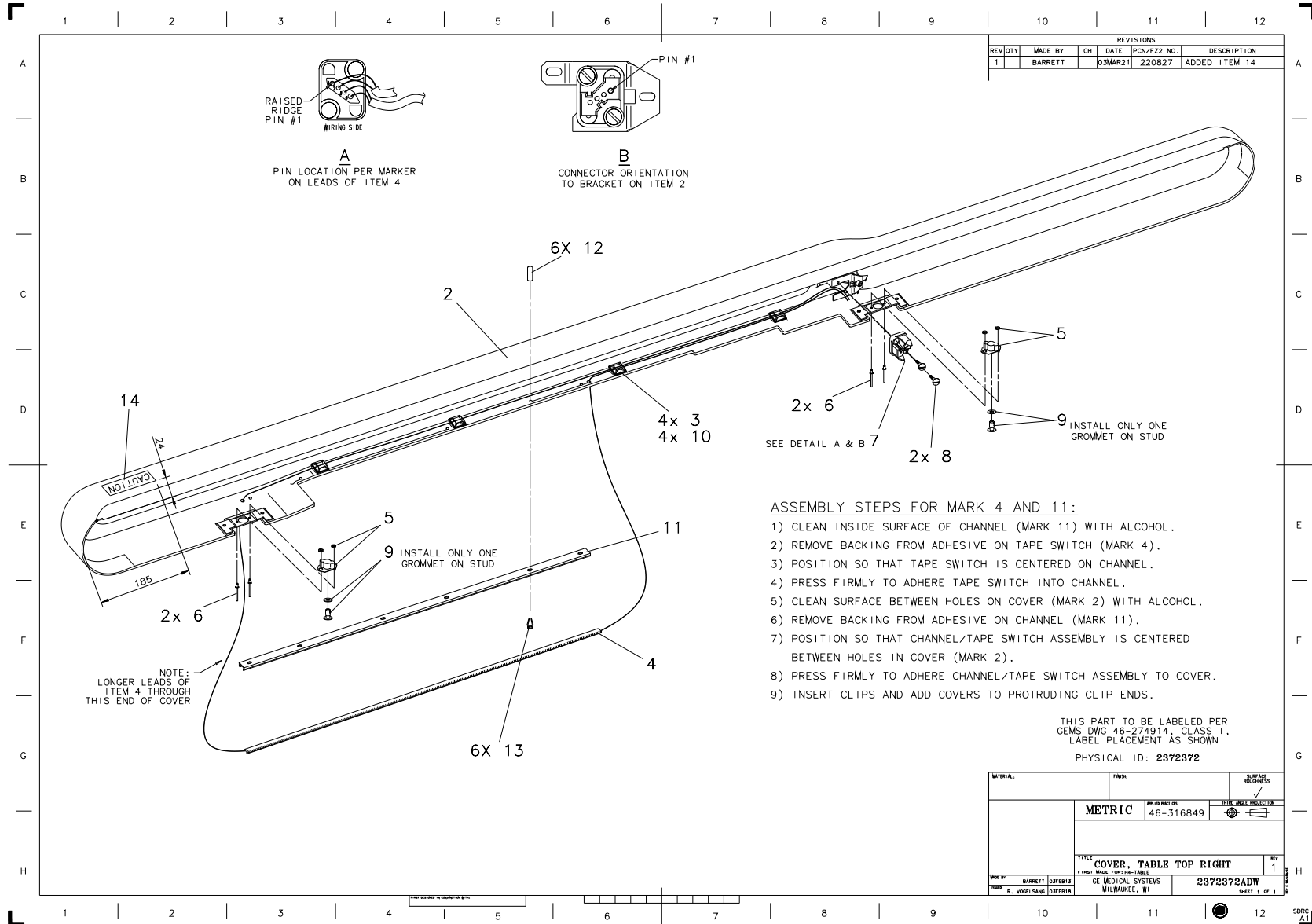


Figure 2-4 Cover Table Top - Right (2372372, sheet 1, rev 1)

MARK	NUMBER	QTY	FRU CODE	DESCRIPTION/NAME
3	46-208747P1	4.000	Yes	ADHESIVE MOUNT - CABLE TIE PANDUIT CORP, ABMM-A(STYLE A)
4	46-297698P3	1.000	Yes	27~ HIGH PROFILE BEAD, RIBBON SWITCH
5	46-297329P1	2.000	Yes	1-4 TURN RECEPTACLE WITH TWO SPACERS FLOATING .074 ALL DIRECTIONS .261 DIA. MOUNTING HOLES
6	46-220186P20	4.000	Yes	1/8~ 120 DEGREE COUNTERSUNK POPRIVET .129-.133,GRIP RANGE .126-.187 USM CORPORATION PART # AK4385
7	46-297721P1	1.000	Yes	4-POS PLUG HOUSING (DRAWER CONNECT). PLUG HOUSING, DRAWER CONNECTOR. (DWG REV 7/92, JFK - OK).
8	46-158905P16	2.000	Yes	MOUNTING SCREW FOR DRAWER CONNECTOR. SAE 6-32 THD, .966~ L, STAINLESS STL MOUNTING SCREW FOR FLOATING DRAWER C ONNECTORS. SAE 6-32 THD. (DWG REV 7/92, JFK - OK).
9	46-297328P2	2.000	Yes	1/4 TURN STUD AND TWO GROMMETS STUD LENGTHS; A=.500~ B=.330~
10	46-208758P1	4.000	Yes	3.62~ X .094~ CABLE TIE 1/16~ TO 5/8~ WIRE BUNDLE RANGE 18LB TENSILE STRENGTH, NYLON MATR'L.
11	2372346	1.000	Yes	CHANNEL TAPESWITCH
14	2199652	1.000	Yes	P9235LZ LABEL
2	2372351	1.000	No	COVER, TOP RIGHT
12	2363367	6.000	No	VINYL CAP 1/8 INCH
13	2363369	6.000	No	T SHAPE HEAD STEEL CLIP

Table 2-5 Cover Table Top - Right (2372372 BOM, rev 1)

1.4 METALLESS CRADLE (2115992-5)

FRU = YES

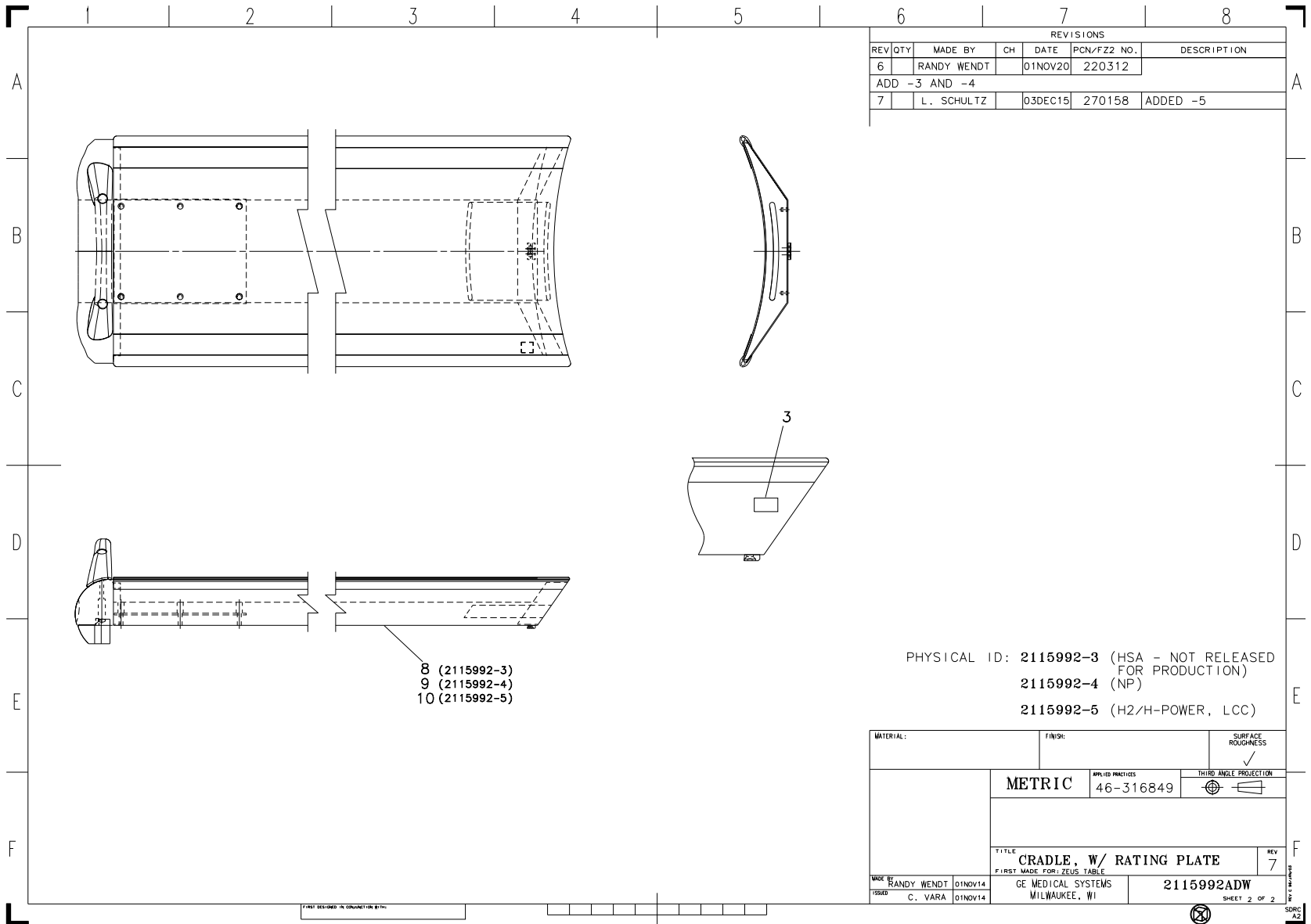


Figure 2-5 Metalless Cradle (2115992-5 refer to 2115992, sheet 2, rev 7)

MARK	NUMBER	QTY	FRU CODE	DESCRIPTION/NAME
4	2268003	2.0	Yes	10-32 X .437 LONG, FLAT HEAD, CLOSED SLOT SCREW. INJECTION MOLDED MATERIAL, FIBER/LITE PLFC. FOR USE ON METALLESS CRADLE AND METALLESS ACCESSORIES
5	2222889-2	1.0	Yes	KEEPER FOR SELF-CATCHING LATCH ASM
7	46-303268P1	1.0	Yes	PRODUCT LOCATOR CARD FORM FOR RATING PLATES, PRINTED BY DUPLITECH
3A	2285525-3	1.0	No	RATING PLATE
10	2390141	1.0	No	CRADLE ASSEMBLY

Table 2-6 Metalless Cradle (2115992-5 BOM, rev 1)

1.5 Table Subassembly - H Power (2335178-2)

FRU = NO

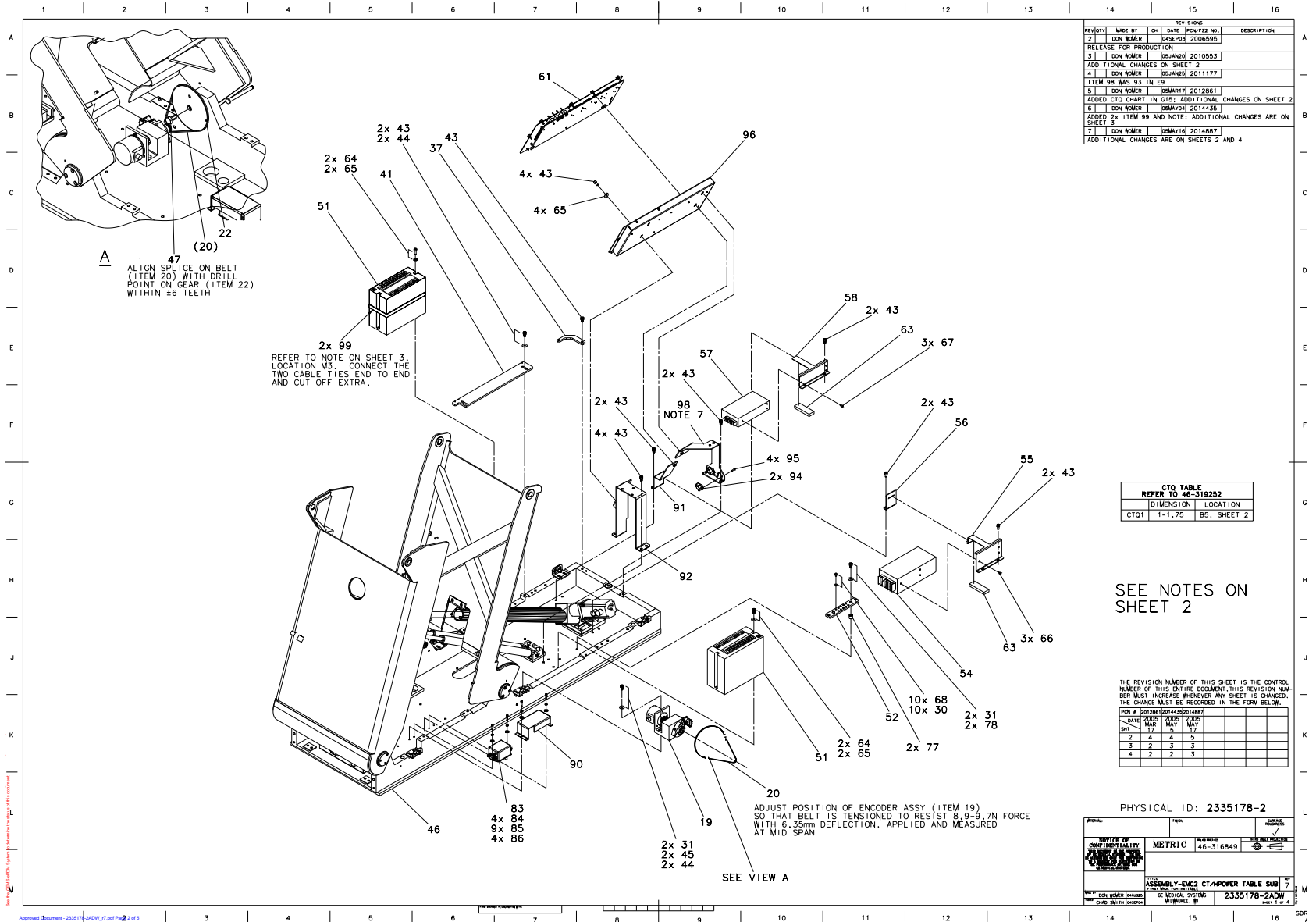


Figure 2-6 Table Subassembly (2335178-2, sheet 1, rev 7)

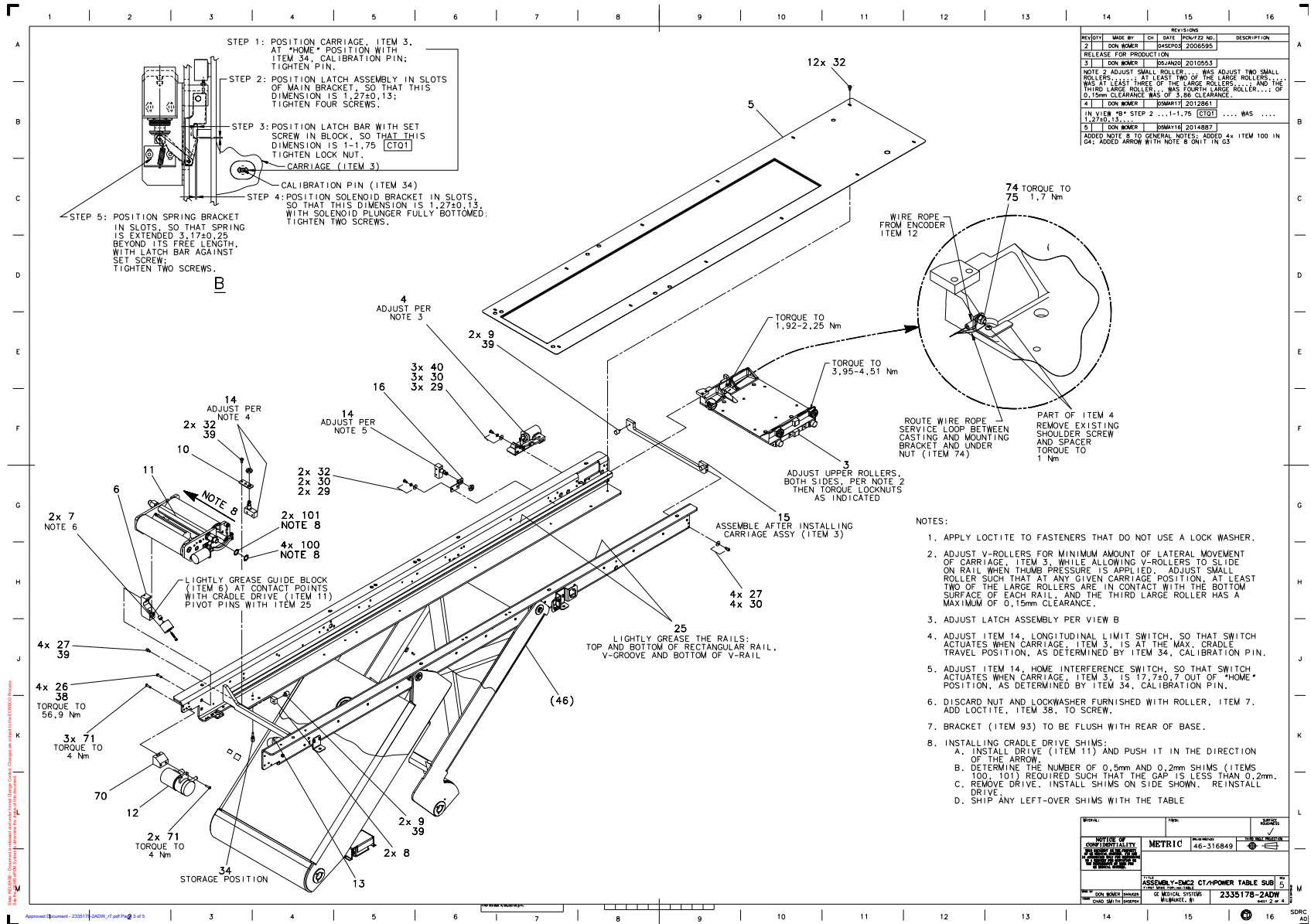


Figure 2-7 Table Subassembly (2335178-2 sheet 2, rev 5)

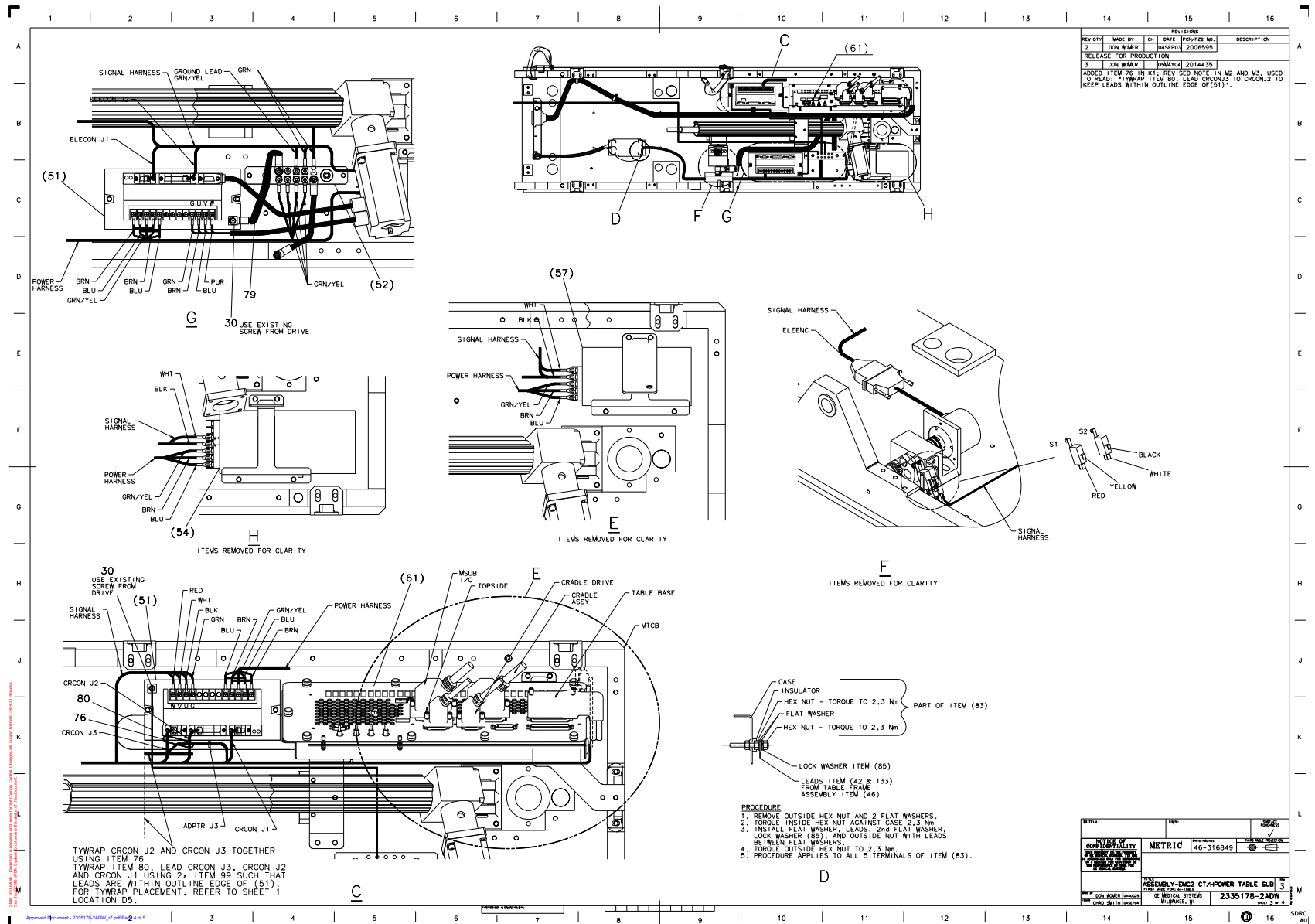


Figure 2-8 Table Subassembly (2335178-2, sheet 3, rev 3)

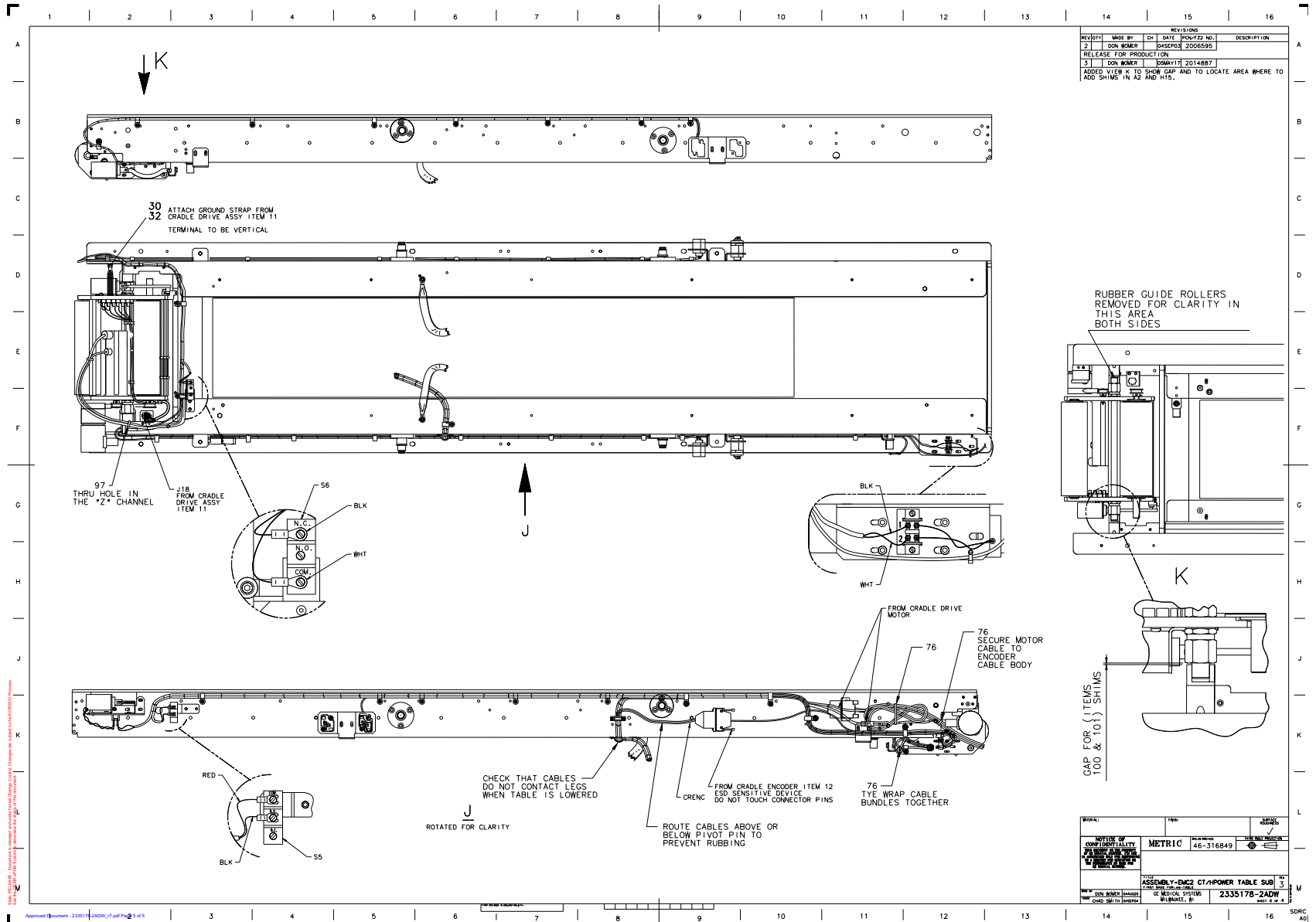


Figure 2-9 Table Subassembly (2335178-2, sheet 4, rev 3)

MARK	NUMBER	QTY	FRU CODE	DESCRIPTION/NAME
3	2269168-2	1.000	Yes	CARRIAGE ASSEMBLY FOR HPO {For further detail, see Section 1.5.1, beginning on page 58. }
4	2269177	1.000	Yes	LATCH ASSEMBLY FOR CATHAY {For further detail, see Section 1.5.2, beginning on page 60. }
7	46-296370P1	2.000	Yes	ROLLER
11	2339120	1.000	Yes	CRADLE DRIVE ASSY - H PWR {For further detail, see Section 1.5.3, beginning on page 62. }
12	2342727-3	1.000	Yes	ENCODER, CRADLE, DANAHER
14	46-136334P23	2.000	Yes	SPDT, 15A @125/250VAC BAS
19	2337217-3	1.000	Yes	ENCODER ASSY, ELEVATION {For further detail, see Section 1.5.4, beginning on page 68. }
20	46-170047P7	1.000	Yes	125 PITCHES 19.635 LENG
29	12-276	5.000	Yes	ID 0.2040 OD 0.5630 THK .
32	2146815-2	20.000	Yes	10-32 X 3/8 HEX SOC BUTTO
34	2265877	1.000	Yes	CALIBRATION PIN (REF 46-2
37	2261701	1.000	Yes	BAR, CALIBRATION, (REF 46
41	2261724	1.000	Yes	CAL PLATE FOR H2 LCC CATH
51	2342729-3	2.000	Yes	H-POWER, SERVO AMP DRIVE
54	2258712-4	1.000	Yes	POWER SUPPLY AC-DC SINGLE
57	2258704	1.000	Yes	POWER SUPPLY AC-DC SINGLE
61	5263397	1.000	Yes	ASSEMBLY-MTCB-3 MOUNTING PANEL, HPOWER-TABLE
79	46-297155G1	2.000	Yes	ZEUS TABLE, 9" LONG CABLE
80	46-297155G4	1.000	Yes	GROUND CABLE_24" LONG
90	2380051	1.000	Yes	FILTER COVER
94	46-297329P2	2.0	Yes	1/4 TURN RECEPTACLE - FIXED.128~ DIA. MOUNTING HOLES
95	46-220186P20	4.0	Yes	1/8~ 120 DEGREE COUNTERSUNK POP RIVET .129-.133,GRIP RANGE .126-.187 USM CORPORATION PART # AK4385
97	46-208758P1	1.0	Yes	3.62~ X .094~ CABLE TIE 1/16~ TO 5/8~ WIRE BUNDLE RANGE 18LB TENSILE STRENGTH, NYLON MATR'L.

Table 2-7 Table Subassembly (2335178-2 BOM, rev 10)

MARK	NUMBER	QTY	FRU CODE	DESCRIPTION/NAME
99	46-208758P5	2.0	Yes	SELF LOCKING CABLE TIE
5	2261680	1.000	No	PLATE, TABLE TOP, (REF 46
6	2265867	1.000	No	BLOCK GUIDE ROLLER (REF 4
8	2261723	2.000	No	BLOCK, BUMPER, (REF 46-27
9	46-221597P2	4.000	No	MINOR VBM-3003 NAT RUBBER
10	2265854	1.000	No	PLATE, SWITCH (REF 46-278
13	2265867-2	1.000	No	WIDE GROOVE ROLLER
15	2261679	1.000	No	BRACE, REAR (REF 46-29681
16	2261698	1.000	No	BRACKET, SWITCH, (REF 46-
22	46-296626P1	1.000	No	LARGE GEAR
25	46-170623P2	AR	No	BLACK, HEAVY-DUTY LUBRICA
26	46-170498P54	4.000	No	SCREW
27	46-170498P13	8.000	No	SCREW
30	46-220181P5	23.000	No	WASHER #10 (.190) SCREW S
31	46-328417P15	4.000	No	SCREW HEXAGON SOCKET 6 MM
38	46-170684P2	AR	No	LOCTITE 271, 10CC BOTTLE
39	46-170686P2	AR	No	LOCTITE 242, 10CC
40	2146815	3.000	No	10-32 X 1/2 HEX SOC BUTTO
43	46-328417P12	16.000	No	SCREW HEXAGON SOCKET 6 MM
44	12-275	4.000	No	WASHER, ID .2656, OD.75,
45	46-328432P3	2.000	No	WASHER LOCK - SPRING 6.1
46	2335177-2	1.000	No	TABLE FRAME ASSY - H POWE {For further detail, see Section 1.5.5, beginning on page 72. }
47	46-170015P28	1.000	No	SCREW
52	2264567	1.000	No	BAR, WIRE GROUND (REF 46-
55	2346974	1.000	No	BRACKET - 24V PS
56	2346976	2.000	No	BRACKET - POWER SUPPLY CL
58	2346975	1.000	No	BRACKET - 5V PS

Table 2-7 Table Subassembly (2335178-2 BOM, rev 10) (Continued)

MARK	NUMBER	QTY	FRU CODE	DESCRIPTION/NAME
63	46-170171P22	AR	No	TAPE OLD
64	46-328417P13	4.000	No	SCREW HEXAGON SOCKET 6 MM
65	46-328430P3	4.000	No	WASHER PLAIN - NORMAL 6.4
66	46-328417P1	3.000	No	SCREW HEXAGON SOCKET 4 MM
67	46-328417P73	3.000	No	SCREW HEXAGON SOCKET 3 MM
68	46-170497P7	12.000	No	SCREW
69	46-170497P38	8.000	No	SCREW
70	2339118	1.000	No	BRACKET, CRADLE ENCODER M
71	46-170497P4	5.000	No	SCREW
74	46-328425P1	1.000	No	NUT HEXAGON 4 MM
75	46-328432P2	1.000	No	WASHER LOCK - SPRING 4.1
76	46-208758P3	4.000	No	7.31" X .184" SELF-LOCKIN
77	1000274P3	2.000	No	SPACER, 1/2" OD 9/32" ID
78	46-328431P2	2.000	No	WASHER PLAIN - LARGE 6.4
83	46-297335P3	1.000	No	16A, 250V 2-STAGE PWR LIN
84	46-328430P2	4.000	No	WASHER PLAIN - NORMAL 4.3
85	46-328432P2	9.000	No	WASHER LOCK - SPRING 4.1
86	46-328417P4	4.000	No	SCREW HEXAGON SOCKET 4 MM
87	46-328430P3	1.000	No	WASHER PLAIN - NORMAL 6.4
88	46-328432P3	1.000	No	WASHER LOCK - SPRING 6.1
89	46-328417P11	1.000	No	SCREW HEXAGON SOCKET 6 MM
91	5120914	1.0	No	BRACKET-MTCB ENCLOSURE_PWR SUPPLY MTG, CT HPOWER-TABLE
92	5120912	1.0	No	BRACKET-MTCB ENCLOSURE_CYL CVR MTG,CT HPOWER-TABLE
96	5120651	1.0	No	ENCLOSURE-MTCB EMC_EMI METAL- HPOWER-TABLE
98	5131051	1.0	No	BRACKET-MCTB ENCLOSURE REAR MOUNTING, HPOWER-TABLE
100	5139250	4.0	No	WASHER-16MMIDX22MMODX0,5 THICK,STAINLESS STEEL SHIM, HPOWER-TABLE
101	5139250-2	2.0	No	WASHER-16MMID X 22MMOD X 0.2 THICK BLUED-TEMPERED STEEL SHIM, HPOWER-TABLE

Table 2-7 Table Subassembly (2335178-2 BOM, rev 10) (Continued)

1.5.1 Carriage Assembly (2269168-2)

FRU = 1

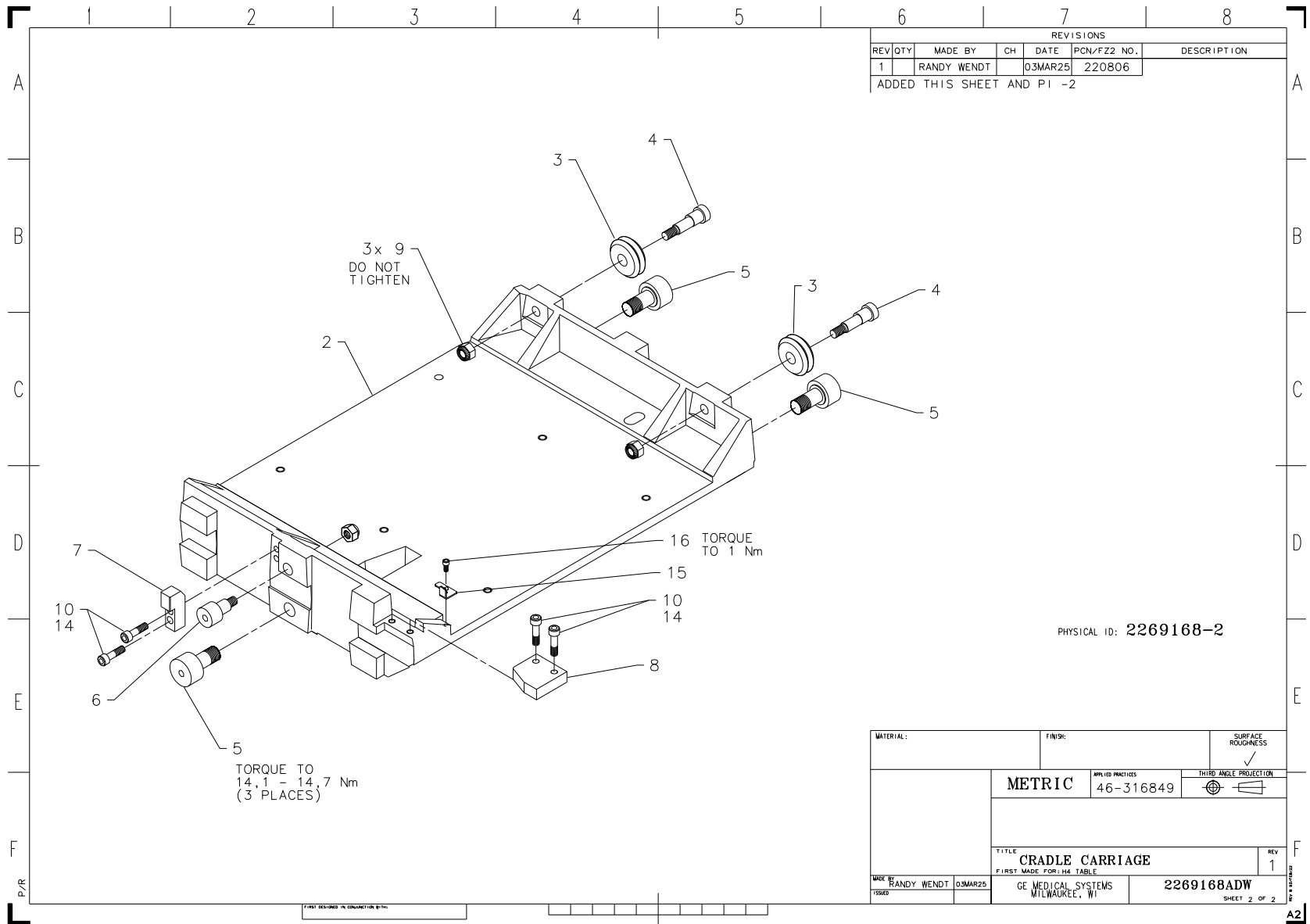


Figure 2-10 Carriage Assembly (2269168-2, sheet 2, rev1)

MARK	NUMBER	QTY	FRU CODE	DESCRIPTION/NAME
3	46-218193P1	2.000	Yes	WHEEL DIA 01.21 WIDTH 0.4
5	46-208580P6	3.000	Yes	CAM FOLLOWER
6	46-208580P19	1.000	Yes	CAM FOLLOWER
9	46-170012P77	3.000	Yes	LOCK NUT, 1/4-28, .437 X .312
10	46-170498P2	4.000	Yes	SCREW
14	46-170686P2	0.000	Yes	LOCTITE 242, 10CC 12 MONTH SHELF LIFE FROM DATE OF SHIPMENT FROM THE MANUFACTURER
15	2356591	1.000	Yes	BRACKET, CRADLE ENCODER D
16	46-170497P55	1.000	Yes	SCREW SCREW OLD HD STL F65D6A BLACK OXIDE

Table 2-8 Carriage Assembly (2269168-2 BOM, rev 1)

1.5.2 Latch Assembly (2269177)

FRU = 1

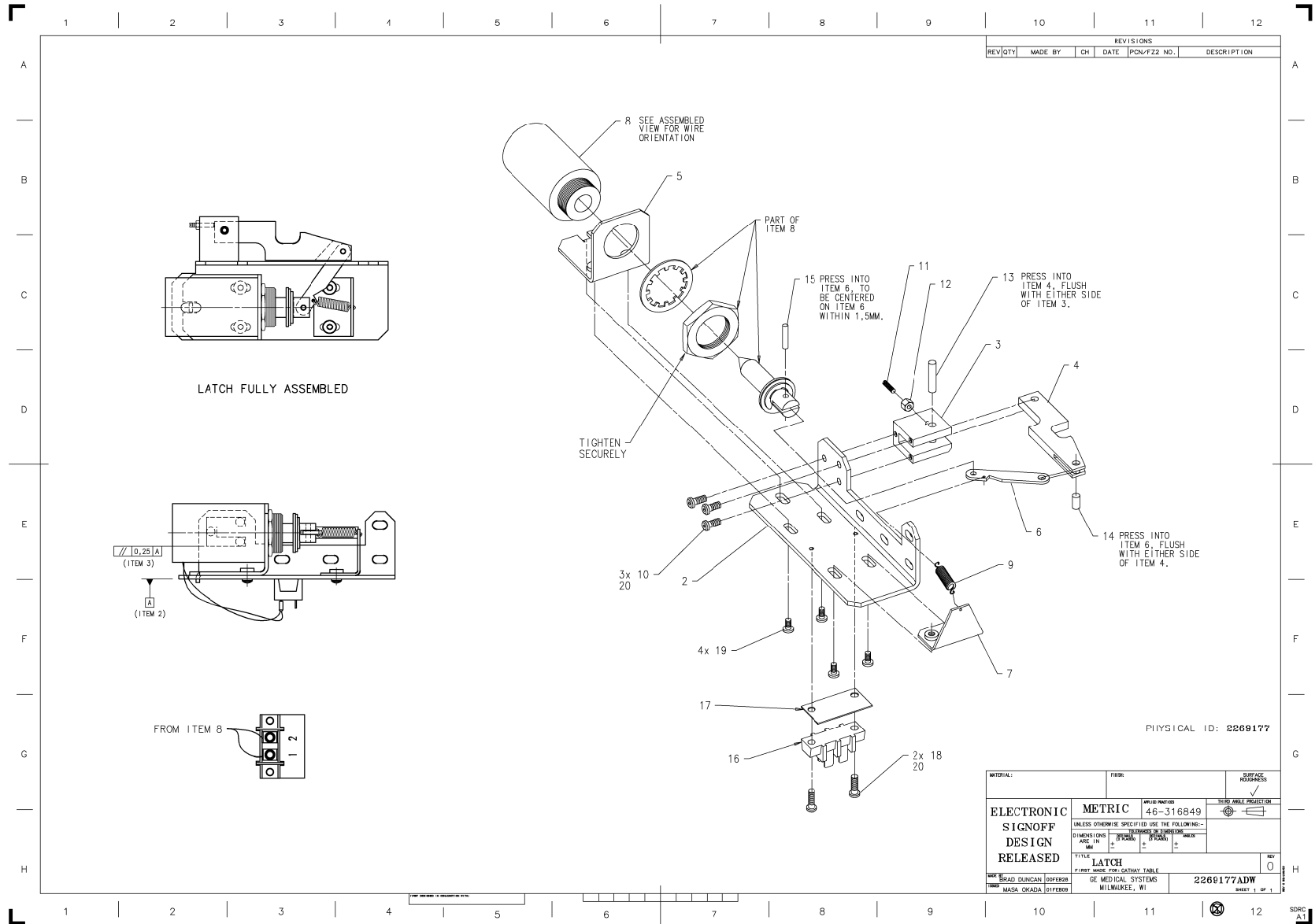


Figure 2-11 Latch Assembly (2269177, sheet 1, rev 0)

MARK	NUMBER	QTY	FRU CODE	DESCRIPTION/NAME
8	46-296972G1	1.000	1	SOLENOID ASM

Table 2-9 Latch Assembly (2269177 BOM, rev 0)

1.5.3 Cradle Drive Assembly (2339120)

FRU = 1

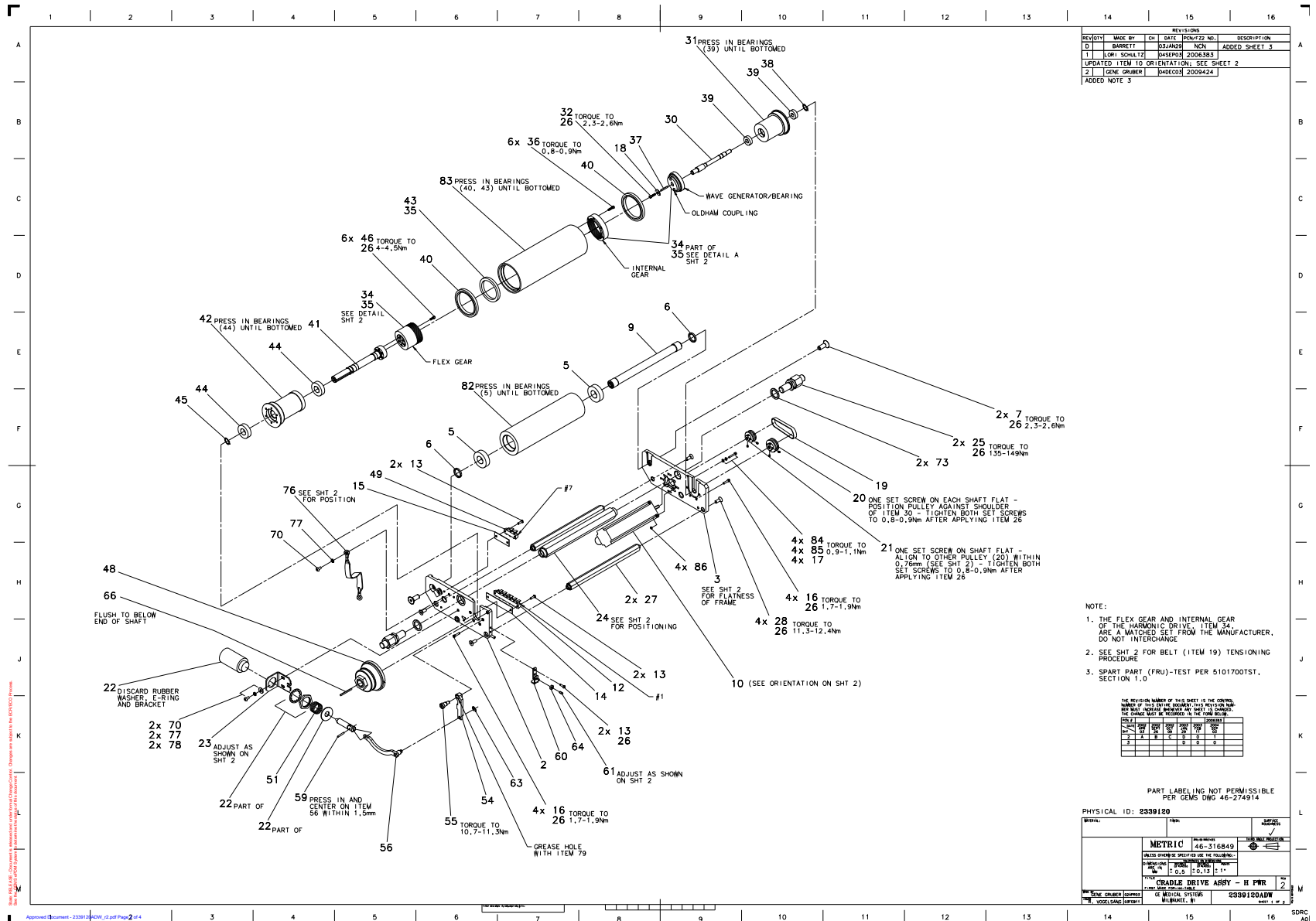


Figure 2-12 Cradle Drive Assembly (2339120, sheet 1, rev 2)

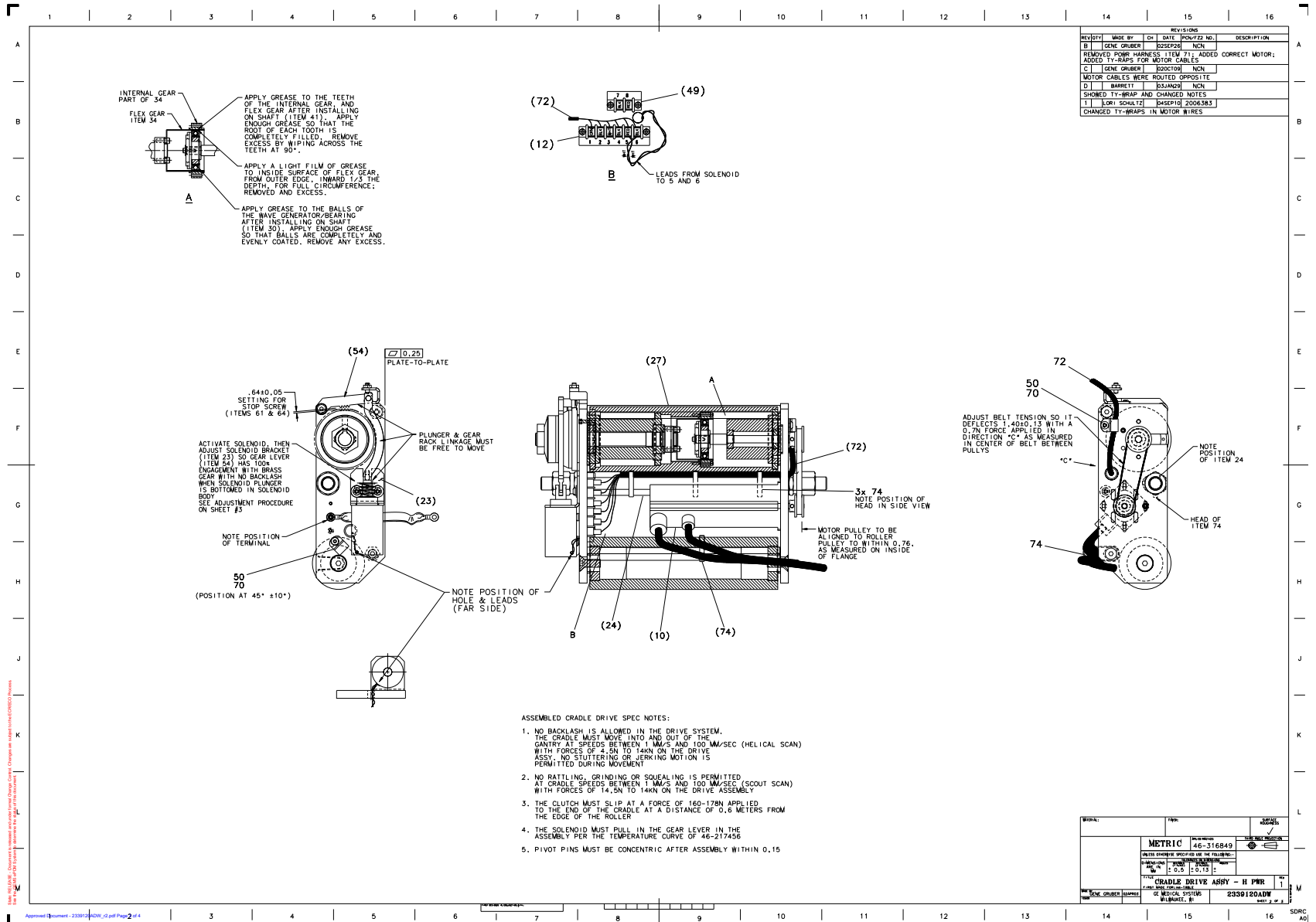


Figure 2-13 Cradle Drive Assembly (2339120, sheet 2, rev 1)

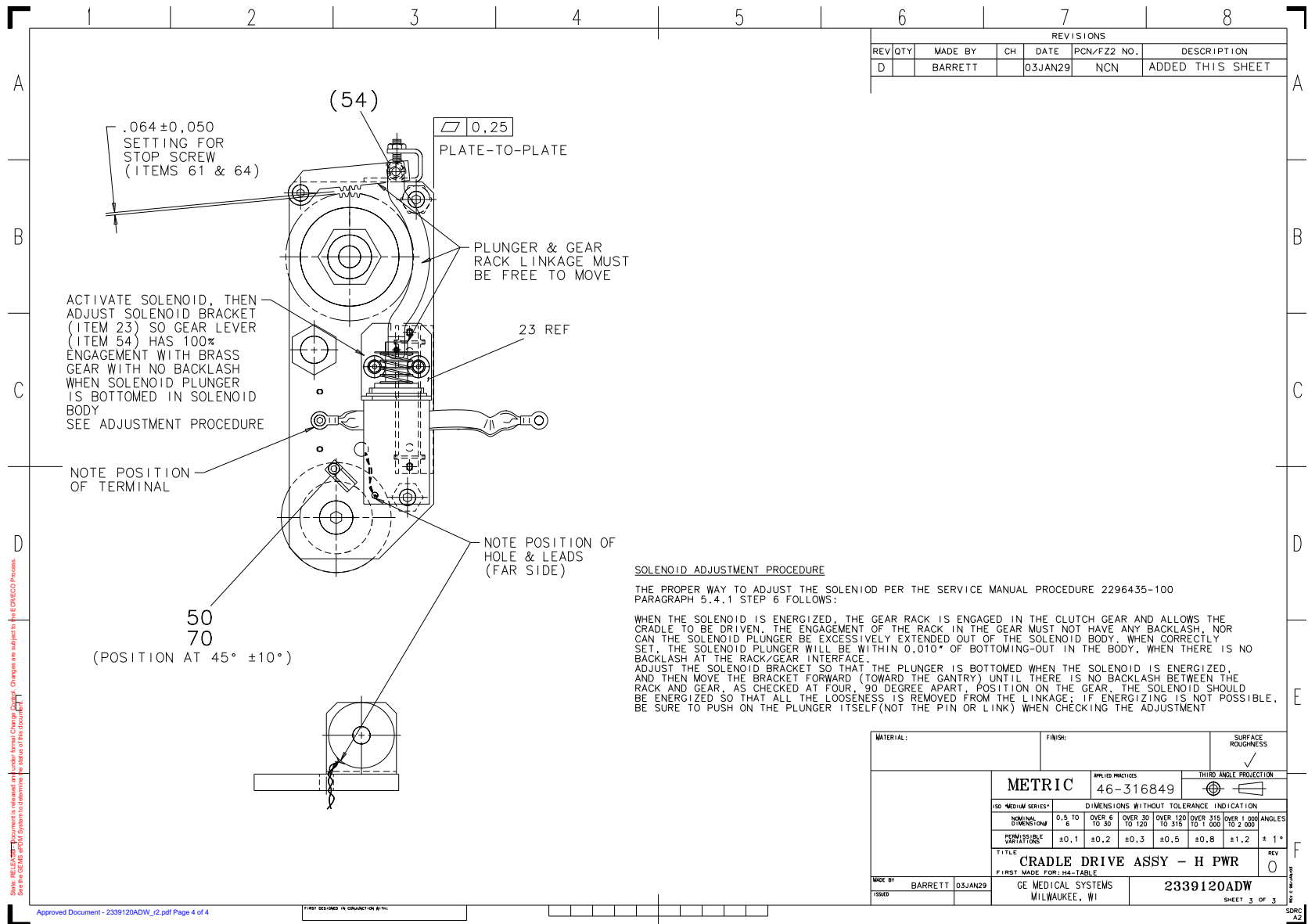


Figure 2-14 Cradle Drive Assembly (2339120, sheet 3, rev 0)

MARK	NUMBER	QTY	FRU CODE	DESCRIPTION/NAME
5	46-136282P30	2.0	Yes	BEARING BALL, SINGLE RO 20 MM 42 MM ID 0.7874~ OD 1.6535~ WIDTH 0.4724~2 SHIELDS, ABEC 1, STL SAE 52100 0.0002~-0.0008~ RAD. PLAY 09 BALLS, 1/4~ DIA, REF.
6	46-212989P2	2.0	Yes	WASHER
7	46-208562P8	2.0	Yes	SCREW 3/8X16X1~ FLAT HEAD STL F70B5A2 ZINC PL HT TR FOR HYD EMB
10	2342731	1.0	Yes	H-POWER, AC CRADLE MOTOR
13	46-170497P38	6.0	Yes	SCREW SCREW OLD HD STL F70B5A2 ZINC PL HT TR OR HYD EMB N647P13008
14	403B320P86	1.0	Yes	NUMBERS 1 THU 6, LEFT TO RIGHT (DWG REV 3/91, TK)
16	46-170498P80	8.0	Yes	SCREW SCREW OLD F70B5A2 ZINC PL HT TR FOR HYD EMB
17	46-313575P1	4.0	Yes	HIGH COLLAR LOCK WASHER FOR M3 SCREW
18	1000904P116	1.0	Yes	ID 0.1495 OD 0.6250 THK .0598 STL B8A4B2 F70B5A
19	46-221532P18	1.0	Yes	PITCH 1/5 WIDTH 00.250 LG 009.600 NEOPRENE EXTRA LIGHT DUTY
20	46-170576P7	1.0	Yes	PITCH 1/5 TEETH 0L6 FACE 0.44 ALUM OD 00.999 ID 0.3125 LG 00.560 STOCK DRIVE 6A3-16DF02510
21	46-170576P6	1.0	Yes	PITCH 1/5 TEETH 013 FACE 0.44 ALUM OD 00.808 ID 0.250 LG 00.687 STOCK DRIVE 6A3-13DF02508
22	46-296972G1	1.0	Yes	SOLENOID ASM
26	46-170686P2	0.0	Yes	LOCTITE 242, 10CC 12 MONTH SHELF LIFE FROM DATE OF SHIPMENT FROM THE MANUFACTURER
28	46-208562P7	4.0	Yes	SCREW SCREW OLD STL F70B5A2 ZINC PL HT TR FOR HYD EMB
30	2265826	1.0	Yes	SHAFT (REF 46-296048P1)
32	46-170498P79	1.0	Yes	SCREW SCREW OLD F70B5A2 ZINC PL HT TR FOR HYD EMB
36	46-170498P115	6.0	Yes	SCREW SCREW OLD F65D6A BLK OX
38	46-220179P8	1.0	Yes	EXT AXIAL MOUNT 0.375 SHAFT DIA 0.338 FREE DIA .025 THK STL OIL DIP N900P37 BASIC
39	46-136282P33	2.0	Yes	BEARING ID 0.3750~ OD 0.8750~ WIDTH 0.2812~2 SHIELDS, ABEC 1, STL SAE 52100 0.0001~-0.0005~ RAD. PLAY07 BALLS, 5/32~ DIA, REF.
40	46-136294P9	2.0	Yes	BEARING ID 2.3125 OD 2.8750 WIDTH 0.281 2 SHIELDS ABEC-1 STL SAE 52100.0008-.0018 RAD. PLAY

Table 2-10 Cradle Drive Assembly (2339120 BOM, rev 6)

MARK	NUMBER	QTY	FRU CODE	DESCRIPTION/NAME
43	46-136303P10	1.0	Yes	BEARING ID 2.00 OD 2.500 WIDTH .250 KAYDON TYPE C KA020CP0
44	46-136282P62	2.0	Yes	BEARING BALL, SINGLE RO 17 MM 35 MM ID 0.6693~ OD 1.3780~ WIDTH 0.3937~2 SEALS, ABEC 1, STL SAE 52100 0.0001~-0.0007~ RAD. PLAY 10 BALLS, 3/16~ DIA, REF.
45	46-220179P34	1.0	Yes	EXT AXIAL MOUNT 0.669 SHAFT DIA 0.626 FREE DIA 0.037 THK STEEL-OIL DIP
46	46-170498P84	6.0	Yes	SCREW, CAP SOCKET HEAD 8-32 X .50 F70B5A2 ZINC PL HT TR FOR HYD_EMB
48	46-296368G1	1.0	Yes	No description provided
50	46-208718P2	2.0	Yes	5/16 ID LOOP TYPE TA MFG CO. TA713D5
51	509A859P69	1.0	Yes	SPRING-INCH COMPRESSION 1.84 INCHES FREE LGTH 1.84 5 ACT COILS RATE-LB/IN 1.5 RH OR LH WOUND
55	46-297820P1	1.0	Yes	SHOULDER SCREW
59	46-311873P8	1.0	Yes	PIN, M3 X 18
61	46-221560P4	1.0	Yes	SCREW SCREW OLD PT SST 18-8
63	46-220277P6	1.0	Yes	EXT RADIAL MOUNT 0.219 SHAFT DIA 0.185 FREE DIA .025 THK STL BLK PHOS N910P21 E-RING WALDES TRUARC #X5133-21
64	46-170012P63	1.0	Yes	0010-32 HEX .375 NUT HT .239 STL ZINC PL ESNA 21NM-02
70	46-170497P7	5.0	Yes	SCREW SCREW OLD HD STL F70B5A2 ZINC PLT HT TR FOR HYD EMB
72	46-297118G1	1.0	Yes	CRDR SIG CBL
74	46-208758P3	4.0	Yes	7.31~ X .184~ SELF-LOCKING CABLE TIE 1/16~ TO 1-3/4~ WIRE BUNDLE RANGE .50LB TENSILE STRENGTH, NYLON MATR~L.
76	46-297155G1	1.0	Yes	ZEUS TABLE, 9~ LONG CABLE
77	46-220181P5	3.0	Yes	WASHER #10 (.190) SCREW SIZE, ID .194-.202 OD .334, WIDTH .062 THK .047, STEEL ZINC PLT
78	12-276	2.0	Yes	ID 0.2040 OD 0.5630 THK .0478 STL F70B5A
79	46-170623P2	0.0	Yes	BLACK, HEAVY-DUTY LUBRICATING PASTE. (1 PINT CAN) SHELF LIFE, UNDER NORMAL STORAGE CONDITIONS, HAS NO KNOWN LIMITS. (DWGREV 6/92, JFK - OK).
84	46-328417P504	4.0	Yes	SCREW HEXAGON SOCKET 3 MM 20 MM
85	46-328430P9	4.0	Yes	WASHER PLAIN - NORMAL 3.2 MM 7 MM
86	46-328425P10	4.0	Yes	NUT HEXAGON 3 MM

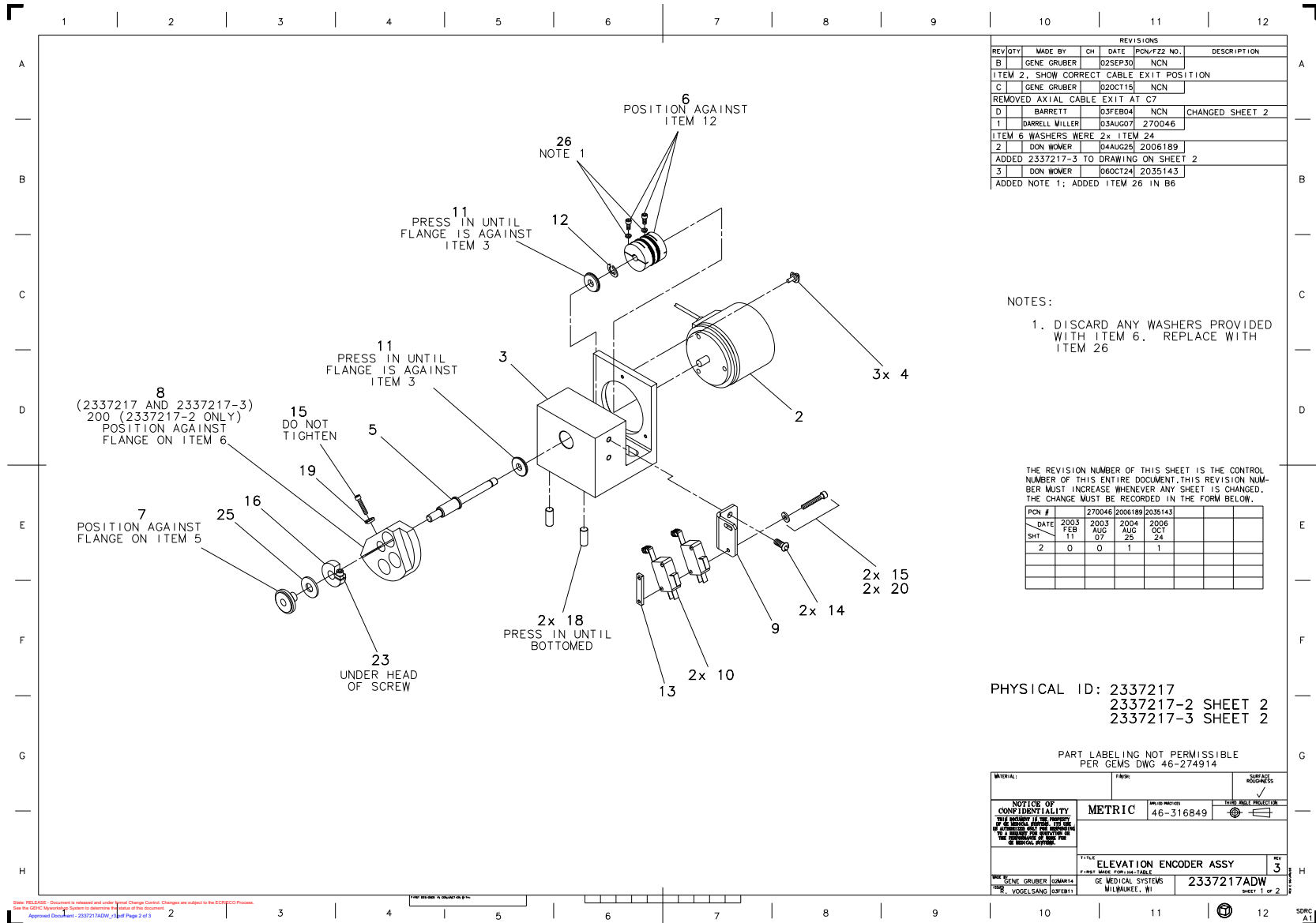
Table 2-10 Cradle Drive Assembly (2339120 BOM, rev 6) (Continued)

MARK	NUMBER	QTY	FRU CODE	DESCRIPTION/NAME
34	46-222894P1	1.0	Yes	USM CORP HDC3C-86-2BL
2	2265831	1.0	No	END PLATE, LH (REF 46-296068P1)
3	2339121	1.0	No	PLATE, END - RH
9	2265818	1.0	No	IDLER SHAFT (REF 46-296038P1)
12	403B335P10	1.0	No	06 POSITION TERMINAL STRIP, 20 AMP, W/QUICK CONN TERMINALS (RIVETED). (7/16~ CENTERS, W/2 MOUNTING HOLES). TWO TABS PER POSITION. (DWG REV, TK,4/91).
15	403B320P97	1.0	No	2 POSITION MARKER STRIP. 7 & 8 MARKED HORIZONTALY AT TOP. .437~ CENTERS, 2 MOUNTING HOLES. NUMBERS 7 & 8, LEFT TO RIGHT. (DWG REV 6/92, JFK - OK).
23	2261718	1.0	No	BRACKET, SOLENOID, (REF 46-296107P1)
24	2265829	1.0	No	SPACER BAR (REF 46-296063P1)
25	2265830	2.0	No	PIVOT PIN (REF 46-296064P1)
27	2265833	2.0	No	SUPPORT BAR (REF 46-296070P1)
31	2265824	1.0	No	BEARING SUPPORT (REF 46-296042P1)
35	46-221451P1	0.0	No	EXXON BEACON 325 35 LB PAIL
37	2265865	1.0	No	KEY 2.38SQX15MMLG (REF 46-217252P4)
41	2265834	1.0	No	SHAFT (REF 46-296110P1)
42	2265825	1.0	No	BEARING SUPPORT (REF 46-296043P1)
49	403B335P17	1.0	No	02 POSITION TERMINAL STRIP, 20 AMP, W/QUICK CONN TERMINALS (RIVETED). (7/16~ CENTERS, W/2 MOUNTING HOLES). TWO PUSH-ON TABS PER POSITION. (DWG REV 4/91, TK)
56	2261694	1.0	No	CLUTCH LINK BAR, (REF 46-327185P1)
60	2261717	1.0	No	BRACKET, STOP, (REF 46-296084P1)
66	2265865-2	1.0	No	KEY 4.76SQX50MMLG
73	1000904P514	2.0	No	I.D. 0.789 O.D. 1.100 THK .0785 MATL STEEL B8A3A TRUARC 5900-78 OR EQUIV.
82	2134525	1.0	No	ZEUS TABLE CRADLE DRIVE; HIAWATHA CARBOXYLATED NITRILE
83	2134526	1.0	No	ZEUS TABLE CRADLE DRIVE; HIAWATHA CARBOXYLATED NITRILE
54	46-297397P1	1.0	No	NO DESCRIPTION PROVIDED

Table 2-10 Cradle Drive Assembly (2339120 BOM, rev 6) (Continued)

1.5.4 Encoder Assembly, Elevation - H Power (2337217-3)

FRU = 1



REVISIONS				
REV#	MADE BY	CHK	DATE	PCN/REVZ NO. DESCRIPTION
B	GENE GRUBER		03SEP00	NCN
ITEM 2, SHOW CORRECT CABLE EXIT POSITION				
C	GENE GRUBER		02OCT15	NCN
REMOVED AXIAL CABLE EXIT AT C7				
D	BARRETT		03FEB04	NCN CHANGED SHEET 2
1	DARRELL MILLER		03AUG07	270046
ITEM 6 WASHERS WERE 2x ITEM 24				
2	DON WOMER		04AUG25	2006189
ADDED 2337217-3 TO DRAWING ON SHEET 2				
3	DON WOMER		06OCT24	2035143
ADDED NOTE 1; ADDED ITEM 26 IN B6				

NOTES:
1. DISCARD ANY WASHERS PROVIDED WITH ITEM 6. REPLACE WITH ITEM 26

THE REVISION NUMBER OF THIS SHEET IS THE CONTROL NUMBER OF THIS ENTIRE DOCUMENT. THIS REVISION NUMBER MUST INCREASE WHENEVER ANY SHEET IS CHANGED. THE CHANGE MUST BE RECORDED IN THE FORM BELOW.

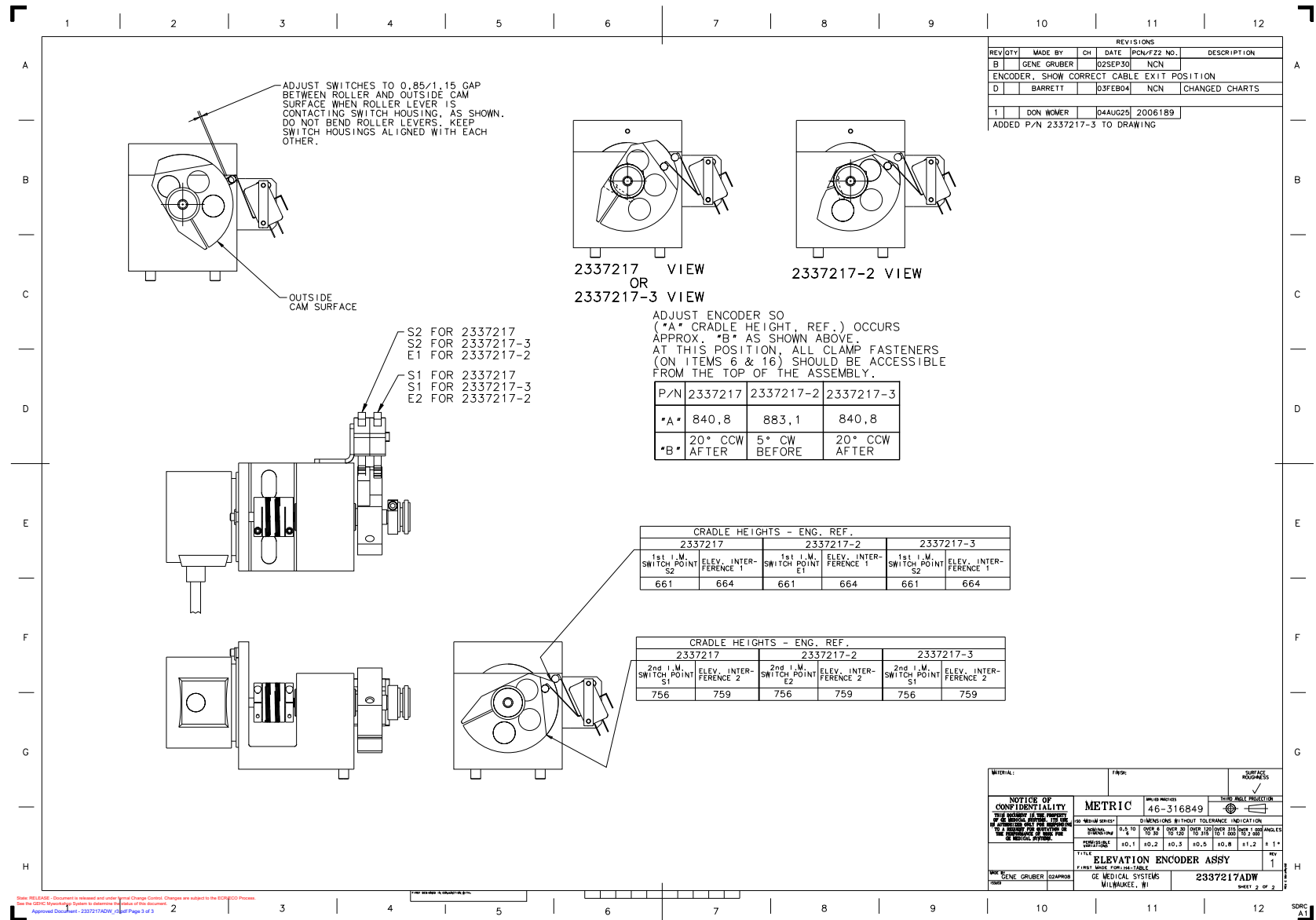
PCN #	270046	2006189	2035143		
DATE	2003 FEB 11	2004 AUG 07	2006 OCT 24		
SHT	2	0	0	1	1

PHYSICAL ID: 2337217
2337217-2 SHEET 2
2337217-3 SHEET 2

PART LABELING NOT PERMISSIBLE PER GEMS DWG 46-274914

MATERIAL:	FINISH:	SURFACE PROTECT:
NOTICE OF CONFIDENTIALITY: THIS PRODUCT IS THE PROPERTY OF GE MEDICAL SYSTEMS. IT IS TO BE USED ONLY FOR THE INTENDED APPLICATION AND IS NOT TO BE REPRODUCED OR TRANSMITTED IN ANY FORM OR BY ANY MEANS, ELECTRONIC OR MECHANICAL, INCLUDING PHOTOCOPYING, RECORDING, OR BY ANY INFORMATION STORAGE AND RETRIEVAL SYSTEM, WITHOUT THE WRITTEN PERMISSION OF GE MEDICAL SYSTEMS.		
METRIC 46-316849		<input checked="" type="checkbox"/> DIM INCH PROJECTION
TITLE: ELEVATION ENCODER ASSY		REV: 3
DRAWN BY: GENE GRUBER (23A0414)		GE MEDICAL SYSTEMS MILWAUKEE, WI
CHECKED BY: GENE GRUBER (23A0414)		2337217ADW SHEET 1 OF 2

Figure 2-15 Encoder Assembly, Elevation - H Power (2337217-3, sheet 1, rev 3)



Encoder Assembly, Elevation - H Power (2337217-3, sheet 2, rev 1)

MARK	NUMBER	QTY	FRU CODE	DESCRIPTION/NAME
2	2342726-2	1.000	1	ABSOLUTE ENCODER, SINGLE
4	46-296780P2	3.000	1	SYN-CLAMP
6	46-296259P9	1.000	1	ROCOM COUPLING: BORES 06MM, 06MM
10	46-136334P57	2.000	1	SPDT, MINIATURE BASIC SWITCH. 10A @125/250VAC, 0.25A @250VDC. ROLLER ACTUATOR, .188~ PUSH-ON TERM. (DWG REV 3/92, JFK - OK).

Table 2-11 Encoder Assembly, Elevation - H Power (2337217-3 BOM, rev 3)

1.5.5 Table Frame Assembly (2335177-2)

FRU = NO

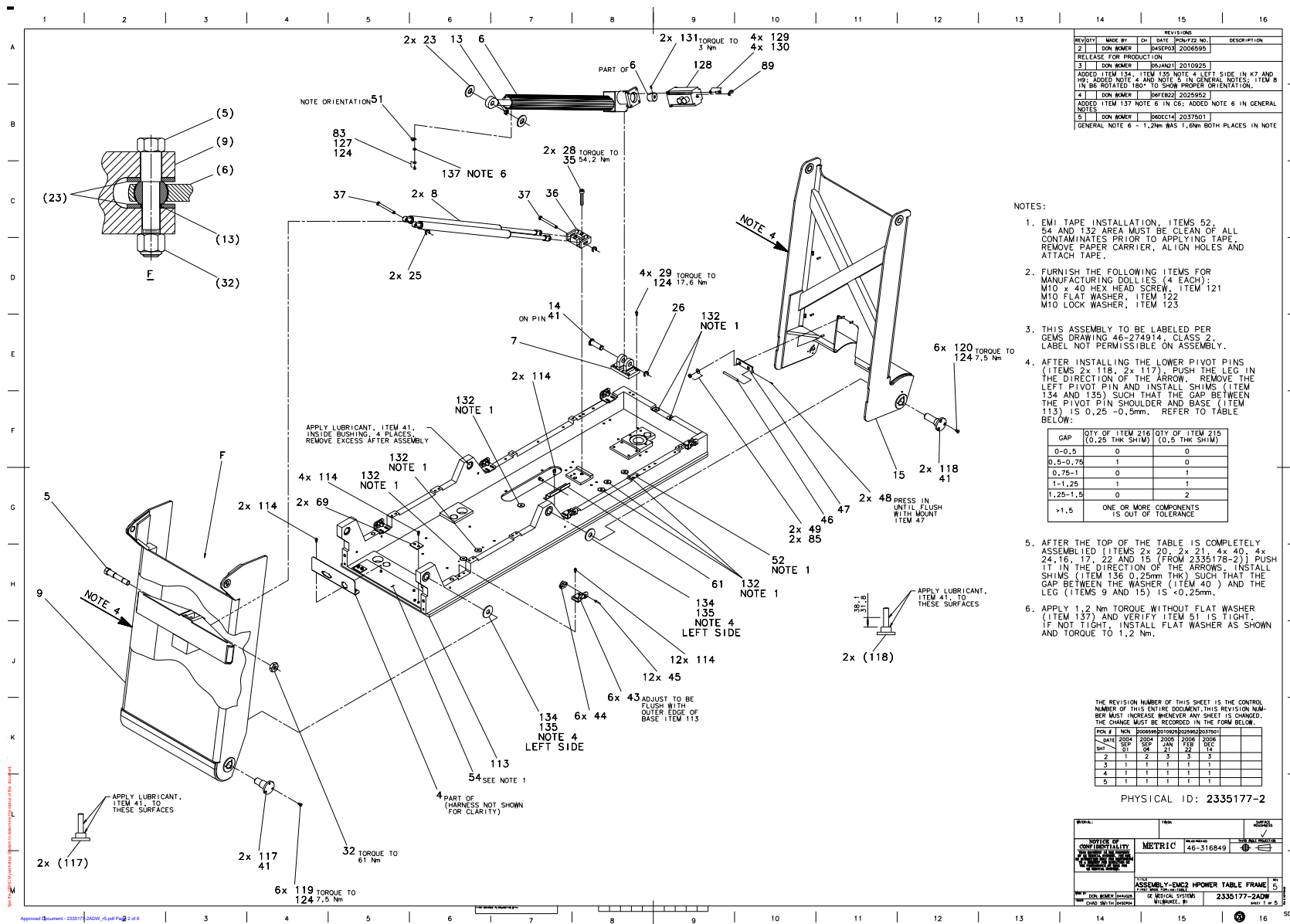


Figure 2-16 Table Frame Assembly (2335177-2, sheet 1, rev 5)

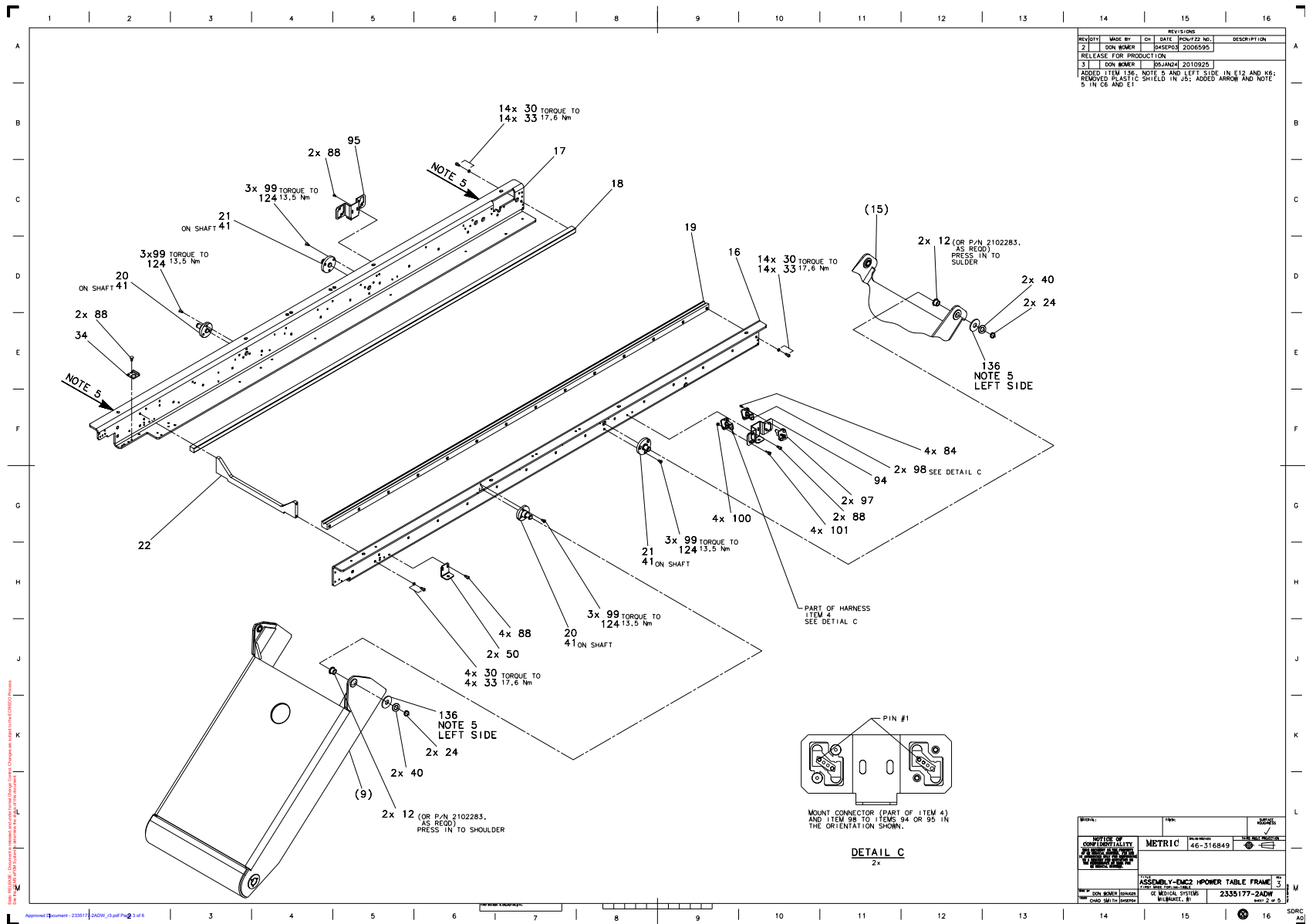


Figure 2-17 Table Frame Assembly (2335177-2 sheet 2, rev 3)

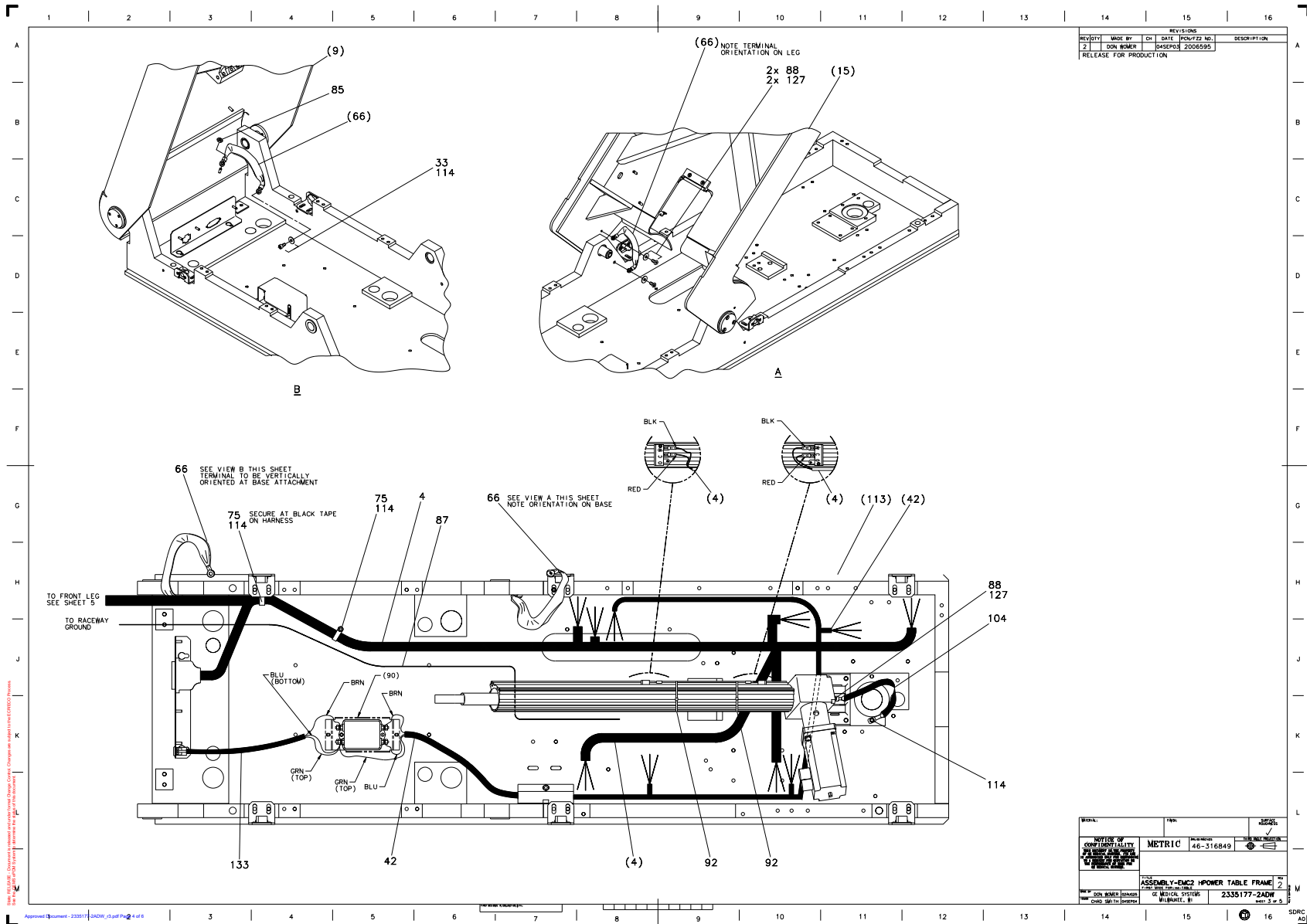


Figure 2-18 Table Frame Assembly (2335177-2 sheet 3, rev 2)

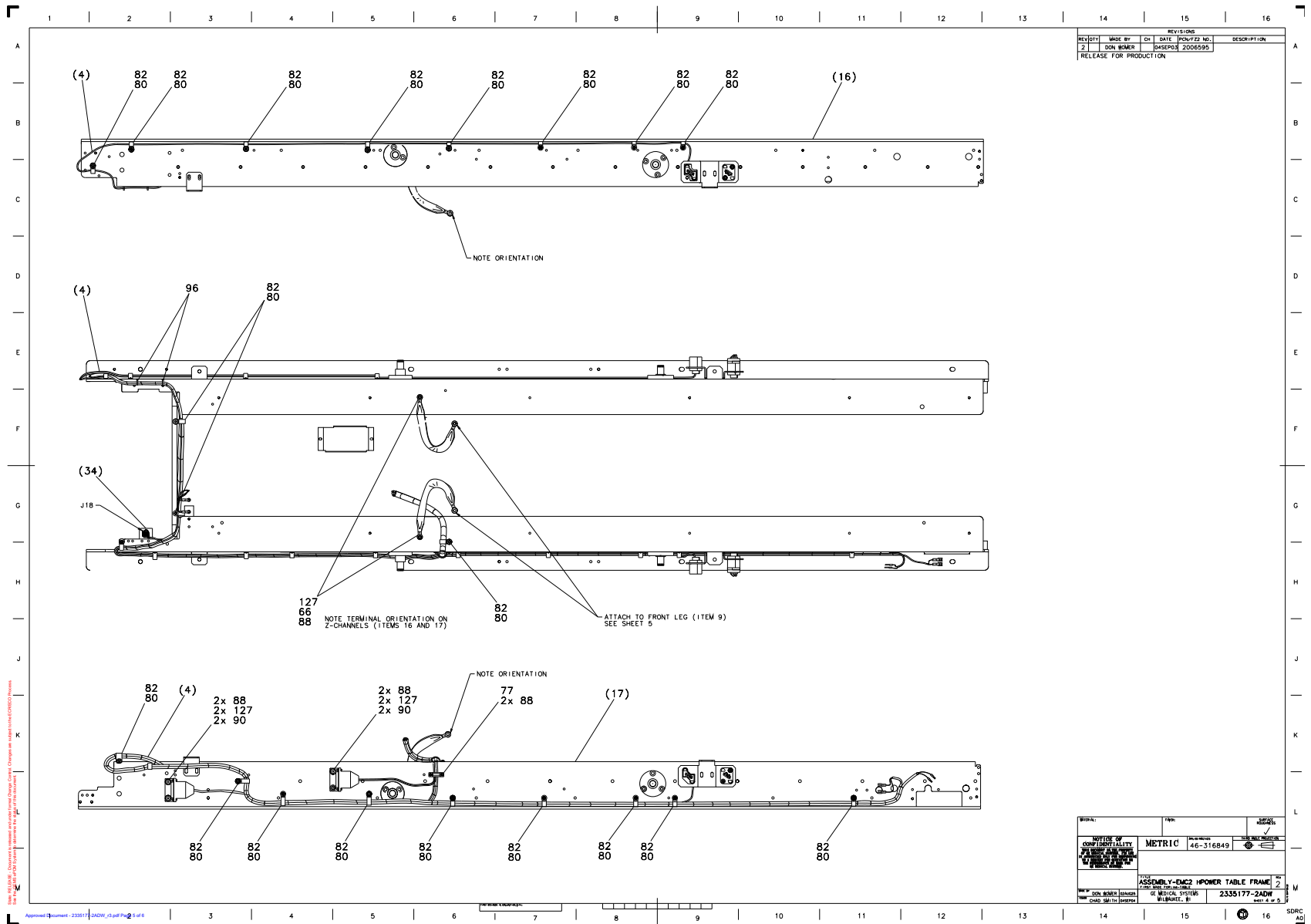


Figure 2-19 Table Frame Assembly (2335177-2, sheet 4, rev 2)

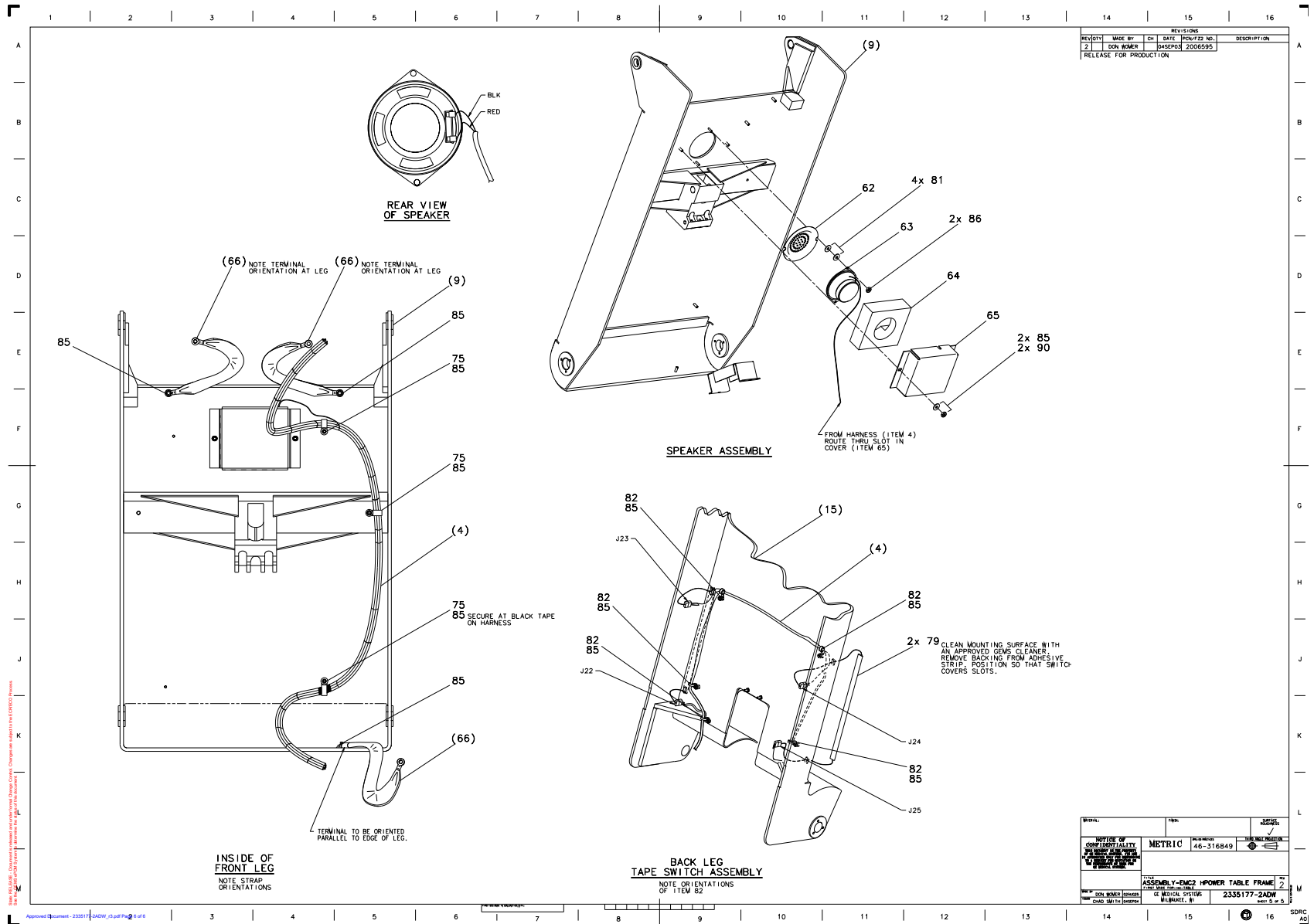


Figure 2-20 Table Frame Assembly (2335177-2 sheet 5, rev 2)

MARK	NUMBER	QTY	FRU CODE	DESCRIPTION/NAME
4	2347434-2	1.0	Yes	HARNES, CT TABLE SIGNAL - H PWR, EMC2
5	2265855	1.0	Yes	PIN, ROD END (REF 46-296770P1)
6	2343479-2	1.0	Yes	Actuator, Linear, H-Power based Tables, Pinned
8	2100671	2.0	Yes	CT TABLE GAS SPRING
18	2259859	1.0	Yes	CARRIAGE_RAIL, (REF 46-278261P1)
19	2259860	1.0	Yes	CARRIAGE RAIL, V, (REF 46-278262P1)
23	46-297350P1	2.0	Yes	SPACER
24	46-220179P15	4.0	Yes	EXT AXIAL MOUNT 0.625 SHAFT DIA 0.579 FREE DIA .035 THK STL OIL DIP N900P62 BASIC
25	46-220277P15	2.0	Yes	EXT RADIAL MOUNT 0.312 SHAFT DIA 0.243 FREE DIA-.025 THK STL BLK PHOS N910P31 E-RING
26	46-220277P11	1.0	Yes	EXT RADIAL MOUNT 0.625 SHAFT DIA 0.480 FREE DIA-.042 THK STL BLK PHOS N910P62
28	46-328417P26	2.0	Yes	SCREW HEXAGON SOCKET 10 MM 40 MM ZINC PLATED, STEEL
29	46-328417P15	4.0	Yes	SCREW HEXAGON SOCKET 6 MM 25 MM ZINC PLATED, STEEL
30	46-170498P14	32.0	Yes	SCREW SCREW OLD F70B5A2 ZINC PL HT TR FOR HYD EMB
32	46-170012P81	1.0	Yes	005/8-18 HEX .940 NUT HT .750 STL ZINC PLATED ESNA 51NE-108
33	46-220181P6	33.0	Yes	1/4~ SCREW SIZE (0.250), STL NI PLT ID 0.255-0.263 OD 0.489 WIDTH 0.109 THK 0.062
35	46-170684P1	0.0	Yes	LOCTITE 271, 0.5CC VIAL 12 MONTH SHELF LIFE FROM DATE OF SHIPMENT FROM THE MANUFACTURER
37	2265876	2.0	Yes	PIN, GAS SPRING (REF 46-297436P1)
40	12-128	4.0	Yes	WASHER,FLAT ID 0.625 OD 1.156 THK. .0598 MATL: STEEL FINISH: PLAIN
41	46-170623P2	0.0	Yes	BLACK, HEAVY-DUTY LUBRICATING PASTE. (1 PINT CAN) SHELF LIFE, UNDER NORMAL STORAGE CONDITIONS, HAS NO KNOWN LIMITS. (DWG REV 6/92, JFK - OK).
42	2373415	1.0	Yes	HARNES TABLE AC PWR
44	46-297329P2	6.0	Yes	1/4 TURN RECEPTACLE - FIXED .128~ DIA. MOUNTING HOLES
45	46-220186P20	12.0	Yes	1/8~ 120 DEGREE COUNTERSUNK POP RIVET .129-.133,GRIP RANGE .126-.187 USM CORPORATION PART # AK4385

Table 2-12 Table Frame Assembly (2335177-2 BOM, rev 8)

MARK	NUMBER	QTY	FRU CODE	DESCRIPTION/NAME
49	12-275	2.0	Yes	WASHER, ID .2656, OD.75, THK .050 STEEL F70B5A
50	2261663	2.0	Yes	BRKT, TBL TOP COVER, (REF 2138099)
52	46-297705P2	1.0	Yes	CONDUCTIVE TAPE
63	46-297687P1	1.0	Yes	8 OHM, 4W, 3-1/2~ SPEAKER. 2.9 OZ CERAMIC MAGNET, 90 DB. (0.187~ Q.C. TERMINALS) (DWG REV 3/92, JFK - OK).
64	46-297686P2	1.0	Yes	SPEAKER INSULATION FOR H2 HCC CATHAY TABLE
66	46-297155G1	4.0	Yes	ZEUS TABLE, 9~ LONG CABLE
75	46-208759P4	6.0	Yes	13.93~X .301~ SELF-LOCKING CABLE TIE 3/16~ TO 3-1/2~ WIRE BUNDLE RANGE. 120LBS TENSILE STRENGTH, NAT. NYLON. (10-32 SCREW MOUNTING HOLE SIZE) MOUNTING HOLE FOR 10-32 SCREW. (DWG REV 4/92, JFK - OK).
77	46-297648P1	1.0	Yes	CABLE CLAMP
79	46-297698P1	2.0	Yes	11~ LOW PROFILE BEAD, RIBBON SWITCH. 28 VAC OR VDC @ 2A, .12~ BEND RADIUS 8OZ ACTUATION FORCE FOR .177D ROD. (AXIAL LEADS W/ 2-PIN CONNECTORS) SEE TEXT DATA AND DRAWING FOR COMPLETE DETAILS. (DWG REV 3/92, JFK - OK) LOWER RIGHT & LOWER LEFT TAPESWITCH
81	1000904P395	4.0	Yes	ID 0.177 OD 0.312 THK .062B4B33A F70B5A
82	46-208759P1	25.0	Yes	7.81~ X .184~ SELF-LOCKING CABLE TIE 1/16~ X 1-3/4~ WIRE BUNDLE RANGE. 50 LBS TENSILE STRENGTH, NAT. NYLON. (#10 SCREW MOUNTING HOLE SIZE) MAT~L: NYLON 6/6 PER MIL-N-20693 AND ASTM D4066 STOCK #: 08415 - NATURAL, TYPE I
83	46-208560P46	1.0	Yes	SCREW SCREW OLD ZINC PL
84	46-170497P38	4.0	Yes	SCREW SCREW OLD HD STL F70B5A2 ZINC PL HT TR FOR HYD EMB N647P13008
85	46-170012P63	16.0	Yes	0010-32 HEX .375 NUT HT .239 STL ZINC PL ESNA 21NM-02
86	46-170012P61	2.0	Yes	0006-32 HEX .313 NUT HT. .178 STL ZINC PL ESNA 21NM-62 OR AERO 21NM-0632
87	2367487	1.0	Yes	GROUND - TABLE TO RACEWAY GND BAR
88	2146815-2	21.0	Yes	10-32 X 3/8 HEX SOC BUTTON HD SST MA
90	12-276	6.0	Yes	ID 0.2040 OD 0.5630 THK .0478 STL F70B5A
92	46-208758P9	2.0	Yes	11.08~X .140~ SELF-LOCKING CABLE TIE 1/16~ TO 3~ WIRE BUNDLE RANGE. 40LB TENSILE STRENGTH, NYLON MATR~L. (DWG REV 5/92, JFK - OK).

Table 2-12 Table Frame Assembly (2335177-2 BOM, rev 8) (Continued)

MARK	NUMBER	QTY	FRU CODE	DESCRIPTION/NAME
96	46-208758P1	2.0	Yes	3.62~ X .094~ CABLE TIE 1/16~ TO 5/8~ WIRE BUNDLE RANGE 18LB TENSILE STRENGTH, NYLON MATR'L.
97	46-297805G1	2.0	Yes	JUMPER CONN.
98	46-297805G2	2.0	Yes	JUMPER CONN.
99	46-208562P7	12.0	Yes	SCREW SCREW OLD STL F70B5A2 ZINC PL HT TR FOR HYD EMB
100	46-170012P62	4.0	Yes	0008-32 HEX .343 NUT HT .229 STL ZINC PL ESNA 21NM-82
104	2106866-2	1.0	Yes	.75 IN WIDE INSULATED CABLE W/LUGS 9.00 INCHES LONG
114	46-328417P12	25.0	Yes	SCREW HEXAGON SOCKET 6 MM 12 MM ZINC PLATED, STEEL
117	2261676	2.0	Yes	PIN, TBL LOWER, FRONT,(REF 2136121)
118	2261677	2.0	Yes	PIN, TBL LOWER, REAR, (REF 2138104)
119	46-170498P32	6.0	Yes	SCREW SCREW OLD F70B5A2 ZINC PL HT TR FOR HYD EMB
120	46-208562P20	6.0	Yes	SCREW SCREW OLD STL F70B5A2 ZINC PL HT TR FOR HYD EMB N646P16010
121	46-328416P23	4.0	Yes	SCREW HEXAGON HEAD 10 MM 40 MM ZINC PLATED, STEEL
122	46-328431P3	4.0	Yes	WASHER PLAIN - LARGE 10.5 MM 30 MM ZINC PLATED, STEEL
123	46-328432P4	4.0	Yes	WASHER LOCK - SPRING 10.2 MM 18.1 MM ZINC PLATED, SPRING STEEL
124	46-170686P2	0.0	Yes	LOCTITE 242, 10CC 12 MONTH SHELF LIFE FROM DATE OF SHIPMENT FROM THE MANUFACTURER
127	46-220181P5	8.0	Yes	WASHER #10 (.190) SCREW SIZE, ID .194-.202 OD .334, WIDTH .062 THK .047, STEEL ZINC PLT
128	2342733-2	1.0	Yes	H-POWER, AC ELEVATION MOTOR, EMC2
129	46-313575P3	4.0	Yes	HIGH COLLAR LOCK WASHER FOR M5 SCREW
131	46-328424P36	2.0	Yes	SCREW SET SCREW 5 MM 8 MM
133	2373417	1.0	Yes	HARNESS BULKHEAD TO FILTER
7	2133760-2	1.0	No	ZEUS TABLE ACTUATOR BASE MOUNT MACHINING
9	2255160-2	1.0	No	FRONT LEG FOR H2 LCC CATHAY TABLE, MACHINING
12	46-136342P135	4.0	No	BUSHING BEARING FLANGE O.D. 1.000 THK. .125
13	2265856	1.0	No	SPACER, ROD END (REF 46-296771P1)
14	2265853	1.0	No	PIN, ACTUATOR (REF 46-278310P1)

Table 2-12 Table Frame Assembly (2335177-2 BOM, rev 8) (Continued)

MARK	NUMBER	QTY	FRU CODE	DESCRIPTION/NAME
15	2255158-2	1.0	No	REAR LEG FOR H2 LCC CATHAY TABLE, MACHINING
16	2259855	1.0	No	CHANNEL,LEFT SUPPORT,(REF 2138098)
17	2338713	1.0	No	CHANNEL, RIGHT SUPPORT
20	2261670	2.0	No	PIN, TABLE TOP, FRONT (REF 2140091)
21	2261671	2.0	No	PIN, TABLE TOP, REAR, (REF 2140092)
22	2261678	1.0	No	BRACE, FRONT, (REF 46-296811P1)
34	2261685	1.0	No	BRKT, R-CHANL CON, (REF 46-297055P1)
36	2261722	1.0	No	BLOCK, MOUNTING, (REF 46-297435P1)
43	2265871	6.0	No	BRACKET TBL BASE CVR (46-297205P1)
46	2329243	1.0	No	SHAFT
47	2329245	1.0	No	ROLLER MOUNT
48	46-170020P2	2.0	No	NOMINAL DIA 0.0938X 0.500 LG PREC. HARDENED & GROUND RC 36/ 40 SST #416
51	2261692	1.0	No	SPRING CLAMP, (REF 46-297677P1)
54	46-297705P4	1.0	No	MET-CON TAPE
61	2261689	1.0	No	CABLE TROUGH, (REF 46-297343P2)
62	2261674	1.0	No	SPEAKER GRILL, (REF 46-297684P1)
65	2265879	1.0	No	SPEAKER COVER (REF 46-297685P2)
69	2265875	2.0	No	CLAMP, GRND STRAP (REF 46-297427P1)
80	2146815	20.0	No	10-32 X 1/2 HEX SOC BUTTON HD SST MA
89	46-297731P1	1.0	No	MOTOR LABEL
94	2261712	1.0	No	BRKT, LH TBL TOP CVR, (REF 2138105)
95	2261712-2	1.0	No	BRKT, RH TBL TOP CVR,(REF 2138105-2)
101	2265880	4.0	No	SHOULDER SCREW (REF 46-297858P1)
113	2343440-2	1.0	No	BASE, TABLE - MACHINING H PWR
130	46-328417P505	4.0	No	SCREW HEXAGON SOCKET 5 MM 16 MM
132	46-297705P16	8.0	No	METALLIC CONDUCTIVE TAPE, 1~ DIA
134	5130946	2.0	No	SHIM-TABLE LEG ADJUSTMENT, HPOWER-TABLE

Table 2-12 Table Frame Assembly (2335177-2 BOM, rev 8) (Continued)

MARK	NUMBER	QTY	FRU CODE	DESCRIPTION/NAME
135	5130946-2	2.0	No	SHIM-TABLE LEG ADJUSTMENT, 40OD X 22ID X 0,25THK, HPOWER-TABLE
136	5130946-3	4.0	No	SHIM-TABLE LEG ADJUSTMENT, 35OD X 16ID X 0,25THK, HPOWER-TABLE

Table 2-12 Table Frame Assembly (2335177-2 BOM, rev 8) (Continued)

Section 2.0 — Foot Switch Assembly (2330508)

FRU = NO

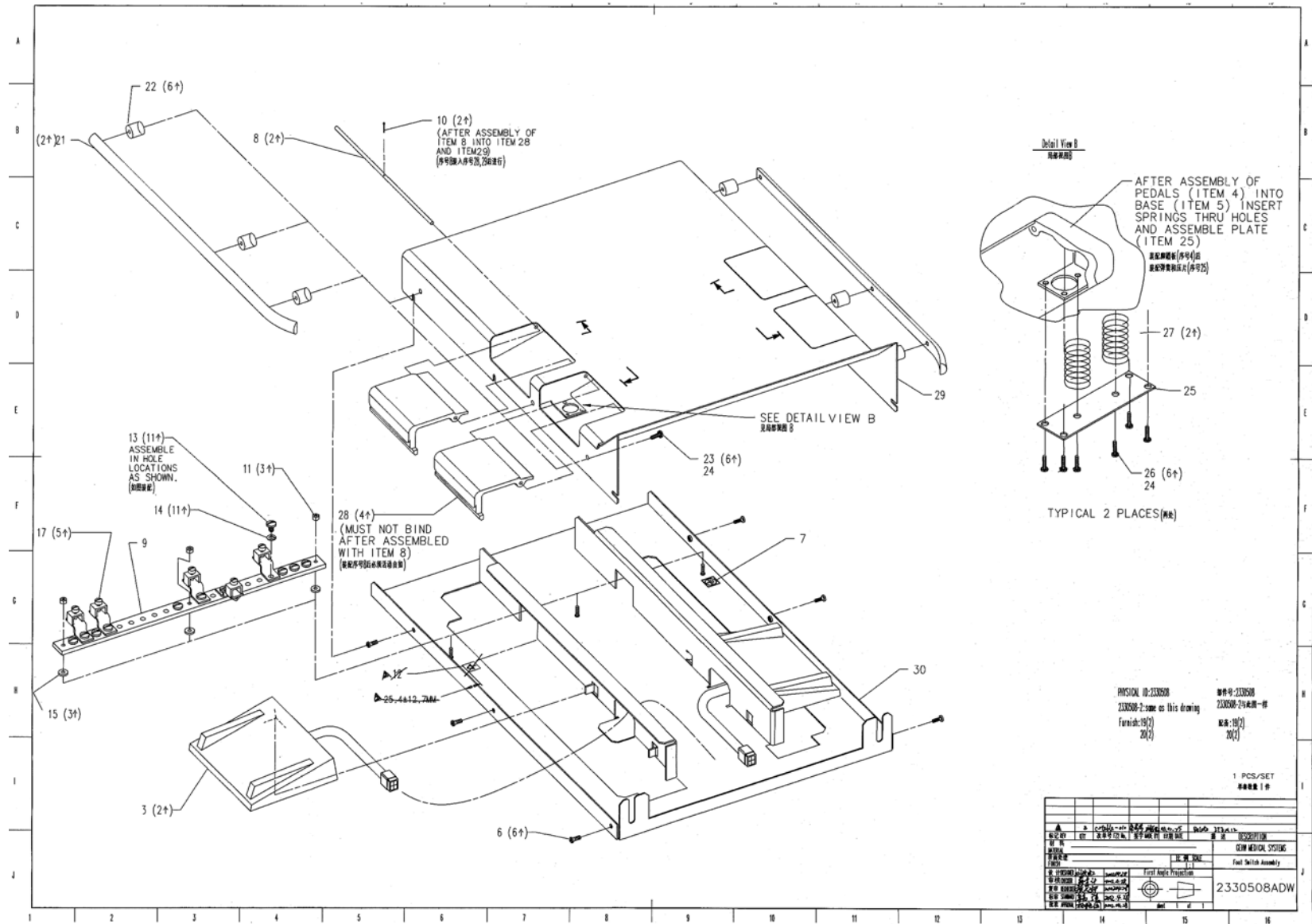


Figure 2-21 Foot Switch Assembly (2330508, sheet 1, rev 2)

MARK	NUMBER	QTY	FRU CODE	DESCRIPTION/NAME
3	46-296129G1	2.000	1	FOOT SWITCH
28	2329241	4.000	1	FOOT PEDAL
29	2297598	1.000	1	FOOT SWITCH COVER

Table 2-13 Footswitch Assembly (2330508 BOM, rev 6)

