

Chapter 3

PDU

MARK	NUMBER	QTY	FRU	DESCRIPTION/NAME
1	2326492-3	1.0	Yes	NGPDU (90 KVA VERSION) {For further detail, see Section 1.0, beginning on page 114. }

Table 3-1 NGPDU -90 KVA VERSION (B79932AB BOM, rev 1)

MARK	NUMBER	QTY	FRU	DESCRIPTION/NAME
3	2111577	1.0	Yes	P9810AM RATING PLATE FILM
6	2117390	1.0	Yes	LABEL, CE MARKING COMPLIANCE
8	5149878	1.0	Yes	Main Power Multi-language Label
9	5149893	1.0	Yes	Gantry Enable Multi-language Label
10	5149894	1.0	Yes	Emergency Stop Multi-language label
1	2380116	1.0	No	NGPDU ASSEMBLY3 {For further detail, see Section 1.1, beginning on page 116. }
2	P9336BZ	1.0	No	EMBLEM
4	2357432-3	1.0	No	RATING PLATE FOR NGPDU
5	5132810	1.0	No	ETL Label Component CT Beijing
7	5139485	1.0	No	WEEE LABEL WITH BIN ONLY

Table 3-2 NGPDU -90 KVA VERSION (2326492-3 BOM, Rev 7)

1.1 NGPDU ASSEMBLY3 (2380116)

FRU = NO

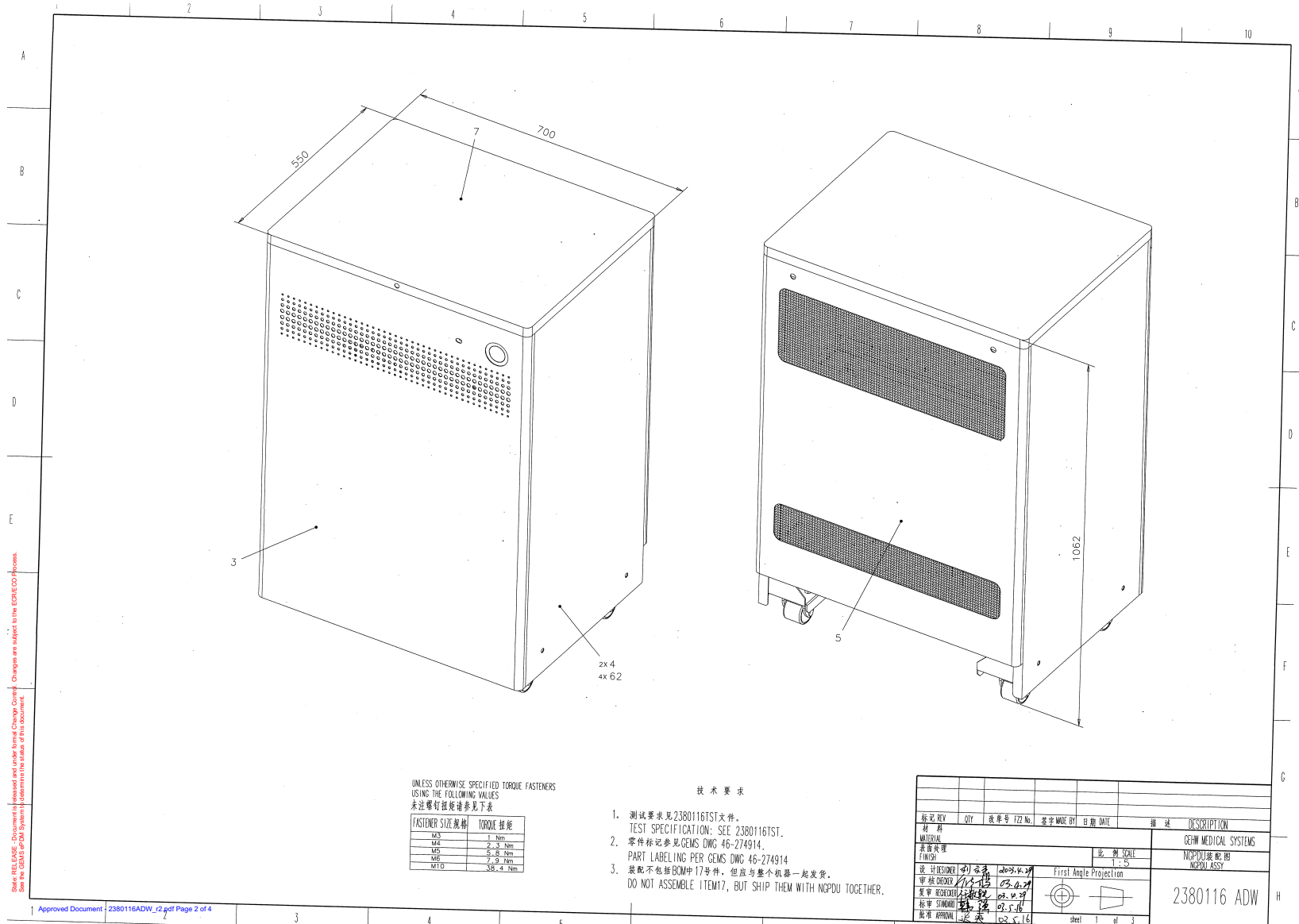


Figure 3-2 NGPDU ASSEMBLY3 (2380116ADW, sheet 1, rev 2)

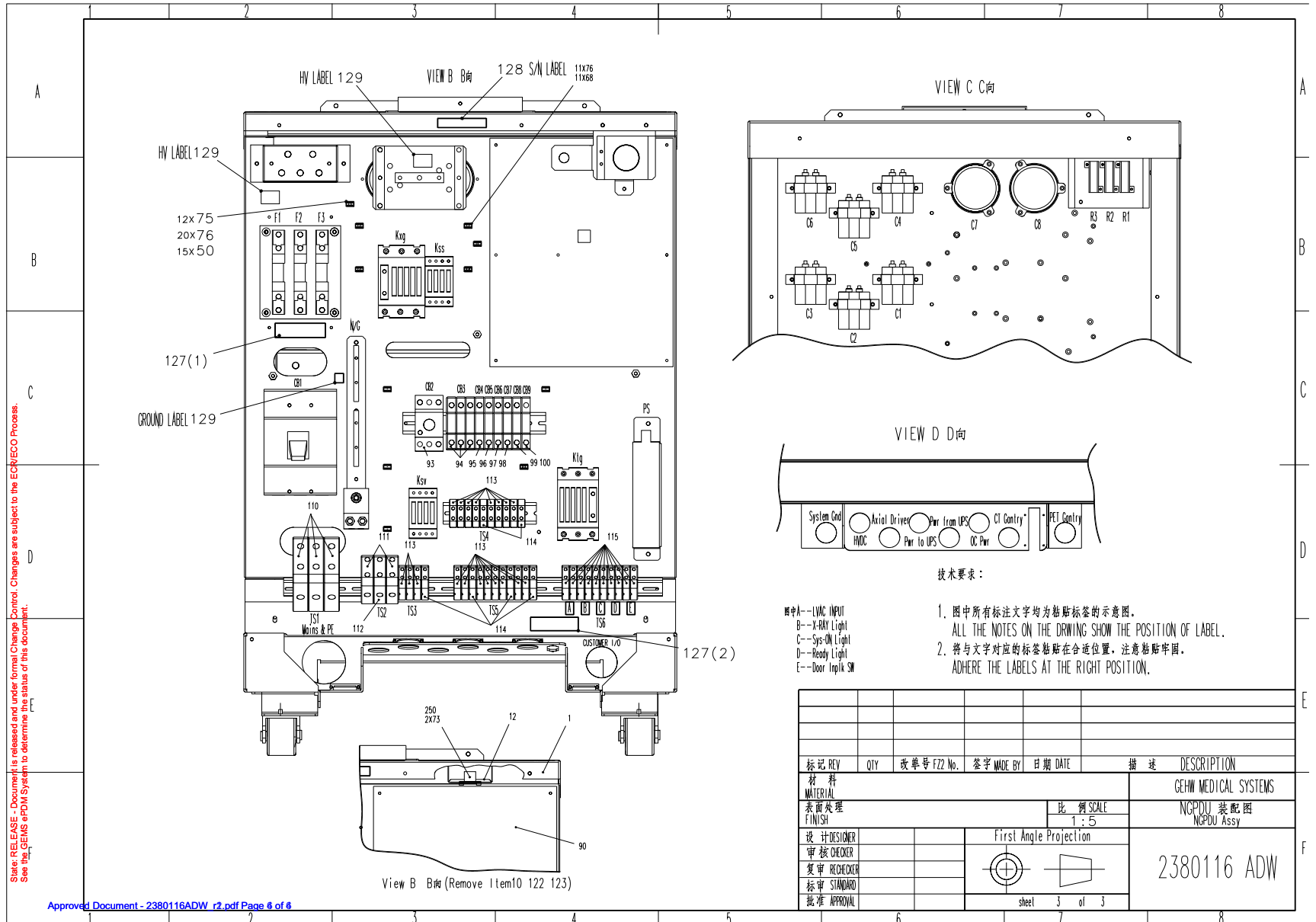


Figure 3-4 NGPDU ASSEMBLY3 (2380116ADW, sheet 3, rev 2)

MARK	NUMBER	QTY	FRU	DESCRIPTION/NAME
	*2113764-3 5324753	6.0	Yes	CAPACITOR, 6UF, 370VAC PM,FILTER CAP C1,C2,C3,C7,C8,C9 CAPACITOR,6UF,370VAC PM FILTER
	2286488	1.0	Yes	LED ASSY
	2295531	1.0	Yes	TERMINAL CONNECTOR
	2295543	1.0	Yes	BRK-32A
	2295544	1.0	Yes	BRK-16A
	2295545	1.0	Yes	BRK-20A
	2295546	1.0	Yes	BRK-4A
	2298762	1.0	Yes	TERMINAL CONNECTOR
	2298763	1.0	Yes	TERMINAL CONNECTOR
	2351484	1.0	Yes	15A BREAKER
	2351485	1.0	Yes	40A BREAKER
	2351486	1.0	Yes	10A BREAKER
	2351487	1.0	Yes	40A BREAKER
	*5340264 2351488	1.000	Yes	ABB Contactor Service Kit {For further detail, see Section 1.2, beginning on page 128. } 100A CONTACTOR
	*2351489 5343375	1.0	Yes	50A CONTACTOR NGPDU Rohs 50A CONTACTOR
	2351490	1.0	Yes	18-32A CONTACTOR
	*2351491 5324764	1.0	Yes	14-25A CONTACTOR GE 14-25A Contactor
	2351493	3.0	Yes	100A FUSE

Note: *5324753 can replace 2113764-3 directly.

*Order 5340264 (ABB Contactor Service kit for NGPDU) to replace the 2351488

*5343375 is compatible with 2351489 for Rohs requirement.

*5324764 can replace 2351491 directly for Rohs requirement.

Table 3-3 NGPDU ASSEMBLY3 (2380116 BOM, Rev 28)

MARK	NUMBER	QTY	FRU	DESCRIPTION/NAME
	*2351494	2.0	Yes	4600UF/450V CAPACITOR
	5324768			NGPDU 450V capacitor
	2351495	1.0	Yes	DIODE BRIDGE
	2356926	1.0	Yes	TERMINAL CONNECTOR
	2356927	1.0	Yes	TERMINAL CONNECTOR
	2356928	1.0	Yes	TERMINAL CONNECTOR
	2356929	1.0	Yes	END BRAKET
	*2361774	1.0	Yes	+24V PS
	5324776			NGPDU 24V DC power supply
	*2391041	1.0	Yes	SS RESISTER ASSY
	2396924	1.0	Yes	REAL SWITCH
	2405168	1.0	Yes	CB ASSY
	5147886	1.0	Yes	NG-3 Signal Cable
	5337228	1.0	Yes	ABB A110 Contactor
3	*2354578-2	1.0	Yes	FRONT COVER
	5434914			NGPDU Front Cover
4	2354579	2.0	Yes	SIDE COVER
5	2354580	1.0	Yes	REAR COVER
7	2354581	1.0	Yes	TOP COVER
10	2354559-2	1.0	Yes	PANEL PLATE
21	2295889	1.0	Yes	INSULATED PANEL-1
48	5327550-2	29.0	Yes	U0102AA Cross Recessed Pan Head Screw with Flange, M4-0.7 X 8mm Long, Grade 4.8 Steel, Zinc plate RoHS Fastener
51	2000-M5-03	39.0	Yes	Flat Washer, ISO7089, M5, Steel 200HV, Zinc Plated, RoHS Fastener

Note: *5324768 can replace 2351494 directly for RoHs requirement.

*5324776 can replace 2361774 directly for RoHs requirement.

*Order 5334050 (PDU Resistor Assy) to replace the 2391041 and 2391041-2

*Update NGPDU front cover to meet IEC Ed3

Table 3-3 NGPDU ASSEMBLY3 (2380116 BOM, Rev 28) (Continued)

MARK	NUMBER	QTY	FRU	DESCRIPTION/NAME
53	3100-M5C-29	4.0	Yes	Hexagon Nut, JIS B1181-attached,M5-0.8, Grade 4T Steel, Zinc Plated, RoHS Nut
54	1107-M5C010-14	3.0	Yes	Cross Recessed Pan Head Screw, M5-0.8 X 10mm Long, Grade 4.8 Steel, Zinc plate RoHS Fastener
57	2203-M4-07	1.0	Yes	Curved Lock Washer, DIN 128A, M4, Spring Steel, Zinc Plated, RoHS Fastener
58	2000-M4-03	1.0	Yes	WASHER PLAIN - LARGE 4.3 MM 9 MM , HV200, Steel, Zinc plate RoHS Washer
70	1107-M4C014-14	8.0	Yes	Cross Recessed Pan Head Screw, M4-0.7 X 14mm Long, Grade 4.8 Steel, Zinc plate RoHS Fastener
72	U0202AC	38.0	Yes	CLAMP CV_150
73	5327550	8.0	Yes	U0101AA Cross Recessed Pan Head Screw with Flange, M3-0.5 X 6mm Long, Grade 4.8 Steel, Zinc plate RoHS Fastener
75	U0203AC	9.0	Yes	CLAMP CV_200
76	U0208AC	14.0	Yes	CLAMP TC-142 TAIRATSUPU KOTEI
77	U0212AC	4.0	Yes	CLAMP TMS_20
78	U0204AC	15.0	Yes	CLAMP CV_300
79	U0201AC	60.0	Yes	CLAMP CV_100
80	U0506AC	20.0	Yes	PROTECTOR EDGING CE-012SN
81	U0502AC	4.0	Yes	PROTECTOR BUSHING KG-024
90	2334820-3	1.0	Yes	NGPDU control board
92	5324790	1.0	Yes	CB1 Breaker
93	5343368	1.0	Yes	CB2 Breaker
94	5343369	1.0	Yes	Rohs Version 40A BREAKER
95	5343370	1.0	Yes	Rohs version 10A BREAKER
96	5343371	1.0	Yes	Rohs 40A Breaker
97	5343372	1.0	Yes	Rohs 16A Breaker
98	5343373	1.0	Yes	Rohs BRK-20A
99	5343374	1.0	Yes	Rohs BRK-32A
100	5324756	1.0	Yes	BRK-4A Moller
101	5344524	1.0	Yes	ABB A110 Contactor service kit
102	5343375	1.0	Yes	Rohs 50A CONTACTOR

Table 3-3 NGPDU ASSEMBLY3 (2380116 BOM, Rev 28) (Continued)

MARK	NUMBER	QTY	FRU	DESCRIPTION/NAME
103	5324762	1.0	Yes	CONTACTOR
104	5324764	1.0	Yes	GE 14-25A CONTACTOR
106	5324766	3.0	Yes	100A FUSE
107	5324753	6.0	Yes	CAPACITOR,6UF,370VAC PM FILTER
108	5324768	2.0	Yes	4600UF 450V CAPACITOR
109	2356924	1.0	Yes	GROUND BLOCK
110	5324772	3.0	Yes	TERMINAL CONNECTOR
111	5324755	2.0	Yes	TERMINAL CONNECTOR
112	5324758	1.0	Yes	TERMINAL CONNECTOR
113	5324773	19.0	Yes	TERMINAL CONNECTOR
114	5324757	6.0	Yes	TERMINAL CONNECTOR
115	5324774	10.0	Yes	TERMINAL CONNECTOR
119	5324770	1.0	Yes	DIODE BRIDGE
120	5324776	1.0	Yes	+24V PS
121	*5334050	1.0	Yes	PDU Resistor Assy (see note)
123	5334049	1.0	Yes	PDU Indicator
125	5324775	12.0	Yes	END BRAKET
126	2357125	2.0	Yes	CABLE CONNECTOR
214	2356917-2	1.0	Yes	WIRE 18#ASSY
225	5344531	1.0	Yes	Gantry Switch
250	5146324	1.0	Yes	Temperature Sensor
1	2354582	1.0	No	NGPDU FRAME & TRANSFORMER ASSY
12	5146322	1.0	No	Protect Bd Top Steal
13	5146323	1.0	No	Protect Bd Top Plastic
14	2354564	1.0	No	FRONT PROTECT PANEL
15	2354567	1.0	No	REAR PROTECT PANEL
16	2355078	3.0	No	SUPPORT SCREW

Note: *Order 5334050 (PDU Resistor Assy) to replace the 2391041 and 2391041-2

Table 3-3 NGPDU ASSEMBLY3 (2380116 BOM, Rev 28) (Continued)

MARK	NUMBER	QTY	FRU	DESCRIPTION/NAME
17	2354563	2.0	No	FIXTURE
20	2354571	1.0	No	ALUMINIUM PANEL
22	2295890	6.0	No	COPPER BLOCK
25	2354572	1.0	No	INSULATED PANEL-2
26	2354569	2.0	No	CONDUCTION BAR-1
27	2354570	1.0	No	CONDUCTION BAR-2
30	2354557	1.0	No	BUS BAR
33	2356930	1.0	No	RAIL1
34	2356931	1.0	No	RAIL2
35	2356932	1.0	No	RAIL3
37	2354574	7.0	No	SCREW
38	2356179	1.0	No	PS SUPPORT PANEL
39	2354576	6.0	No	CLAMP
47	5344628	8.0	No	M5 SCREW with spring and washer
49	1107-M4C020-14	4.0	No	Cross Recessed Pan Head Screw, M4-0.7 X 20mm Long, Grade 4.8 Steel, Zinc plate RoHS Fastener
50	5327550-3	10.0	No	U0103AA Cross Recessed Pan Head Screw with Flange, M5-0.8 X 10mm Long, Grade 4.8 Steel, Zinc plate RoHS Fastener
59	3100-M4C-29	1.0	No	Hexagon Nut, JIS B1181-attached,M4-0.7, Grade 4T Steel, Zinc Plated, RoHS Nut
60	1013-M4C008-14	12.0	No	Phillips Pan Head Machine Screw Assembly, SEMS, M4-0.7, X8mm Long, Grade 4.8 Steel, Zinc Plated, RoHS Fastener
63	1000-M8C016-02	12.0	No	Hexagon Socket Head Cap Screw, M8-1.25, X16mm Long, Grade 8.8 Steel, Black Oxide, RoHS Fastener
65	2000-M8-03	31.0	No	Flat Washer, ISO7089, M8, Steel 200HV, Zinc Plated, RoHS Fastener
66	1107-M5C030-14	4.0	No	Cross Recessed Pan Head Screw, M5-0.8 X 30mm Long, Grade 4.8 Steel, Zinc plate RoHS Fastener
68	1107-M5C014-14	32.0	No	Cross Recessed Pan Head Screw, M5-0.8 X14mm Long, Grade 4.8 Steel, Zinc plate RoHS Fastener
71	2106-M8-40	4.0	No	Spring Lock Washer with Flat Ends JIS B1251, M8, Phosphor bronze, Rohs Fastener

Table 3-3 NGPDU ASSEMBLY3 (2380116 BOM, Rev 28) (Continued)

MARK	NUMBER	QTY	FRU	DESCRIPTION/NAME
74	5193861	8.0	No	Cable clamp
82	1106-M8C020-14	3.0	No	HEXAGON HEAD BOLT FULL THREAD, JIS B1180, M8-1.25X20MM, GRADE 4.8, STEEL, ZINC PLATED, ROHS FASTENER
83	3100-M8C-29	3.0	No	Hexagon Nut, JIS B1181-attached,M8-1.25, Grade 4T Steel, Zinc Plated, RoHS Nut
84	2249348	2.0	No	U0503AC BUSHING
85	1000-M8C025-02	13.0	No	Hexagon Socket Head Cap Screw, M8-1.25, X25mm Long, Grade 8.8 Steel, Black Oxide RoHS Fastener
86	2390699	1.0	No	END COVER
87	2401535	4.0	No	SCREW COUNTERSUNK, HEA 5 MM 10 MM
88	2203-M5-07	10.0	No	Curved Lock Washer, DIN 128A, M5, Spring Steel, Zinc Plated, RoHS Fastener
89	2001-M5-10	4.0	No	Large Flat Washer, ISO7093, M5, Stainless Steel 140HV, RoHS Fastener
116	5172830	1.0	No	Thermal sensor reset label
122	5344530	1.0	No	Emergency Switch
124	2356923	1.0	No	FERRITE CORE
127	2357127-2	1.0	No	NGPDU Warning LABEL
129	2357130	1.0	No	LABEL
130	2335556	1.0	No	WIRE 1#ASSY
131	2335557	1.0	No	WIRE 1#ASSY
132	2335558	1.0	No	WIRE 1#ASSY
133	2335559	1.0	No	WIRE 10#ASSY
134	2335560	1.0	No	WIRE 1#ASSY
135	2335561	1.0	No	WIRE 1#ASSY
136	2335562	1.0	No	WIRE 1#ASSY
137	2335563	1.0	No	WIRE 6#ASSY
138	2335564	1.0	No	WIRE 6#ASSY
139	2335565	1.0	No	WIRE 6#ASSY
140	2335566	1.0	No	WIRE 6#ASSY
141	2335567	1.0	No	WIRE 6#ASSY

Table 3-3 NGPDU ASSEMBLY3 (2380116 BOM, Rev 28) (Continued)

MARK	NUMBER	QTY	FRU	DESCRIPTION/NAME
142	2335568	1.0	No	WIRE 6#ASSY
143	2335569	1.0	No	WIRE 6#ASSY
144	2335570	1.0	No	WIRE 6#ASSY
145	2335571	1.0	No	WIRE 6#ASSY
146	2335573	1.0	No	WIRE 6#ASSY
147	2335572	1.0	No	WIRE 10#ASSY
150	2335574	1.0	No	WIRE 8#ASSY
151	2335575	1.0	No	WIRE 8#ASSY
152	2335576	1.0	No	WIRE 8#ASSY
153	2335577	1.0	No	WIRE 8#ASSY
154	2335578	1.0	No	WIRE 8#ASSY
155	2335579	1.0	No	WIRE 8#ASSY
156	2335580	1.0	No	WIRE 8#ASSY
157	2335581	1.0	No	WIRE 8#ASSY
158	2335582	1.0	No	WIRE 8#ASSY
159	2335583	1.0	No	WIRE 10#ASSY
160	2335584	1.0	No	WIRE 8#ASSY
161	2335585	1.0	No	WIRE 8#ASSY
162	2335586	1.0	No	WIRE 8#ASSY
163	2335587	1.0	No	WIRE 8#ASSY
164	2335588	1.0	No	WIRE 10#ASSY
165	2335589	1.0	No	WIRE 10#ASSY
166	2335590	1.0	No	WIRE 10#ASSY
167	2335591	1.0	No	WIRE 10#ASSY
168	2335592	1.0	No	WIRE 8#ASSY
169	2335593	1.0	No	WIRE 10#ASSY
170	2335594	1.0	No	WIRE 10#ASSY
171	2335595	1.0	No	WIRE 10#ASSY

Table 3-3 NGPDU ASSEMBLY3 (2380116 BOM, Rev 28) (Continued)

MARK	NUMBER	QTY	FRU	DESCRIPTION/NAME
172	2335596	1.0	No	WIRE 10#ASSY
173	2335597	1.0	No	WIRE 10#ASSY
174	2335598	1.0	No	WIRE 10#ASSY
175	2335599	1.0	No	WIRE 10#ASSY
176	2335601	1.0	No	WIRE 10#ASSY
183	2335605	1.0	No	WIRE 16#ASSY
184	2335606	1.0	No	WIRE 16#ASSY
185	2335607	1.0	No	WIRE 16#ASSY
187	2335609	1.0	No	WIRE 16#ASSY
188	2335610	1.0	No	WIRE 16#ASSY
189	2335612	1.0	No	WIRE 16#ASSY
190	2335613	1.0	No	WIRE 16#ASSY
191	2335614	1.0	No	WIRE 16#ASSY
195	2335618	1.0	No	WIRE 16#ASSY
196	2335619	1.0	No	WIRE 16#ASSY
197	2335620	1.0	No	WIRE 16#ASSY
200	2335622	1.0	No	WIRE 18#ASSY
201	2335623	1.0	No	WIRE 18#ASSY
202	2335624	1.0	No	WIRE 18#ASSY
204	5343367-2	1.0	No	NGPDU Signal Cable
205	2356908	1.0	No	WIRE 18#ASSY
206	2356909	1.0	No	WIRE 18#ASSY
207	2356910	1.0	No	WIRE 18#ASSY
208	2356911	1.0	No	WIRE 18#ASSY
209	2356912	1.0	No	WIRE 18#ASSY
210	2356913	1.0	No	WIRE 18#ASSY
211	2356914	1.0	No	WIRE 18#ASSY
213	2356916	1.0	No	WIRE 18#ASSY

Table 3-3 NGPDU ASSEMBLY3 (2380116 BOM, Rev 28) (Continued)

MARK	NUMBER	QTY	FRU	DESCRIPTION/NAME
215	2356918	1.0	No	WIRE 18#ASSY
216	2356919	1.0	No	WIRE 18#ASSY
217	2356920	1.0	No	WIRE 18#ASSY
218	2356921	1.0	No	WIRE 10#ASSY
219	2356922	1.0	No	WIRE 10#ASSY
220	2357126	1.0	No	WIRE 10#ASSY
221	2335625	1.0	No	WIRE 10#ASSY
222	2357131	1.0	No	WIRE 10#ASSY
223	2357132	1.0	No	WIRE 10#ASSY
224	2357129	1.0	No	WIRE 14#ASSY
227	2395645	6.0	No	A TERMINAL NUMBER LABEL
251	5406379	1.0	No	Thermal switch cable
326	1107-M5C020-14	6.0	No	Cross Recessed Pan Head Screw, M5-0.8 X 20mm Long, Grade 4.8 Steel, Zinc plate RoHS Fastener

Table 3-3 NGPDU ASSEMBLY3 (2380116 BOM, Rev 28) (Continued)

1.2 ABB Contactor Service kit for NGPDU (5340264)

FRU = YES

MARK	NUMBER	QTY	FRU	DESCRIPTION/NAME
7	5337228	1.0	Yes	ABB A110 Contactor
8	5324775	1.0	Yes	END BRAKET
16	U0201AC	20.0	Yes	CLAMP CV_100
17	U0203AC	20.0	Yes	CLAMP CV_200
1	2335602-2	1.0	No	KXG-1 to KSS-1 Cable
2	2335603-2	1.0	No	KXG-3 to KSS-3 Cable
3	2335604-2	1.0	No	KXG-5 to KSS-5 Cable
4	2335615-2	1.0	No	C4-1 to KXG-2 cable
5	2335616-2	1.0	No	C5-1 to KXG-4 Cable
6	2335617-2	1.0	No	C6-1 to KXG-6 cable
9	5321401	1.0	No	ABB Bracket
10	5342181-2	1.0	No	rail-L55
11	5327550-2	2.0	No	U0102AA Cross Recessed Pan Head Screw with Flange, M4-0.7 X 8mm Long, Grade 4.8 Steel, Zinc plate RoHS Fastener
12	2000-M5-03	4.0	No	Flat Washer, ISO7089, M5, Steel 200HV, Zinc Plated, RoHS Fastener
13	1107-M5C014-14	4.0	No	Cross Recessed Pan Head Screw, M5-0.8 X14mm Long, Grade 4.8 Steel, Zinc plate RoHS Fastener
14	1000-M6C020-02	2.0	No	Hexagon Socket Head Cap Screw, M6-1, X20mm Long, Grade 8.8 Steel, Black Oxide RoHS Fastener
15	5340264-1EN	1.0	No	NGPDU Series ABB Contactor Replacement Service Instruction
18	2335605	1.0	No	WIRE 16#ASSY
19	2335606	1.0	No	WIRE 16#ASSY
20	2335607	1.0	No	WIRE 16#ASSY
21	2356918	1.0	No	WIRE 16#ASSY

Table 3-4 ABB Contactor Service kit (5340264 BOM, Rev 2)